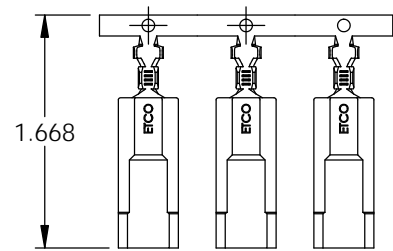
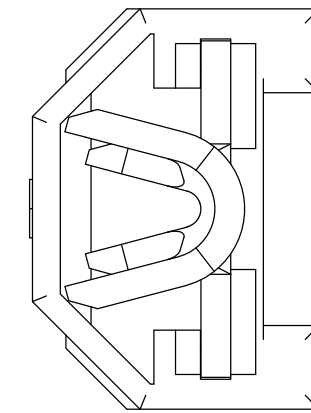
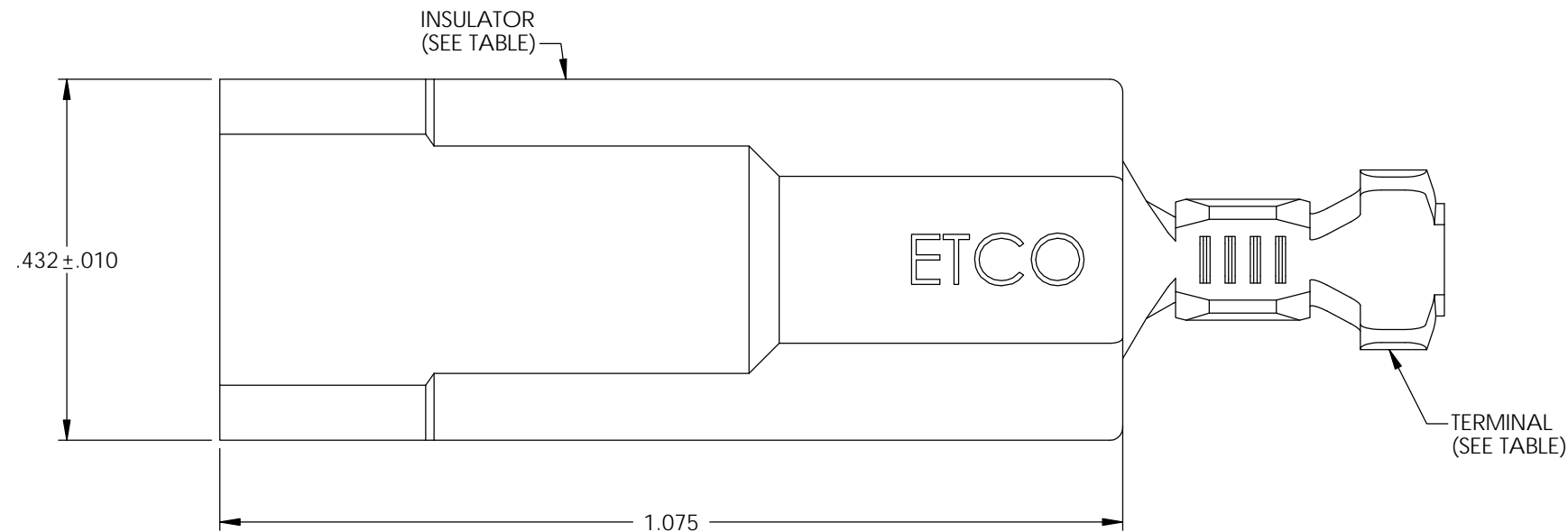
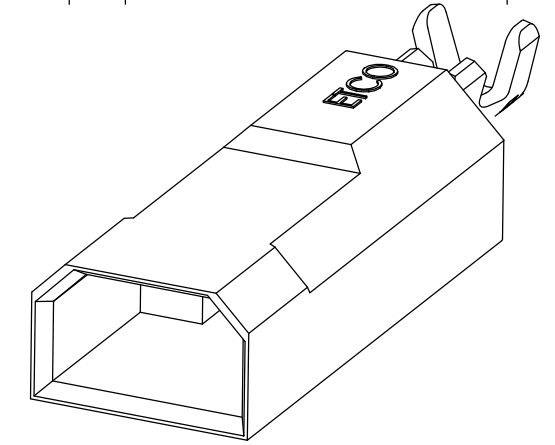
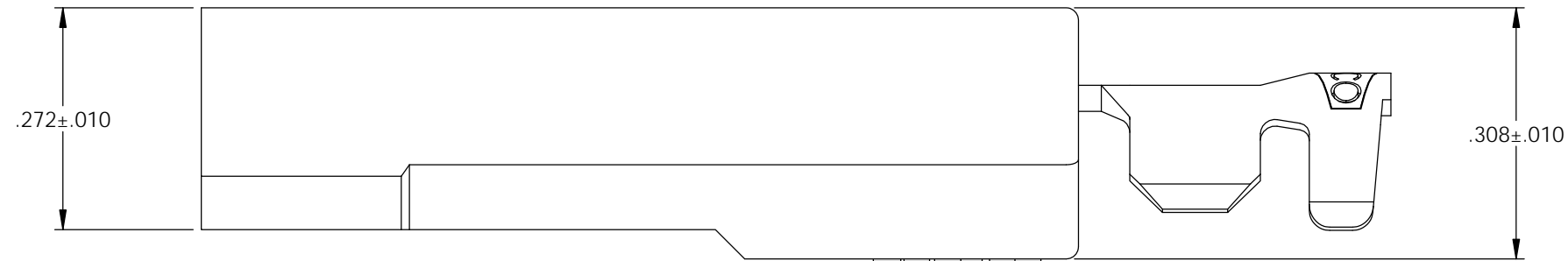


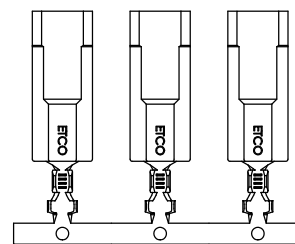
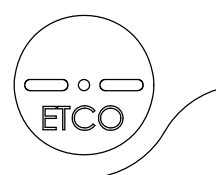
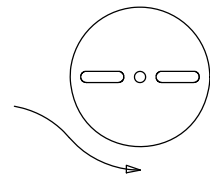
- NOTES:
 1. ACCEPTS A .250 X .032 FEMALE DISCONNECT.
 2. WIRE RANGE: SEE TABLE
 3. INSULATION RANGE: SEE TABLE
 4. VOLTAGE RATING: 1000 V MAX

P/C	DESCRIPTION	TERMINAL MAT'L & PLATING	INSULATOR MAT'L	WIRE RANGE	INSUL RANGE	INSULATOR ⁽⁸⁾ TEMP RATING	UL	cUL	
34000	PM227N-HB	BRASS	6/6 NYLON	20-18 AWG	Ø.070-.120	105 °C MAX	X	X	⑥
34010	PM227N-THB	PRE-TINNED BRASS	6/6 NYLON	20-18 AWG	Ø.070-.120	105 °C MAX	X	X	⑥
34020	PM227N-THB-BLK	PRE-TINNED BRASS	6/6 NYLON BLACK	20-18 AWG	Ø.070-.120	105 °C MAX	X	X	⑦
34040	PM228N-HB	BRASS	6/6 NYLON	16-14 AWG	Ø.115-.150	105 °C MAX	X	X	⑥
34050	PM228N-THB	PRE-TINNED BRASS	6/6 NYLON	16-14 AWG	Ø.115-.150	105 °C MAX	X	X	⑥
34080	PM229N-HB	BRASS	6/6 NYLON	12-10 AWG	Ø.150-.200	105 °C MAX	X	X	⑥
34090	PM229N-THB	PRE-TINNED BRASS	6/6 NYLON	12-10 AWG	Ø.150-.200	105 °C MAX	X	X	⑥

Rev.	Description of Change/ SCN#	Date
-	INITIAL RELEASE SCN# 101875	11/30/01
1	INSULATOR DIMENSIONS ADDED	4/2/02
2	SCN# 102045 SCJ	10-16-02
3	SCN# 140148 SCJ	3-23-07
4	SCN# 140360 JMR	5-09-08
5	SCN# 140374 JMR	5-28-08
6	SCN# 140506 JMR	8-07-09
7	ECR# 1859 SCJ	12/11/12
8	ECR# 1939 SCJ	1/21/13



DIRECTION EXITING TOOL
EARS UP, TO THE BACK



DIRECTION TOWARDS APPLICATOR
EARS UP, TO THE FRONT

UNCONTROLLED COPY

 THIRD ANGLE PROJECTION TOLERANCES UNLESS OTHERWISE SPECIFIED INCHES: .XX - ±.030 .XXX - ±.015 ANGLES: ±5°	TOOL NO. 0793	Title: 1/4" IN-LINE MALE TERMINAL ASSEMBLY	
		DO NOT SCALE DWG. Drawn By: C.O'REILLY Date: 9/21/01	Chk'd/App'd By: Scale: 5X Size: B
ETCO Incorporated Engineered Products 25 Bellows Street Warwick, RI 02888 Phone: (401) 467-2400 Fax: (401) 467-9230 www.ETCO.com		Dwg. No.: PM227N, PM228N, PM229N cust	