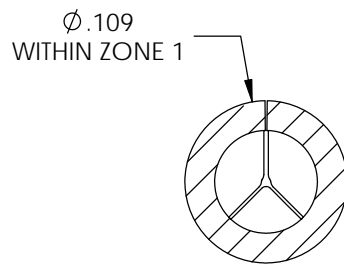
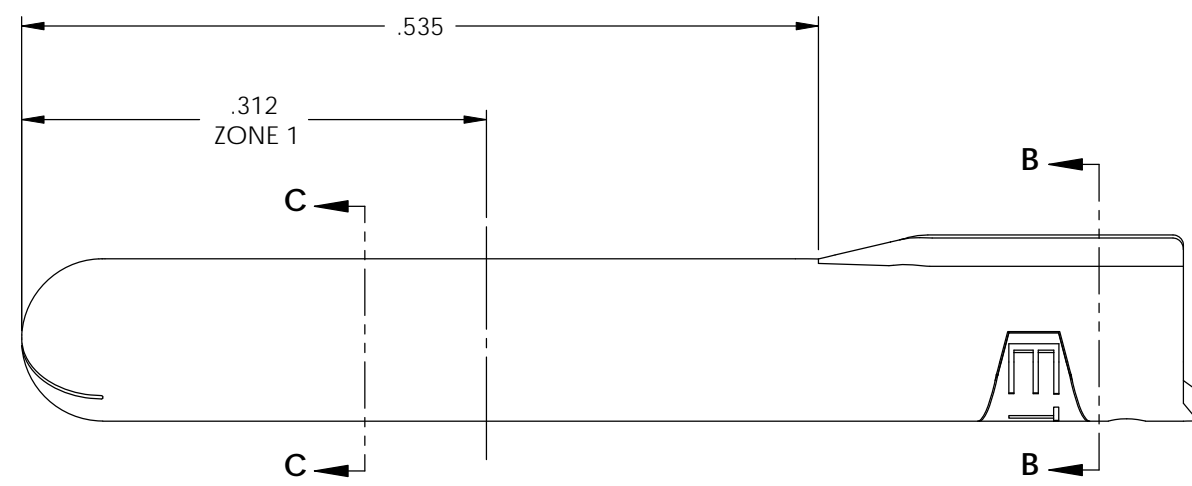
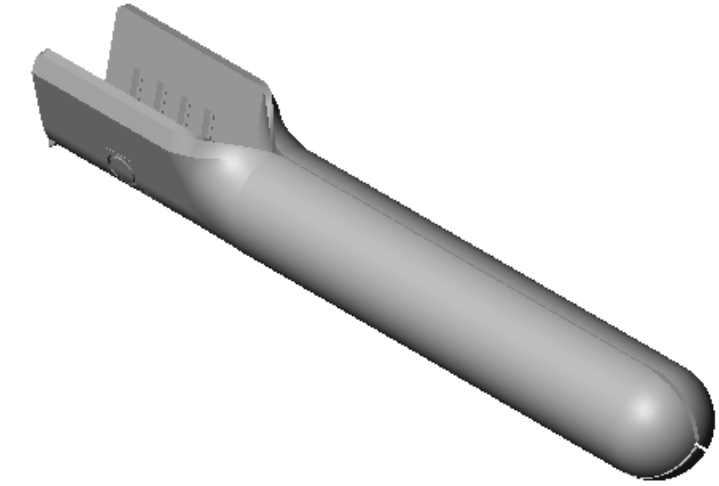
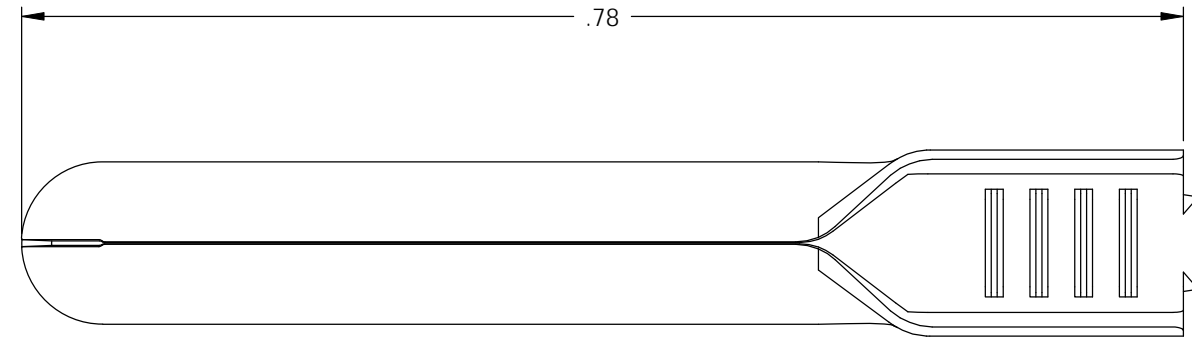
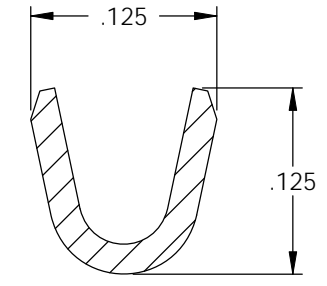


- NOTE:
- MAT'L: .020 THK., BRASS, #2 TEMPER (HALF HARD), PER ETCO METAL CODE NO. 00471.
  - MAT'L: .020 THK., PRE-TINNED BRASS, #2 TEMPER (HALF HARD), PER ETCO METAL CODE NO. 01520.
  - PARTS MAY BE COATED WITH A LIGHT FILM OF LUBRICATION USED IN THE MANUFACTURING PROCESS.
  - WIRE RANGE: 20-16 AWG.

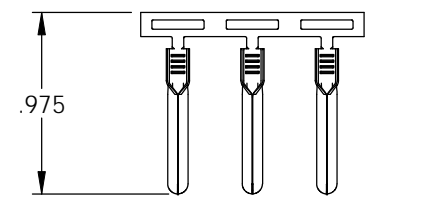
Rev.	Description of Change/ SCN#	Date
1	REDRAWN ON SOLIDWORKS NO CHANGES SCJ ORG.ENG.DWG.DATE: 9-15-92	1-30-03
2	ADDED P/C SCN#140162 SCJ	8-23-07



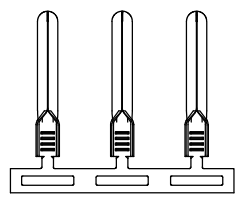
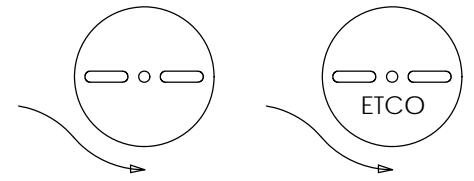
SECTION C-C  
SCALE 8 : 1



SECTION B-B  
SCALE 8 : 1



DIRECTION EXITING TOOL,  
EARS UP, CARRIER TO THE BACK



DIRECTION TOWARD APPLICATOR,  
EARS UP, CARRIER TO THE FRONT

# UNCONTROLLED COPY

<p>THIRD ANGLE PROJECTION TOLERANCES UNLESS OTHERWISE SPECIFIED INCHES: .XX - ±.030 .XXX - ±.015 ANGLES: ±5°</p>	<p>TOOL NO. <b>0171</b></p>	<p>Title: <b>PIN TERMINAL</b></p>		
		<p>DO NOT SCALE DWG.</p>	<p>Drawn By: S.JOHNSON</p>	<p>Date: 1-30-03</p>
<p>ETCO Incorporated Engineered Products 25 Bellows Street Warwick, RI 02888 Phone: (401) 467-2400 Fax: (401) 467-9230 www.ETCO.com</p>		<p>Chk'd/App'd By:</p>	<p>Scale: 8X</p>	<p>Size <b>B</b></p>
<p>Dwg. No.:</p>			<p><b>PN109 cust</b></p>	