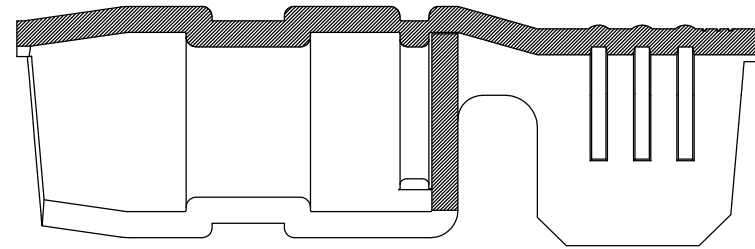
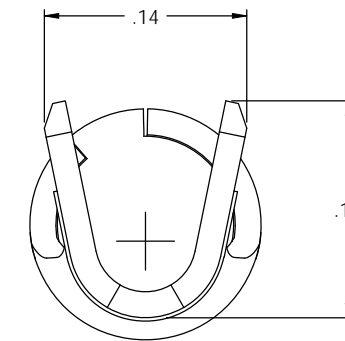
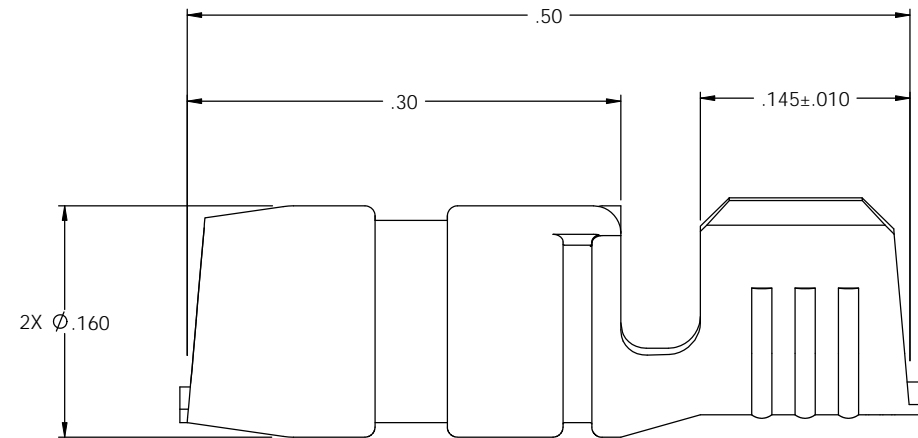
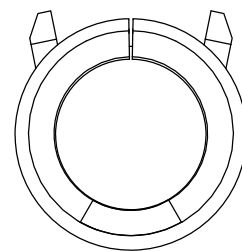
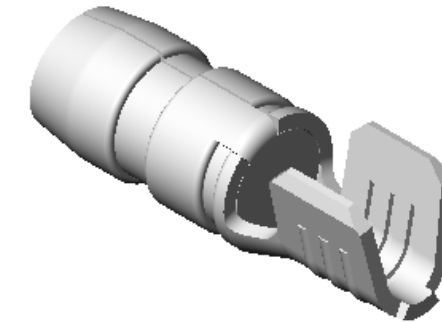
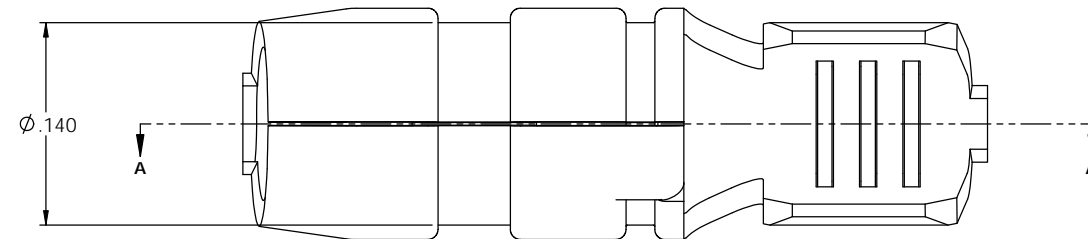


| PART CODE | DESCRIPTION | MATERIAL |
|-----------|-------------|----------|
| 09236     | PN156E-THB  | NOTE 1   |

| Rev. | Description of Change/ SCN# | Date    |
|------|-----------------------------|---------|
| -    | INITIAL RELEASED SCJ        | 6-30-04 |

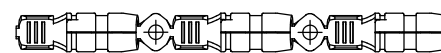


SECTION A-A

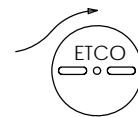


NOTES:

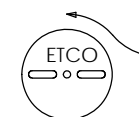
1. MATERIAL: .018 THICK C26000 PRETINNED BRASS  
1/2 HARD; PER ETCO METAL CODE 00211.
2. PARTS MAY BE COATED WITH A LIGHT FILM OF LUBRICATION  
USED IN THE MANUFACTURING PROCESS.
3. WIRE RANGE: #14-#18 AWG.



DIRECTION EXITING TOOL  
EARS UP, TO THE LEFT



DIRECTION TOWARDS APPLICATOR  
EARS UP, TO THE LEFT



UNCONTROLLED COPY

|  |                 |                                     |                                     |
|--|-----------------|-------------------------------------|-------------------------------------|
| <br>THIRD ANGLE PROJECTION<br>TOLERANCES UNLESS OTHERWISE SPECIFIED<br>INCHES: .XX - ±.010<br>XXX - ±.005<br>ANGLES: ±2°                               | TOOL NO.        | Title: Ø .160 DIAMETER PIN TERMINAL |                                     |
|  | 0913            | DO NOT SCALE DWG.                   | Drawn By: C. O'REILLY Date: 1/19/04 |
| <br>ETCO Incorporated<br>Engineered Products<br>25 Bellows Street<br>Warwick, R.I. 02888<br>Phone: (401)467-2400<br>FAX: (401)467-9230<br>www.ETCO.com | Chk'd/App'd By: | Scale: 12X                          | Size: C                             |
|  | Dwg. No.:       | PN156E                              |                                     |