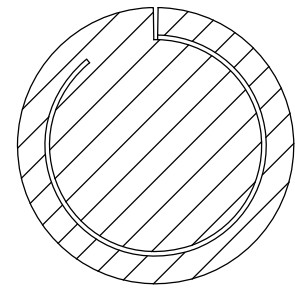
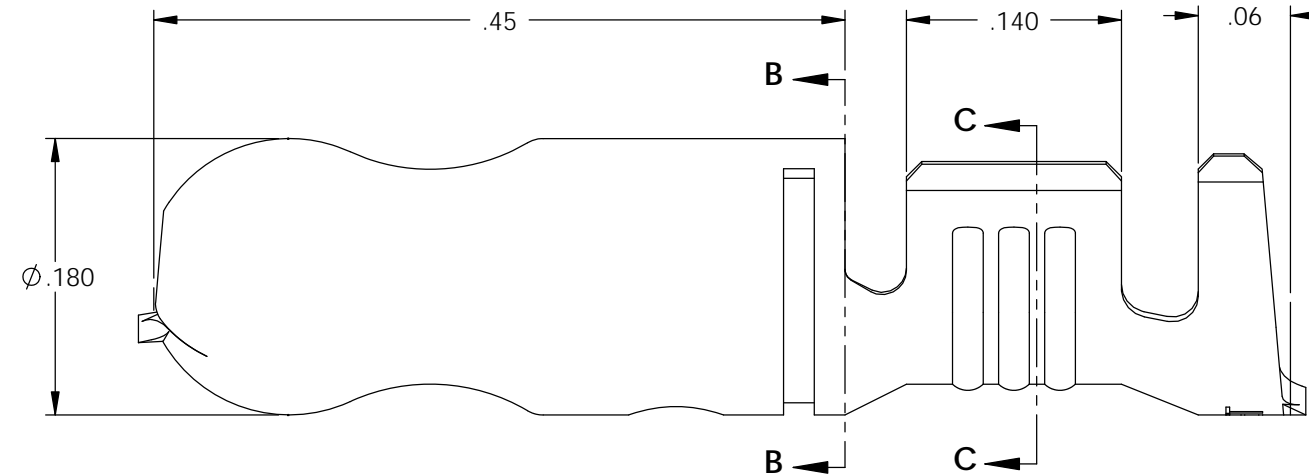
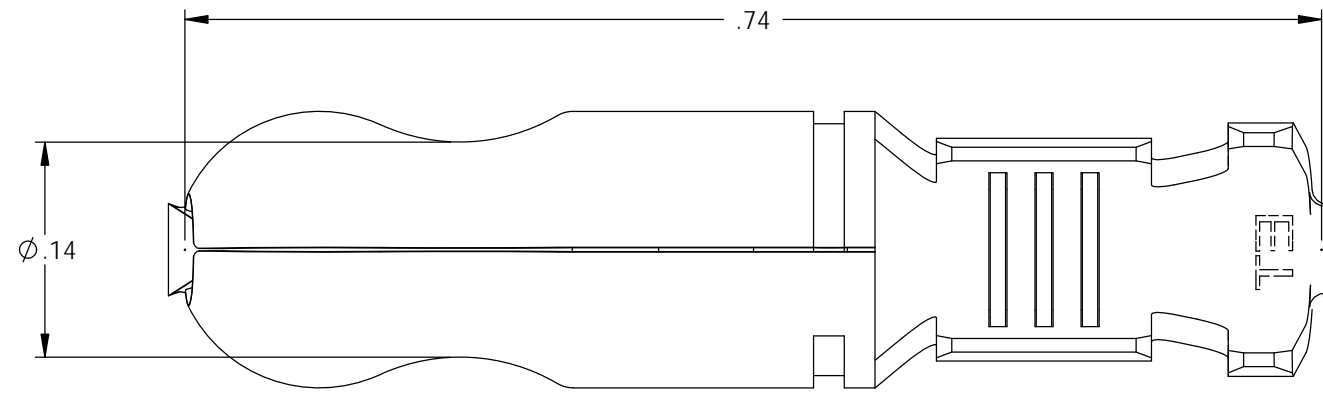
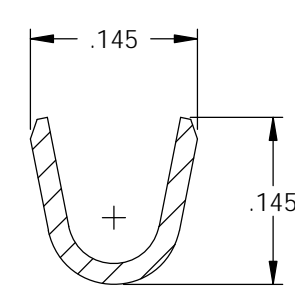
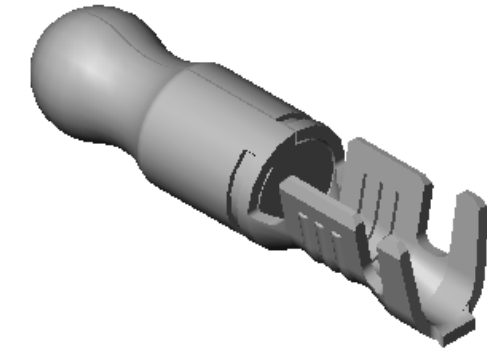
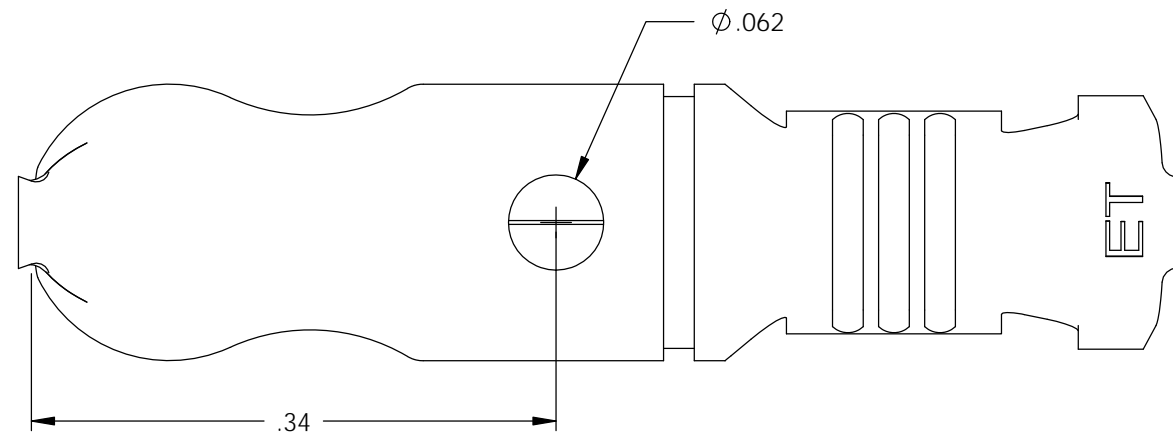


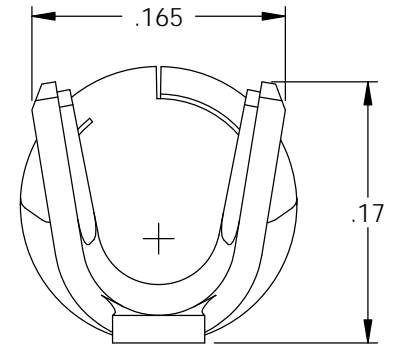
- NOTE:  
 1.) MAT'L: .018 THK., BRASS,  
 #2 TEMPER (HALF HARD),  
 PER ETCO METAL CODE NO. 00241.  
 2.) MAT'L: .018 THK., PRE-TINNED BRASS,  
 #2 TEMPER (HALF HARD),  
 PER ETCO METAL CODE NO. 01284.  
 3.) PARTS MAY BE COATED WITH A LIGHT  
 FILM OF LUBRICATION USED IN THE  
 MANUFACTURING PROCESS.  
 4.) WIRE RANGE: 18-14 AWG.  
 5.) INSUL RANGE:  $\phi$ .110-.050



SECTION B-B  
 SCALE 8 : 1

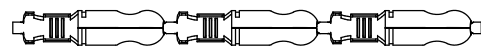


SECTION C-C



P/C	DESCRIPTION	MAT'L
09246	PN180E-1-THB	NOTE 2
09247	PN180E-1-HB	NOTE 1

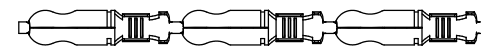
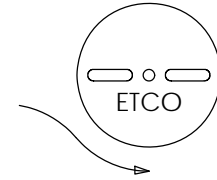
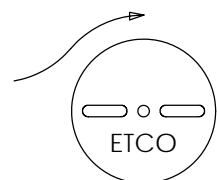
Rev.	Description of Change/ SCN#	Date
1	REDRAWN ON SOLIDWORKS NO CHANGES SCJ ORG.ENG.DWG.DATE: 2-11-93	2-4-03
2	SCN# 103000 SCJ	6-17-05
3	ADDED P/C SCN# 140162 SCJ	8-23-07
3	ECR# 4145 SCJ	3/24/16



DIRECTION EXITING TOOL,  
 EARS UP, TO THE LEFT



TWIST PARTS 180° SO EARS ARE  
 DOWN TO THE LEFT,  
 BEFORE WINDING



DIRECTION TOWARD APPLICATOR,  
 EARS UP, TO THE RIGHT

THIS PRINT IS THE PROPERTY OF ETCO INCORPORATED. NO PART OF THIS DESIGN MAY BE USED IN ANY WAY WITHOUT WRITTEN CONSENT FROM ETCO INCORPORATED.

# UNCONTROLLED COPY

 THIRD ANGLE PROJECTION TOLERANCES UNLESS OTHERWISE SPECIFIED INCHES: .XX - ±.030 .XXX - ±.015 ANGLES: ±5°	TOOL NO. <b>0176</b>	Title: <b>PIN TERMINAL WITH SEALING TAB</b>	
		DO NOT SCALE DWG.	Drawn By: S.JOHNSON Date: 2-4-03
ETCO Incorporated Engineered Products 25 Bellows Street Warwick, RI 02888 Phone: (401) 467-2400 Fax: (401) 467-9230 www.ETCO.com		Chk'd/App'd By:	Scale: <b>6X</b>
		Dwg. No.: <b>PN180E-1 cust</b>	