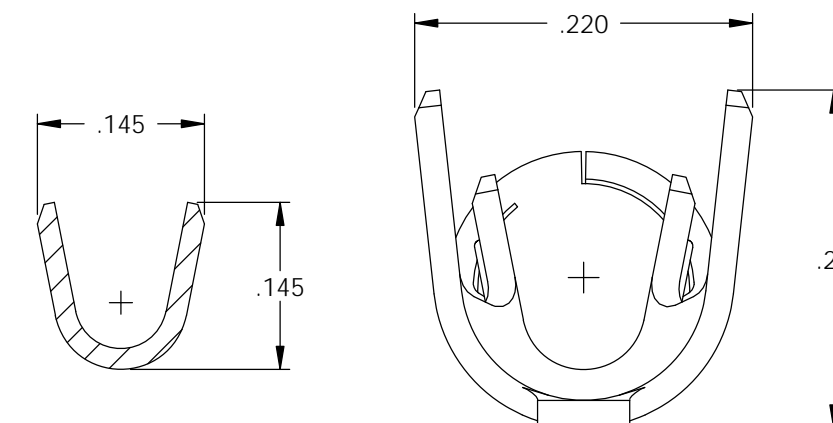
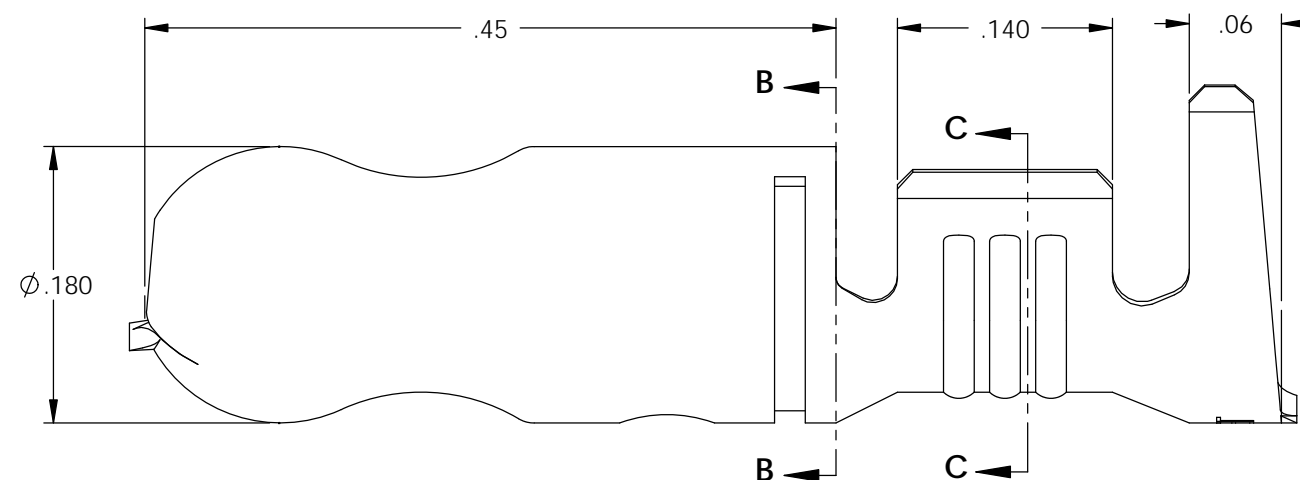
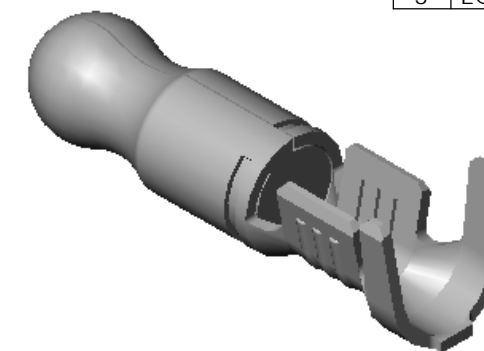
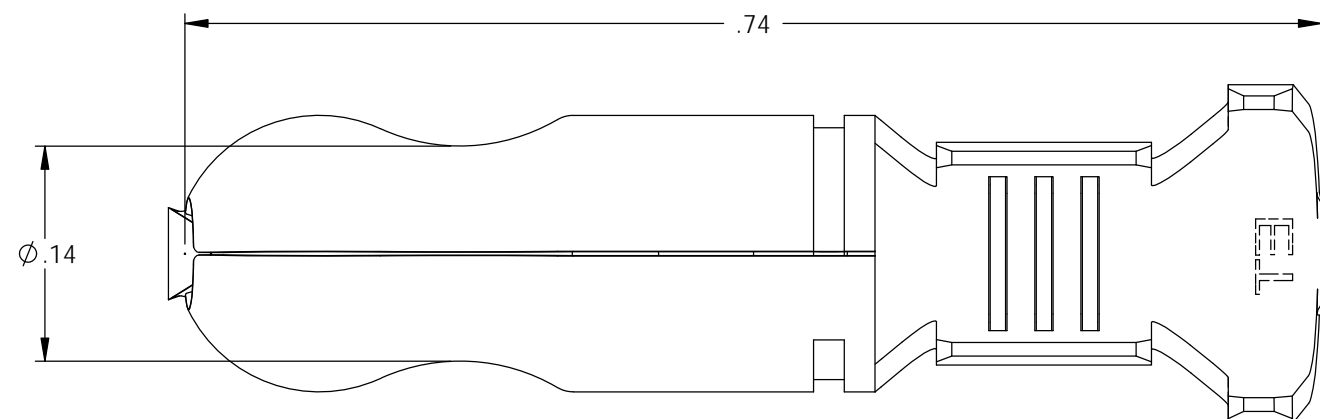


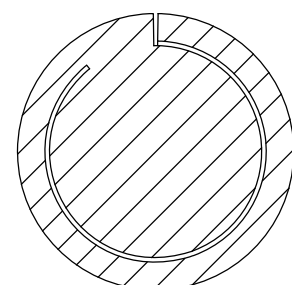
- NOTE:
 1.) MAT'L: .018 THK., BRASS,
 #2 TEMPER (HALF HARD),
 PER ETCO METAL CODE NO. 00241.
 2.) MAT'L: .018 THK., PRE-TINNED BRASS,
 #2 TEMPER (HALF HARD),
 PER ETCO METAL CODE NO. 01284.
 3.) PARTS MAY BE COATED WITH A LIGHT
 FILM OF LUBRICATION USED IN THE
 MANUFACTURING PROCESS.
 4.) WIRE RANGE: 18-14 AWG.
 5.) INSUL RANGE: ϕ .120-.175

| P/C | DESCRIPTION | MAT'L |
|-------|-------------|--------|
| 09244 | PN180E-HB | NOTE 1 |
| 09245 | PN180E-THB | NOTE 2 |

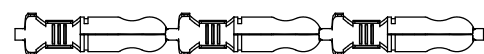
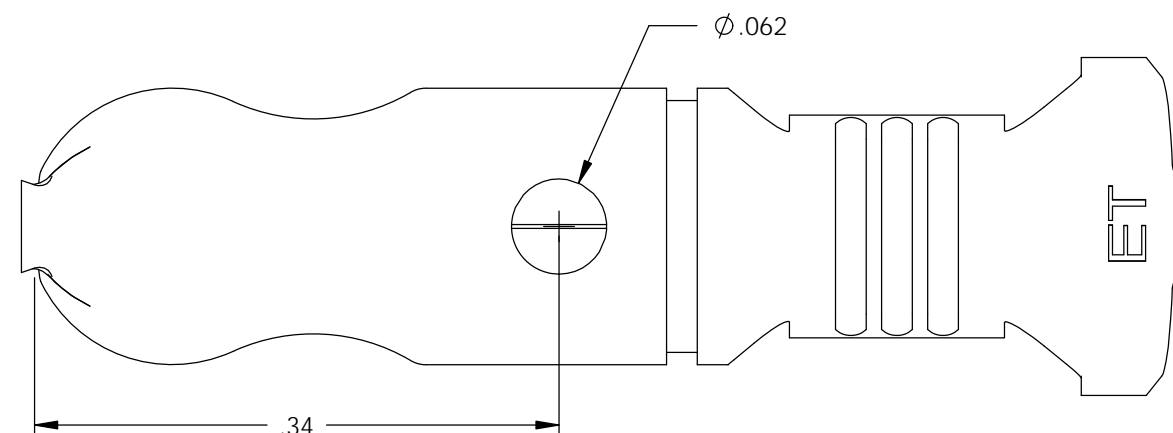
| Rev. | Description of Change/ SCN# | Date |
|------|---|---------|
| 1 | REDRAWN ON SOLIDWORKS NO CHANGES ORG.ENG.DWG.DATE: 2-11-93 SCJ | 2-4-03 |
| 2 | SCN# 103000 SCJ | 6-17-05 |
| 3 | ADDED P/C SCN#140162 SCJ | 8-23-07 |
| 3 | ECR# 4145 SCJ | 3/23/16 |



SECTION C-C



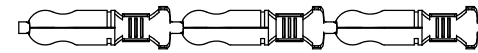
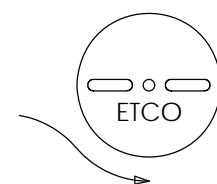
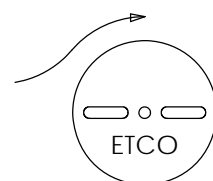
SECTION B-B
SCALE 8 : 1



DIRECTION EXITING TOOL,
EARS UP, TO THE LEFT



TWIST PARTS 180° SO EARS ARE
DOWN TO THE LEFT,
BEFORE WINDING



DIRECTION TOWARD APPLICATOR,
EARS UP, TO THE RIGHT

UNCONTROLLED COPY

THIRD ANGLE PROJECTION
 TOLERANCES UNLESS OTHERWISE SPECIFIED
 INCHES: .XX - $\pm .030$
 .XXX - $\pm .015$
 ANGLES: $\pm 5^\circ$

TOOL NO.
0176



Title: **PIN TERMINAL WITH SEALING TAB**

DO NOT SCALE DWG. Drawn By: S.JOHNSON Date: 2-4-03

Chk'd/App'd By: Scale: 6X Size B

Dwg. No.: **PN180E cust**