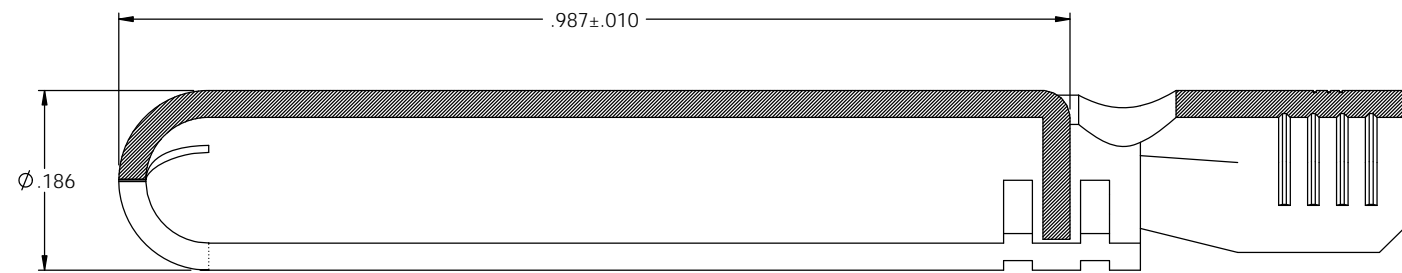
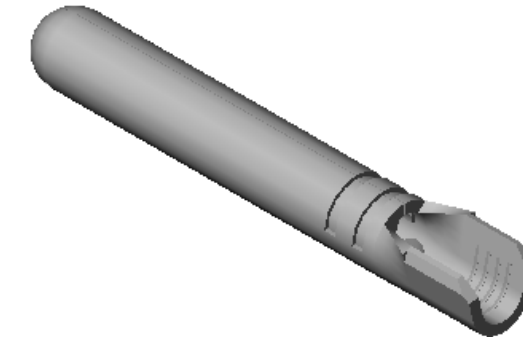
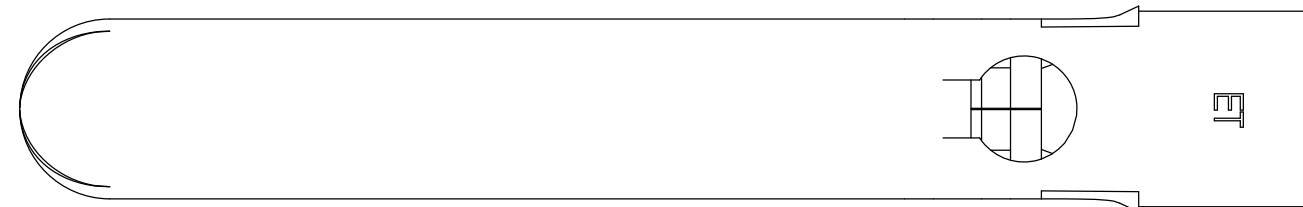


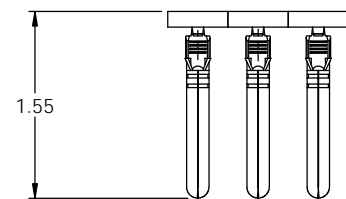
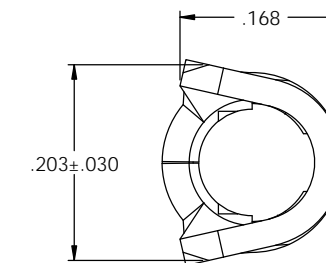
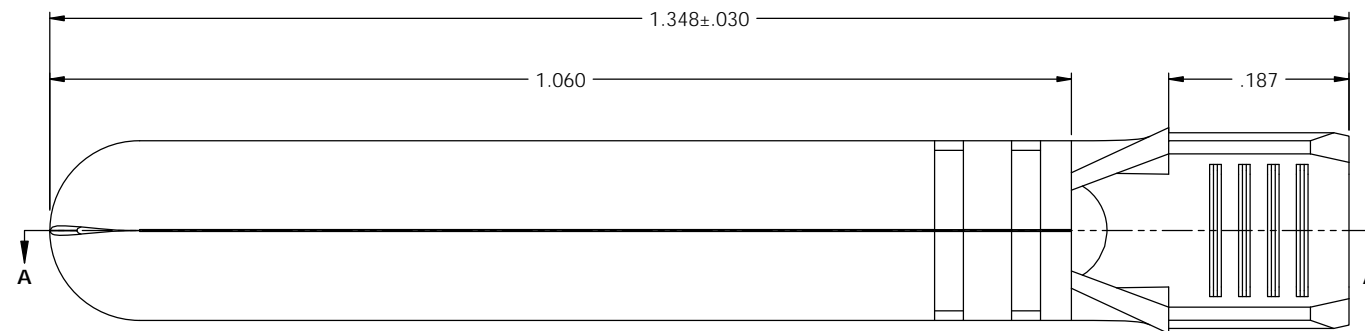
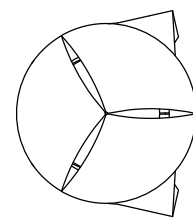
NOTE:
 1.) MAT'L: .028 THK., BRASS,
 #2 TEMPER, ANNEALED TO TEMPER,
 PER ETCO METAL CODE NO. 00112.
 2.) MAT'L: .028 THK., PRE-TINNED BRASS,
 #2 TEMPER, ANNEALED TO TEMPER,
 PER ETCO METAL CODE NO. 00129.
 3.) WIRE RANGE: #14-18 AWG.

P/C	DESCRIPTION ③	MAT'L	④
09264	PN187-C-HB	NOTE 1	X
09298	PN187-C-THB	NOTE 2	X

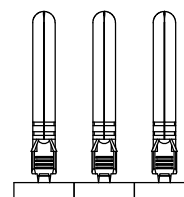
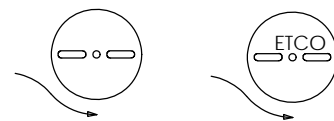
Rev.	Description of Change/ SCN#	Date
1	TRANSFER FROM CP TO EP	12-13-04
2	SCN# 102918 SCJ	4-4-05
3	ECR# 816 SCJ	11-1-11



SECTION A-A
SCALE 8 : 1



DIRECTION EXITING TOOL
EARS UP, TO THE BACK



DIRECTION TOWARDS APPLICATOR
EARS UP, TO THE FRONT

UNCONTROLLED COPY

 THIRD ANGLE PROJECTION	TOOL NO.	Title: GROUND PIN		
	0887	DO NOT SCALE DWG.	Drawn By: C. O'REILLY	Date: 8/21/03
TOLERANCES UNLESS OTHERWISE SPECIFIED INCHES: XX - ±.030 XXX - ±.015 ANGLES: ±5°	 ETCO	ETCO Incorporated Engineered Products 25 Bellows Street Warwick, RI 02888 Phone: (401) 467-2400 Fax: (401) 467-9230 www.ETCO.com	Chk'd/App'd By:	Scale: 8X Size: C
Dwg. No.: PN187				