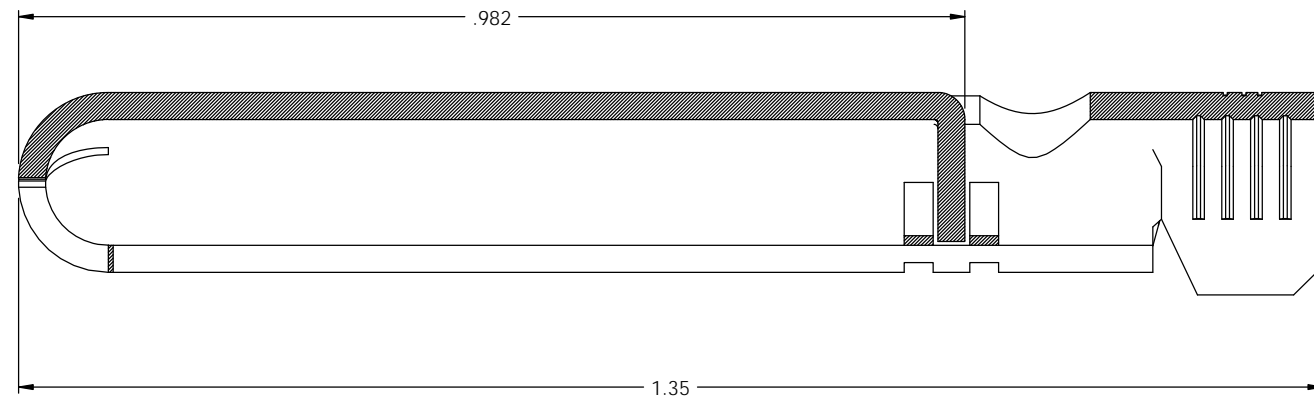
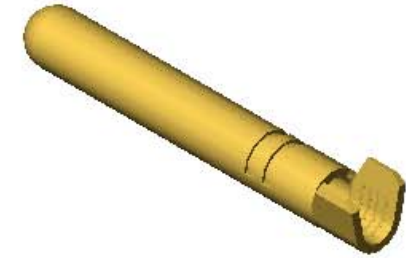
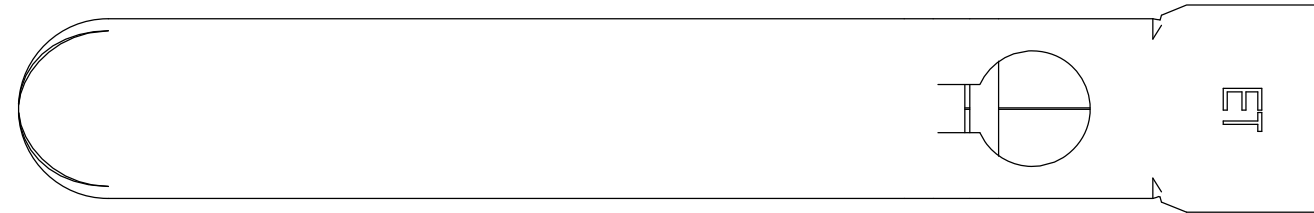


NOTES:

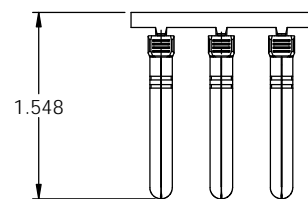
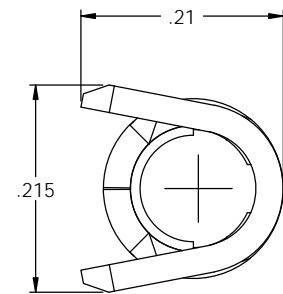
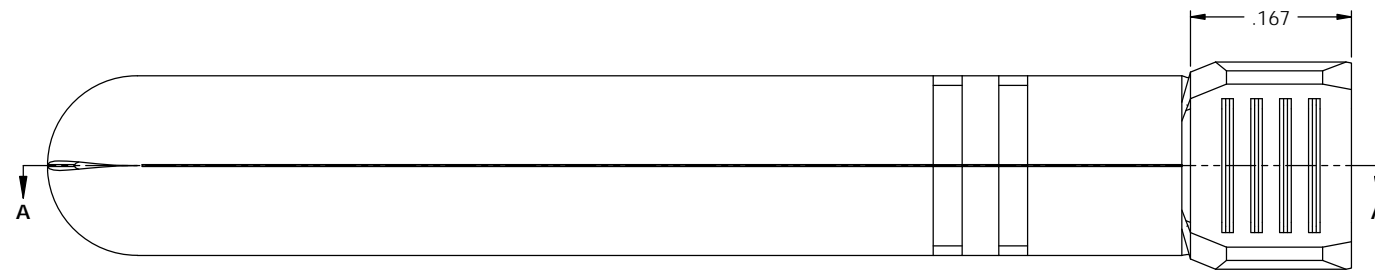
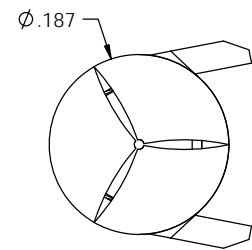
1. MATERIAL: .028 THICK C26000 BRASS; 1/2 HARD
ANNEALED TO TEMPER; PER ETCO METAL CODE 00112.
2. MATERIAL: .028 THICK PRE-TINNED C26000 BRASS; 1/2 HARD
ANNEALED TO TEMPER; PER ETCO METAL CODE 00129.
3. FOR WINDING AND REWINDING INSTRUCTIONS SEE PR-3-07.
4. WIRE RANGE: 10 - 12 AWG

P/C	DESCRIPTION (2)	MAT'L	REWIND
14185	PN1874-C-HB	NOTE 1	NO
14197	PN1874-CRA-HB	NOTE 1	YES

Rev.	Description of Change/ SCN#	Date
1	TRANSFERED FROM CP SCJ	8-27-08
2	ECR# 816 SCJ	11-1-11



SECTION A-A
SCALE 8 : 1



DIRECTION EXITING TOOL
EARS UP, TO THE BACK
SEE NOTE 3

UNCONTROLLED COPY

 THIRD ANGLE PROJECTION	TOOL NO.	Title: GROUND PIN	
	0887	DO NOT SCALE DWG.	Drawn By: S.JOHNSON Date: 8-27-08
TOLERANCES UNLESS OTHERWISE SPECIFIED INCHES: XX - ±.030 XXX - ±.015 ANGLES: ±5°	 ETCO Incorporated Engineered Products 25 Bellows Street Warwick, RI 02888 Phone: (401) 467-2400 Fax: (401) 467-9230 www.ETCO.com	Chk'd/App'd By:	Scale: 8X Size: C
		Dwg. No.:	PN1874 cust