
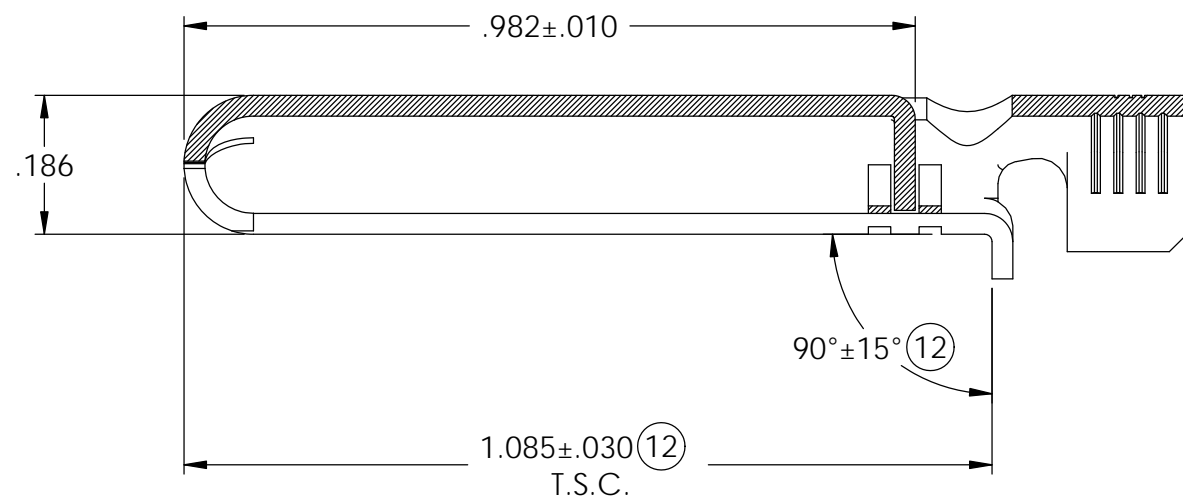
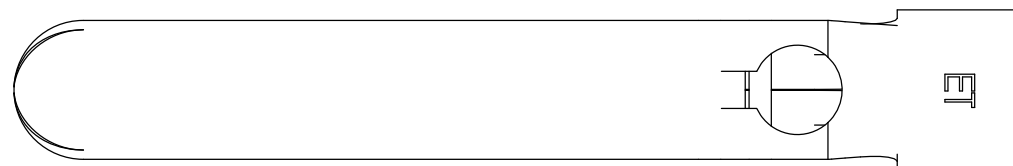


NOTES:

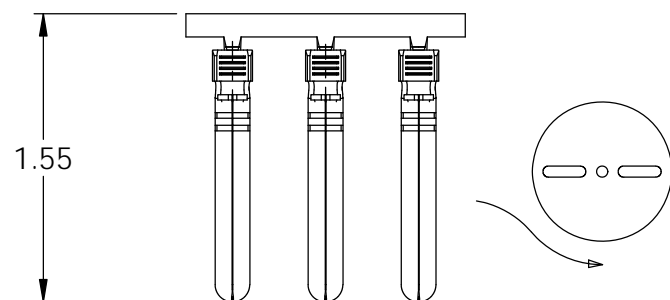
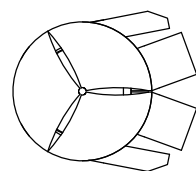
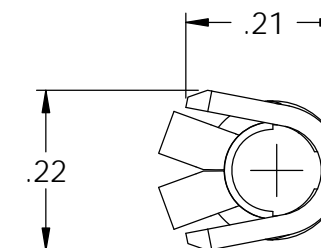
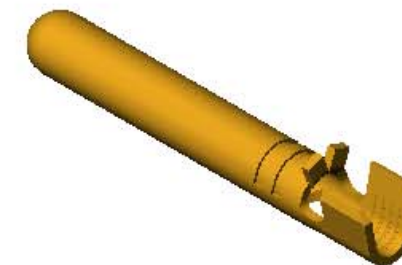
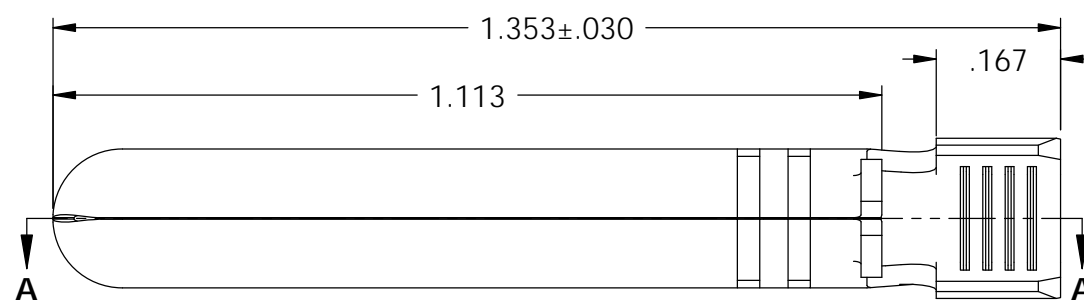
1. MATERIAL: .028 THICK C26000 BRASS; 1/2 HARD ANNEALED TO TEMPER; PER ETCO METAL CODE 00112.
2. MATERIAL: .028 THICK PRE-TINNED C26000 BRASS; 1/2 HARD ANNEALED TO TEMPER; PER ETCO METAL CODE 00129.
3. FOR REWIND INSTRUCTIONS SEE PR-3-07.
4. WIRE RANGE: #10-#14 AWG.

P/C	DESCRIPTION (13)	MAT'L	REWIND	
09258	PN187AW-CRA-HB	NOTE 1	YES	X
09259	PN187AW-C-HB	NOTE 1	NO	X

Rev.	Description of Change/ SCN#	Date
11	COMPLETED P/C LIST SCJ	7-28-08
12	ECR #780 JMR	8-19-11
13	ECR# 816 SCJ	11-1-11





SECTION A-A



DIRECTION EXITING TOOL  
EARS UP, TO THE BACK

THIS PRINT IS THE PROPERTY OF ETCO INCORPORATED. NO PART OF THIS DESIGN MAY BE USED IN ANY WAY WITHOUT WRITTEN CONSENT FROM ETCO INCORPORATED.

# UNCONTROLLED COPY

 THIRD ANGLE PROJECTION TOLERANCES UNLESS OTHERWISE SPECIFIED INCHES: .XX - ±.030 .XXX - ±.015 ANGLES: ±5°	TOOL NO. <b>0887</b>	Title: <b>GROUND PIN</b>		
		DO NOT SCALE DWG.	Drawn By: J. DeSio	Date: 8-16-07
ETCO Incorporated Engineered Products 25 Bellows Street Warwick, RI 02888 Phone: (401) 467-2400 Fax: (401) 467-9230 www.ETCO.com		Chk'd/App'd By:	Scale: 4X	Size B
		Dwg. No.: <b>PN187AW cust</b>		