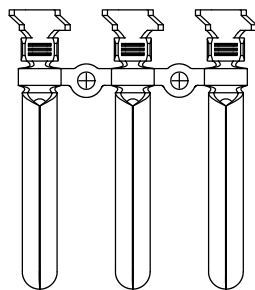
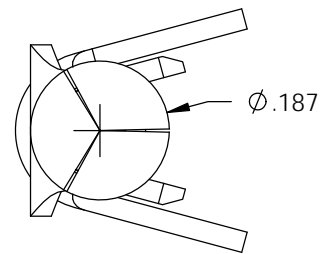
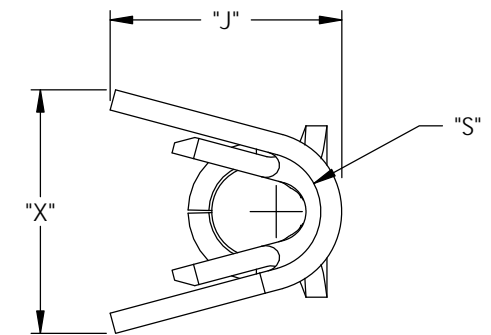
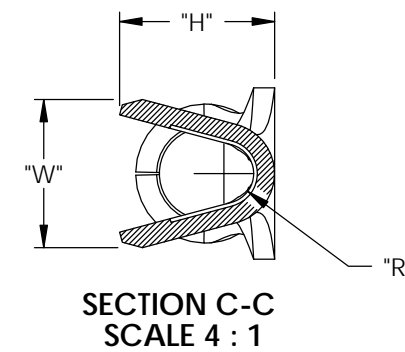
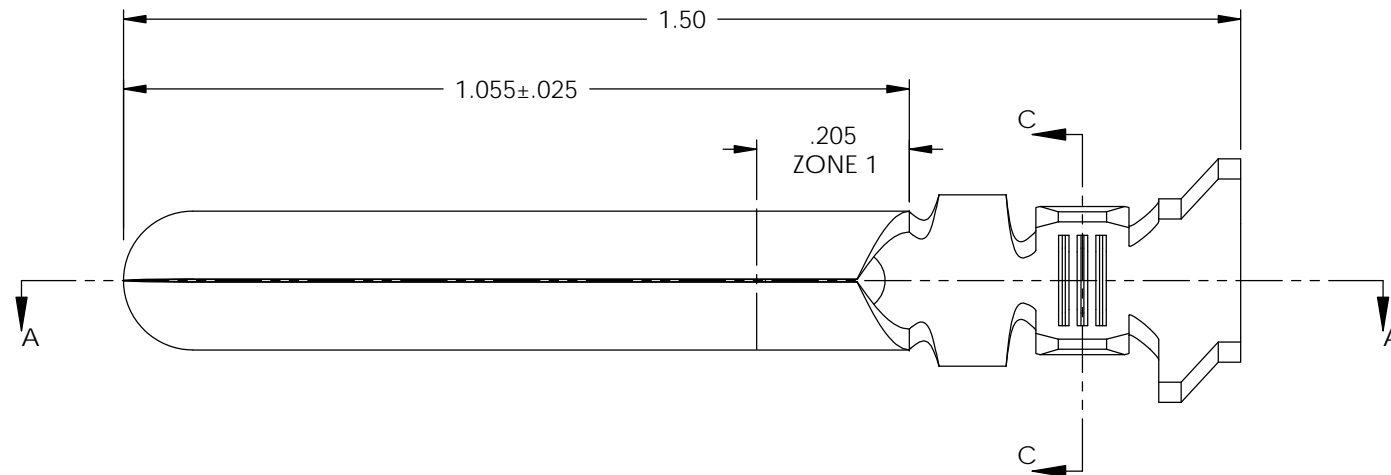
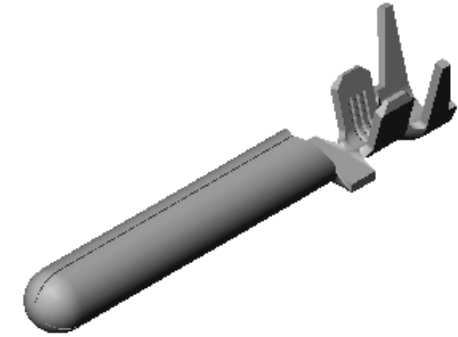
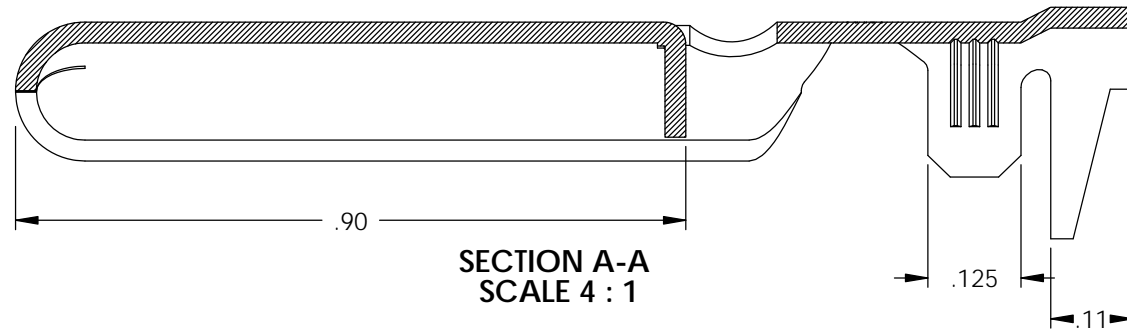
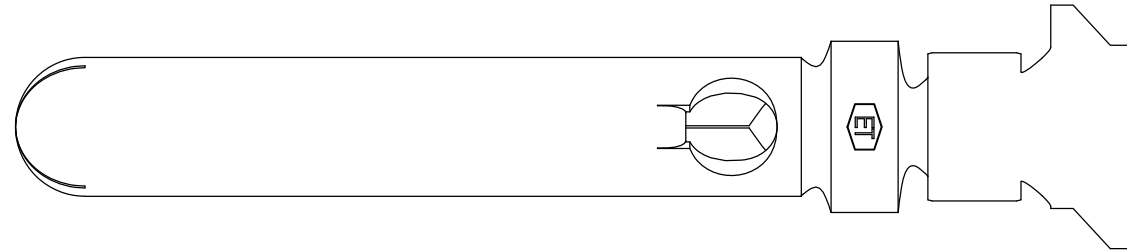


NOTES:

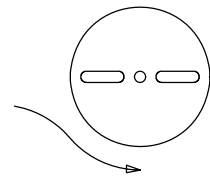
1. MATERIAL: .028 THICK C26000 BRASS; 1/2 HARD, ANNEALED TO TEMPER PER ETCO METAL CODE 00233.
2. MATERIAL: .028 THICK PRETINNED C26000 BRASS; 1/2 HARD, ANNEALED TO TEMPER PER ETCO METAL CODE 00251.
3. PARTS MAY BE COATED WITH A LIGHT FILM OF LUBRICATION USED IN THE MANUFACTURING PROCESS.

| P/C   | DESCRIPTION ①   | MAT'L  | WIRE RANGE | MAX INSUL Ø | "H"  | "J" ±.020 | "R"  | "S"  | "W" ±.030 | "X" ±.030 |
|-------|-----------------|--------|------------|-------------|------|-----------|------|------|-----------|-----------|
| 09181 | PN187GP13-C-HB  | NOTE 1 | #18-#20    | .113        | .137 | .241      | .020 | .057 | .130      | .256      |
| 09182 | PN187GP13-C-THB | NOTE 2 |            |             |      |           |      |      |           |           |
| 09183 | PN187GP14-C-HB  | NOTE 1 | #16-#18    | .124        | .165 | .258      | .028 | .062 | .154      | .272      |
| 09184 | PN187GP14-C-THB | NOTE 2 |            |             |      |           |      |      |           |           |
| 09185 | PN187GP15-C-HB  | NOTE 1 | #14-#16    | .138        | .188 | .258      | .032 | .062 | .176      | .272      |
| 09186 | PN187GP15-C-THB | NOTE 2 |            |             |      |           |      |      |           |           |
| 09187 | PN187GP16-C-HB  | NOTE 1 | #12-#14    | .158        | .208 | .311      | .040 | .079 | .199      | 0.327     |
| 09188 | PN187GP16-C-THB | NOTE 2 |            |             |      |           |      |      |           |           |

| Rev. | Description of Change/ SCN# | Date     |
|------|-----------------------------|----------|
| -    | INITIAL RELEASE JMR         | 4-10-08  |
| 1    | ECR# 816 SCJ                | 10-25-11 |



DIRECTION EXITING TOOL EARS UP, TO THE BACK



THIS PRINT IS THE PROPERTY OF ETCO INCORPORATED. NO PART OF THIS DESIGN MAY BE USED IN ANY WAY WITHOUT WRITTEN CONSENT FROM ETCO INCORPORATED.

# UNCONTROLLED COPY

|  |                         |   |                             |                     |
|--|-------------------------|---|-----------------------------|---------------------|
| <p>THIRD ANGLE PROJECTION<br/>TOLERANCES UNLESS OTHERWISE SPECIFIED<br/>INCHES: .XX - ±.030<br/>.XXX - ±.015<br/>ANGLES: ±5°</p>                   | TOOL NO.<br><b>0916</b> | Title:<br><b>GROUND PIN</b>                       |                             |                     |
|  |                         | DO NOT SCALE DWG.                                 | Drawn By: <b>J. RAMALHO</b> | Date: <b>4/8/08</b> |
| ETCO Incorporated<br>Engineered Products<br>25 Bellows Street<br>Warwick, RI 02888<br>Phone: (401) 467-2400<br>Fax: (401) 467-9230<br>www.ETCO.com |                         | Chk'd/App'd By:                                   | Scale:<br><b>4X</b>         | Size<br><b>B</b>    |
|  |                         | Dwg. No.:<br><b>PN187GP13 thru PN187GP16 cust</b> |                             |                     |