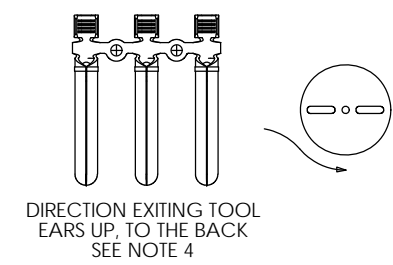
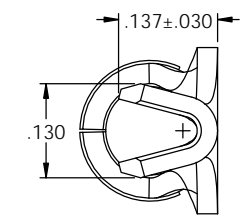
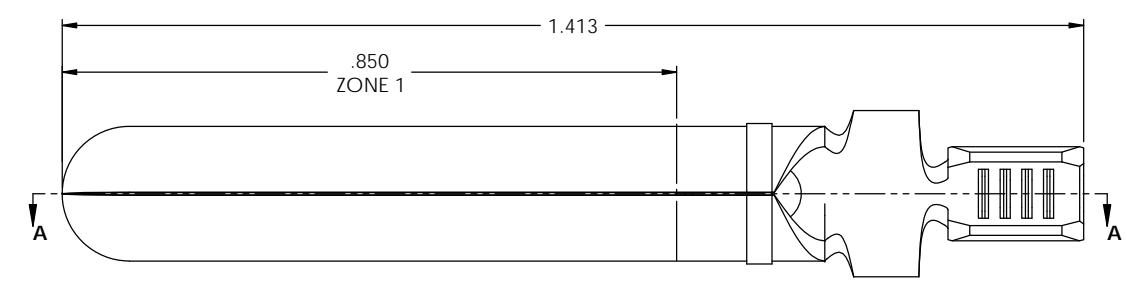
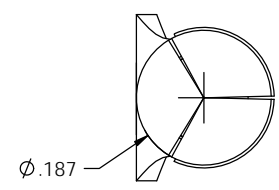
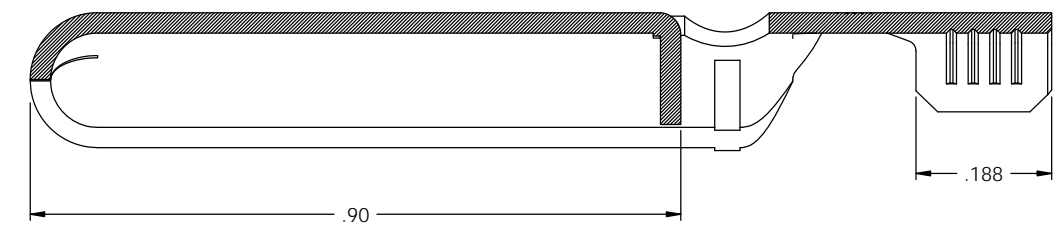
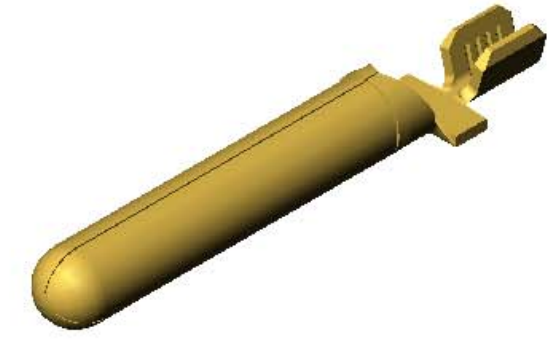
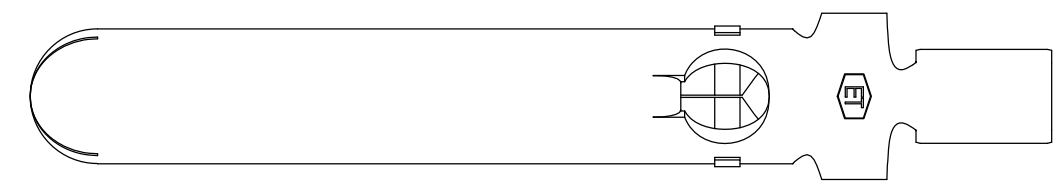


- NOTES:  
 1. MATERIAL: .028 THICK C26000 BRASS;  
 1/2 HARD, PER ETCO METAL CODE 00224.  
 2. PARTS MAY BE COATED WITH A LIGHT FILM OF LUBRICATION USED IN  
 THE MANUFACTURING PROCESS.  
 3. FOR REWIND INSTRUCTIONS SEE PR-3-07.  
 4. WIRE RANGE: 18-20 AWG.

P/C	DESCRIPTION ①	MAT'L	REWIND
09211	PN187GP5-CRA-HB	NOTE 1	YES
09215	PN187GP5-C-HB	NOTE 1	NO

Rev.	Description of Change/ SCN#	Date
-	INITIAL RELEASE	4-3-06
1	ECR#816	10-26-11



**UNCONTROLLED COPY**

THIRD ANGLE PROJECTION TOLERANCES UNLESS OTHERWISE SPECIFIED INCHES: .XX - ±.030 .XXX - ±.015 ANGLES: ±5°	TOOL NO. <b>0916</b>	Title: <b>GBBA GROUND PIN</b>	
	DO NOT SCALE DWG.	Drawn By: <b>C.O'REILLY</b>	Date: <b>4-3-06</b>
	ETCO Incorporated Engineered Products 25 Bellows Street Warwick, RI 02888 Phone: (401) 467-2400 Fax: (401) 467-9230 www.ETCO.com	Chk'd/App'd By:	Scale: <b>6X</b> Size: <b>C</b>
		Dwg. No.:	<b>PN187GP5</b>