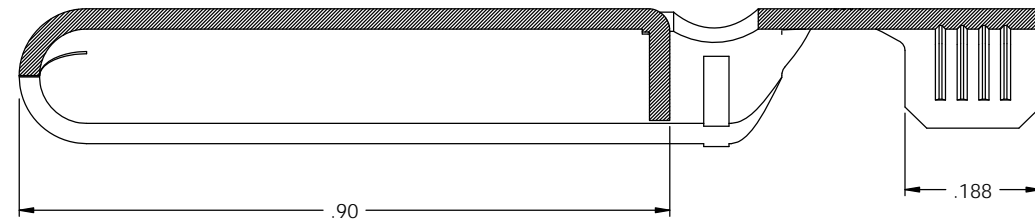


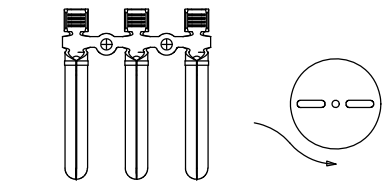
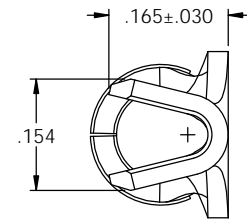
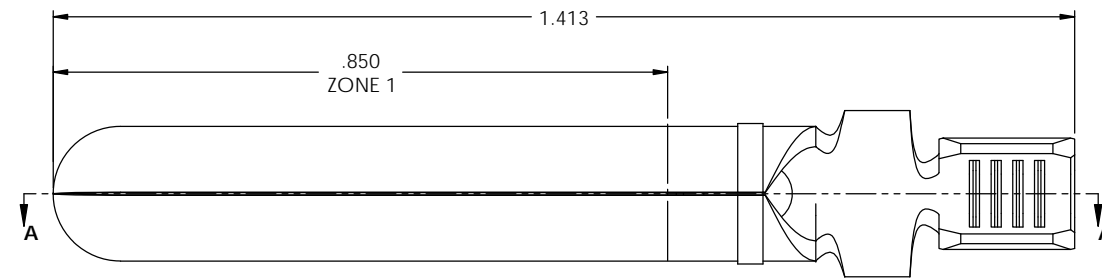
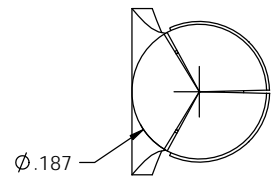
- NOTES:
 1. MATERIAL: .028 THICK C26000 BRASS;
 1/2 HARD, PER ETCO METAL CODE 00224.
 2. PARTS MAY BE COATED WITH A LIGHT FILM OF LUBRICATION USED IN
 THE MANUFACTURING PROCESS.
 3. FOR REWIND INSTRUCTIONS SEE PR-3-07.
 4. WIRE RANGE: 16-18 AWG.

P/C	DESCRIPTION ①	MAT'L	REWIND
09212	PN187GP6-CRA-HB	NOTE 1	YES
09216	PN187GP6-C-HB	NOTE 1	NO

Rev.	Description of Change/ SCN#	Date
-	INITIAL RELEASE SCJ	4-3-06
1	ECR# 816 SCJ	10-26-11



SECTION A-A



DIRECTION EXITING TOOL
 EARS UP, TO THE BACK
 SEE NOTE 4

UNCONTROLLED COPY

 THIRD ANGLE PROJECTION TOLERANCES UNLESS OTHERWISE SPECIFIED INCHES: XX - ±.030 XXX - ±.015 ANGLES: ±5°	TOOL NO. 0916	Title: GBBA GROUND PIN	
	DO NOT SCALE DWG.	Drawn By: C.O'REILLY	Date: 4-3-06
 ETCO Incorporated Engineered Products 25 Bellows Street Warwick, RI 02888 Phone: (401) 467-2400 Fax: (401) 467-9230 www.ETCO.com	Chk'd/App'd By:	Scale: 6X	Size: C
Dwg. No.: PN187GP6			