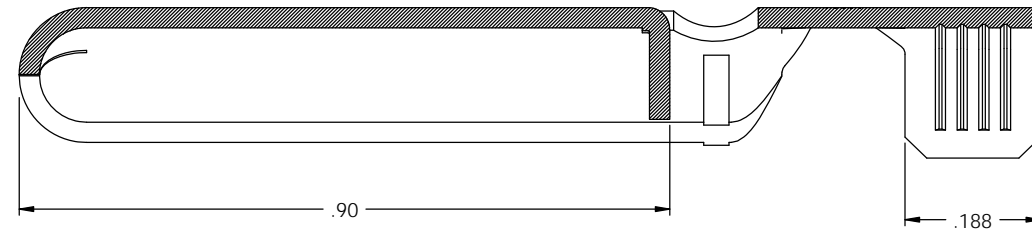
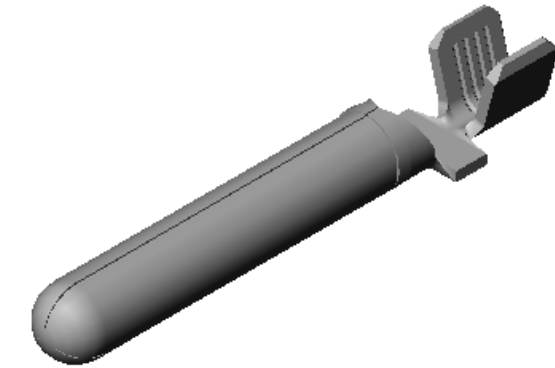
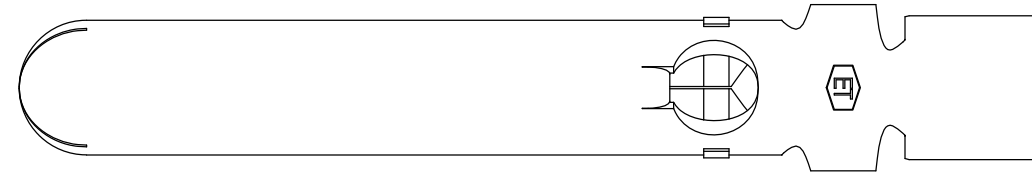


NOTES:

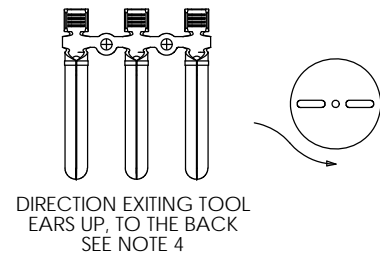
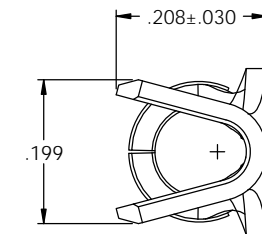
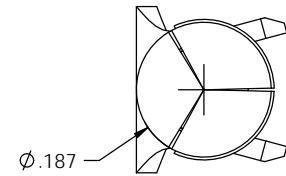
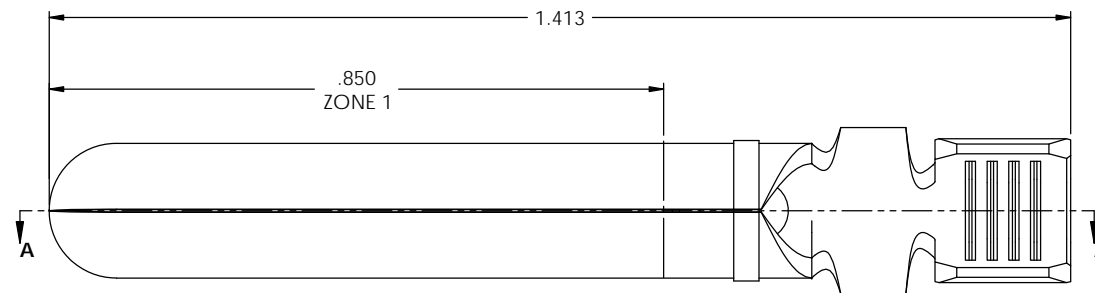
1. MATERIAL: .028 THICK C26000 BRASS;
1/2 HARD, PER ETCO METAL CODE 00224.
2. MATERIAL: .028 THICK C26000 PRE-TINNED BRASS;
1/2 HARD, PER ETCO METAL CODE 00345.
3. PARTS MAY BE COATED WITH A LIGHT FILM OF LUBRICATION USED IN THE MANUFACTURING PROCESS.
4. FOR REWIND INSTRUCTIONS SEE PR-3-07.
5. WIRE RANGE: 14-12 AWG.

P/C	DESCRIPTION ①	MAT'L	REWIND
09214	PN187GP8-CRA-HB	NOTE 1	YES
09218	PN187GP8-C-HB	NOTE 1	NO
09223	PN187GP8-C-THB	NOTE 2	NO

Rev.	Description of Change/ SCN#	Date
-	INITIAL RELEASE SCJ	4-3-06
1	ECR# 816 SCJ	10-26-11



SECTION A-A



UNCONTROLLED COPY

THIRD ANGLE PROJECTION TOLERANCES UNLESS OTHERWISE SPECIFIED INCHES: XX - ±.030 XXX - ±.015 ANGLES: ±5°	TOOL NO. 0916	Title: GBBA GROUND PIN	
	DO NOT SCALE DWG.	Drawn By: C.O'REILLY	Date: 4-3-06
	ETCO Incorporated Engineered Products 25 Bellows Street Warwick, RI 02888 Phone: (401) 467-2400 Fax: (401) 467-9230 www.ETCO.com	Chk'd/App'd By:	Scale: 6X Size: C
		Dwg. No.:	PN187GP8