
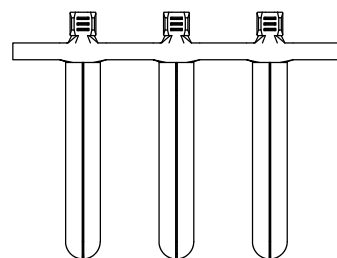
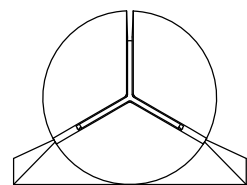
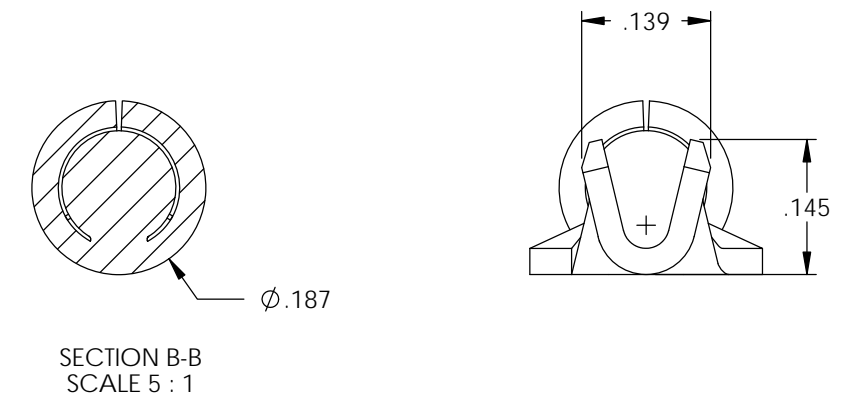
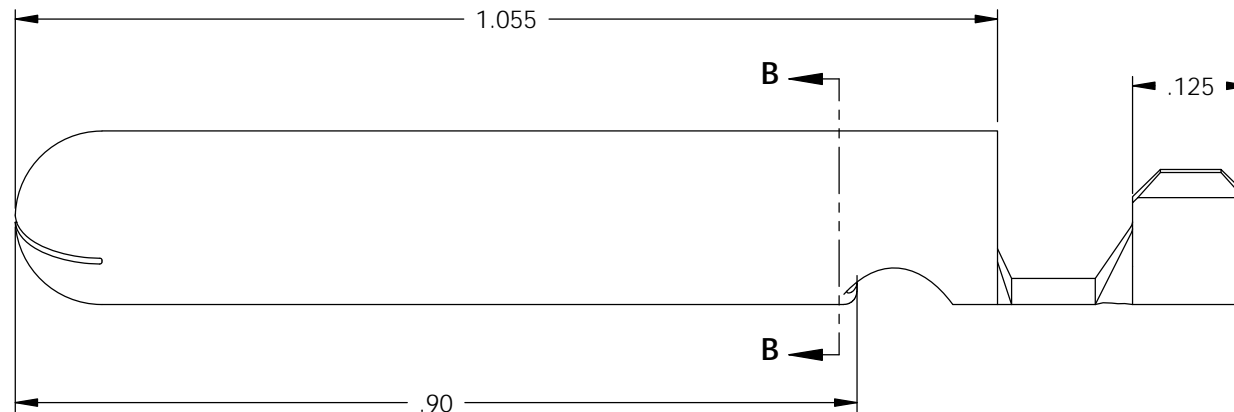
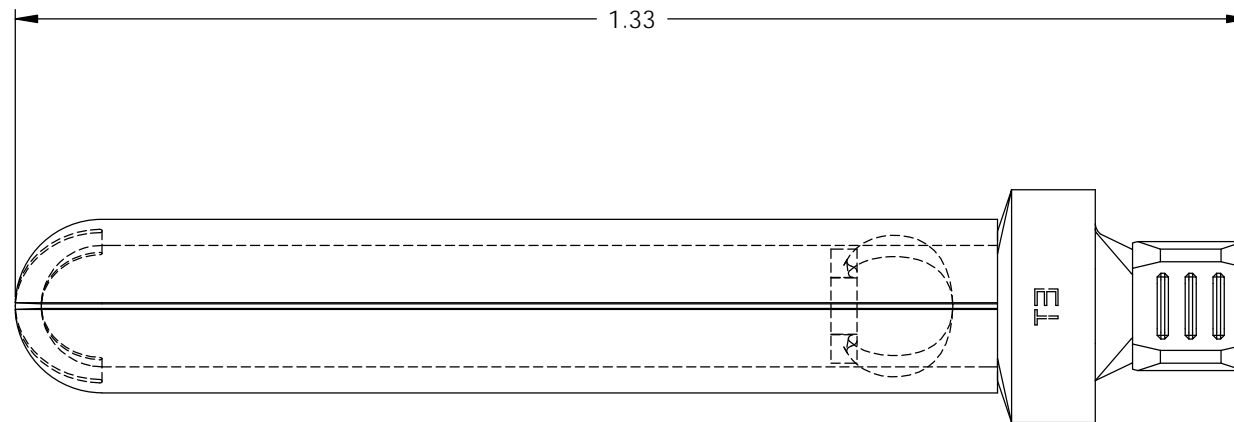
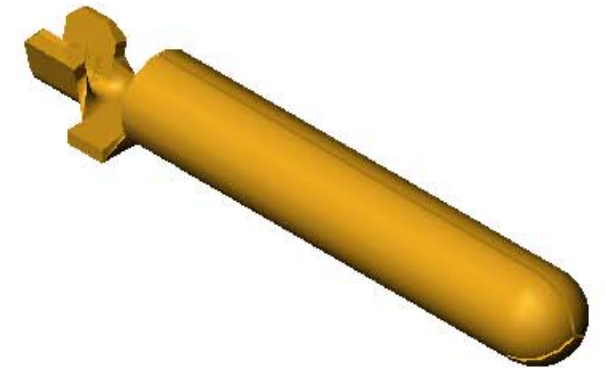


NOTE:

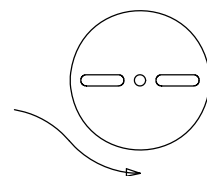
- 1.) .028 THK., BRASS, HALF HARD, ANNEALED TO TEMPER, PER ETCO METAL CODE NO. 00086.
- 2.) DIMENSION MUST BE MAINTAINED FOR THE ENTIRE LENGTH OF THE BARREL OF PIN.
- 3.) FOR REWIND INSTRUCTIONS SEE PR-3-07.
- 4.) PARTS MAY BE COATED WITH A LIGHT FILM OF LUBRICATION USED IN THE MANUFACTURING PROCESS.
- 5.) WIRE RANGE: 16-20 AWG.

Rev.	Description of Change/ SCN#	Date
1	TRANSFER FROM CP TO EP SCJ	6-20-03
2	ECR# 816 SCJ	11-2-11

P/C	DESCRIPTION (2)	REWIND	MAT'L	
14501	PN187H18-CRA-HB	YES	NOTE 1	X
09268	PN187H18-C-HB	NO	NOTE 1	X





DIRECTION EXITING TOOL,
EARS UP, TO THE BACK
SEE NOTE 3



THIS PRINT IS THE PROPERTY OF ETCO INCORPORATED. NO PART OF THIS DESIGN MAY BE USED IN ANY WAY WITHOUT WRITTEN CONSENT FROM ETCO INCORPORATED.

UNCONTROLLED COPY

 THIRD ANGLE PROJECTION TOLERANCES UNLESS OTHERWISE SPECIFIED INCHES: .XX - ±.030 .XXX - ±.015 ANGLES: ±5°	TOOL NO. 0860	Title: ϕ .187 GROUND PIN		
		DO NOT SCALE DWG.	Drawn By: S.JOHNSON	Date: 3-16-07
ETCO Incorporated Engineered Products 25 Bellows Street Warwick, RI 02888 Phone: (401) 467-2400 Fax: (401) 467-9230 www.ETCO.com		Chk'd/App'd By:	Scale: 5X	Size B
		Dwg. No.: PN187H18 cust		