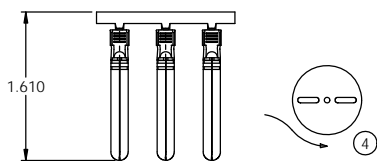
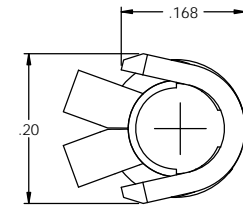
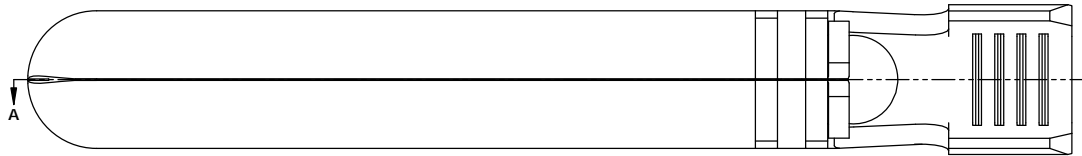
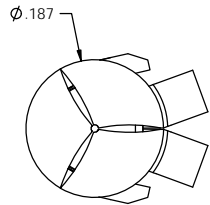
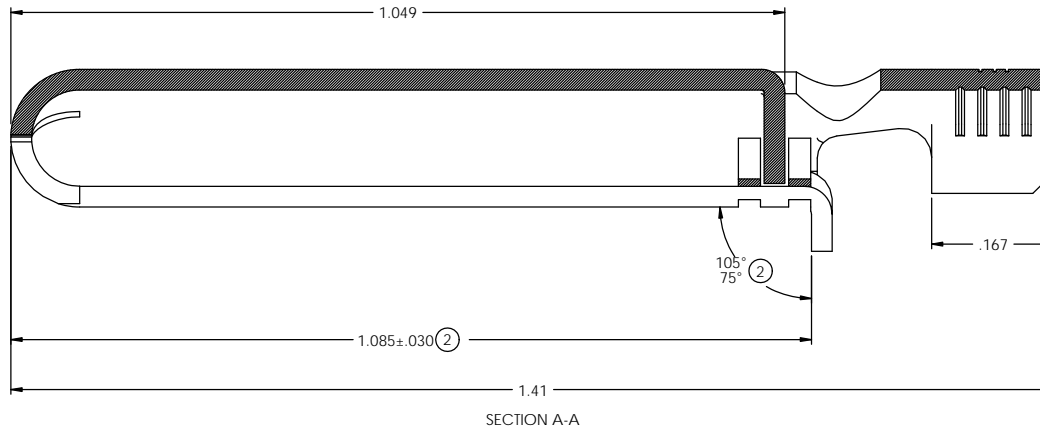
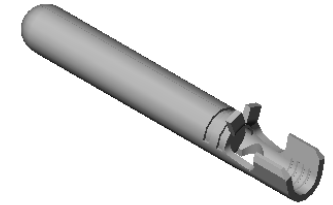
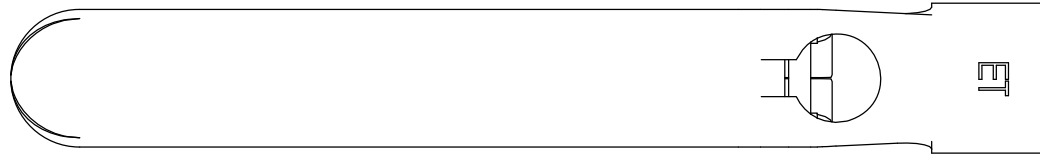


NOTES:

1. MATERIAL: .028 THICK C26000 BRASS: 1/2 HARD
ANNEALED TO TEMPER; PER ETCO METAL CODE 00127.
2. MATERIAL: .028 THICK PRE-TINNED C26000 BRASS: 1/2 HARD
ANNEALED TO TEMPER; PER ETCO METAL CODE 00128.
3. FOR WINDING AND REWINDING INSTRUCTIONS SEE PR-3-07.
4. WIRE RANGE: #14-#18 AWG.

P/C	DESCRIPTION ③	MATL	REWIND	SP
09903	PN187LW-C-HB	NOTE 1	NO	X
14399	PN187LW-C-THB	NOTE 2	NO	X
09853	PN187LW-CRD-HB	NOTE 1	YES	X

Rev.	Description of Change/ SCN#	Date
1	TRANSFERRED FROM CP SCJ	8-27-08
2	ECR# 780 SCJ	9-19-11
3	ECR# 816 SCJ	11-1-11
4	ECR# 962 SCJ	12-6-11



DIRECTION EXITING TOOL
EARS UP, TO THE BACK
SEE NOTE 3

UNCONTROLLED COPY

 THIRD ANGLE PROJECTION	TOOL NO. 0887	Title: GROUND PIN	
	DO NOT SCALE DWG.	Drawn By: S.JOHNSON	Date: 8-27-08
TOLERANCES UNLESS OTHERWISE SPECIFIED INCHES: .XX - ±.030 XXX - ±.015 ANGLES: ±5°		ETCO Incorporated Engineered Products 25 Bellows Street Warwick, RI 02888 Phone: (401) 467-2400 Fax: (401) 467-9230 www.ETCO.com	Chk'd/App'd By: _____ Scale: 8X Size: C
		Dwg. No.: PN187LW cust	