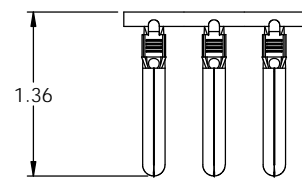
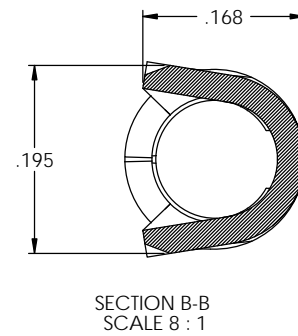
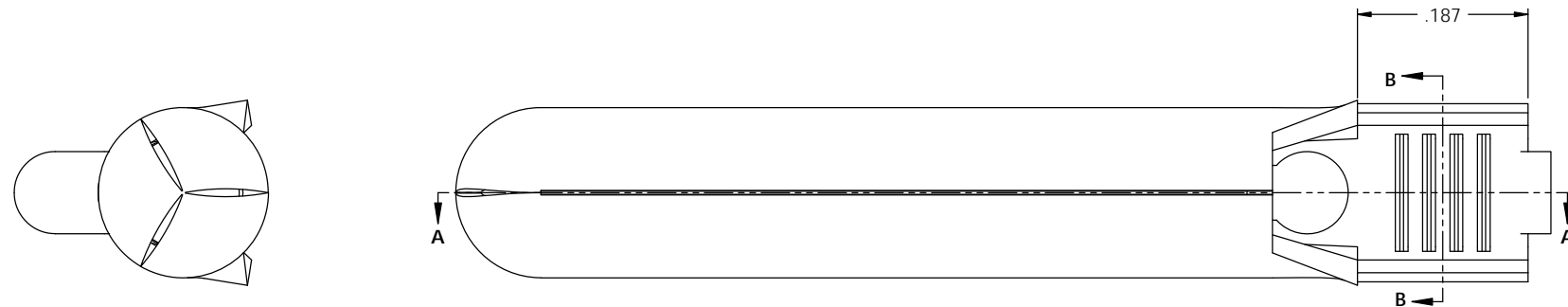
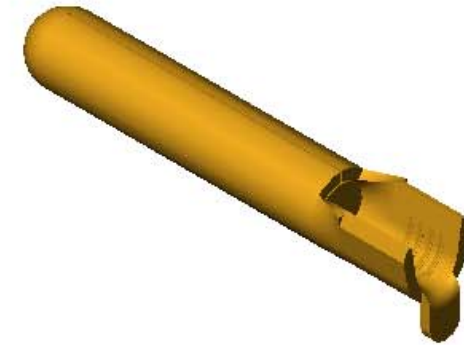
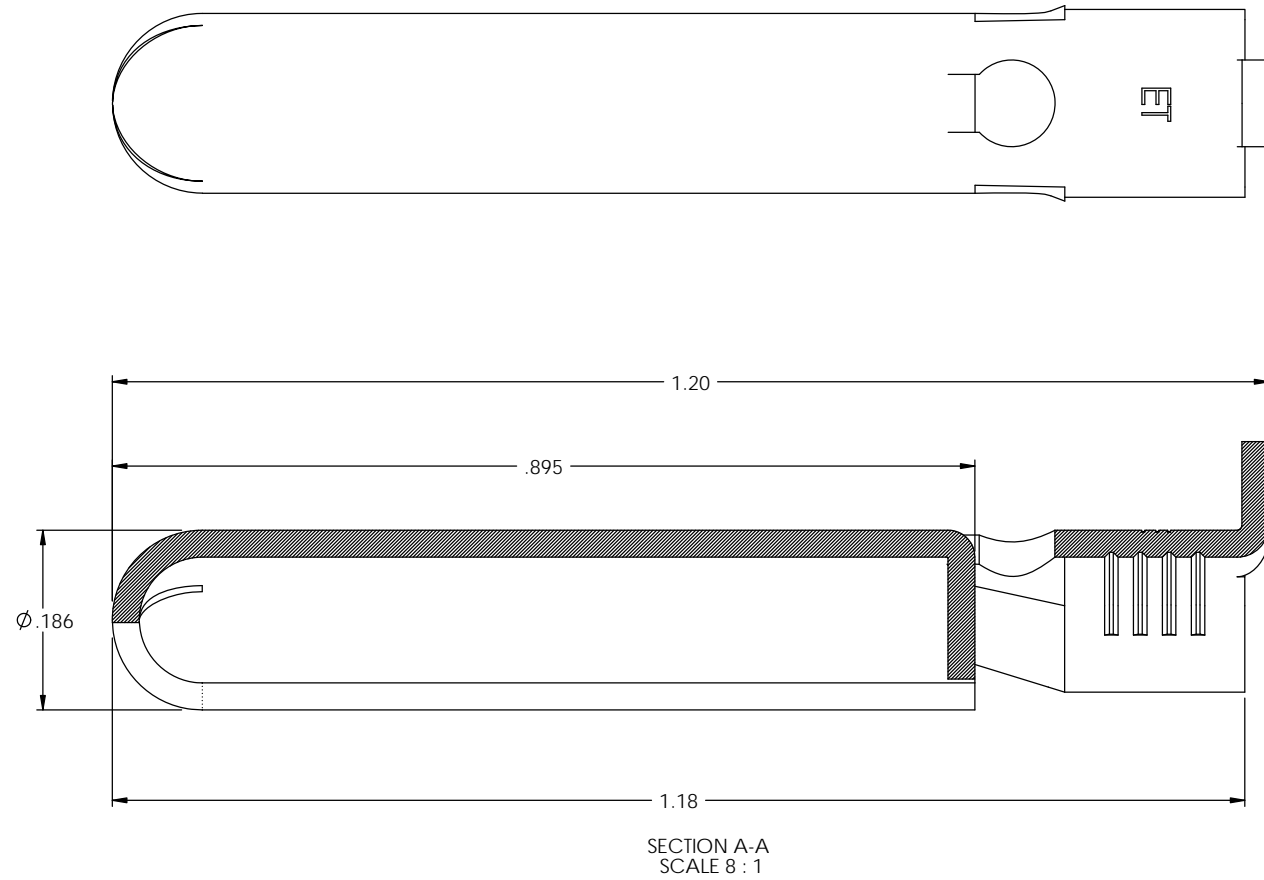


NOTES:

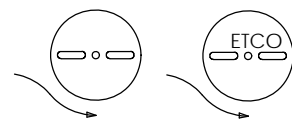
1. MATERIAL: .028 THICK C26000 BRASS; 1/2 HARD  
ANNEALED TO TEMPER; PER ETCO METAL CODE 00085.
2. WIRE RANGE: #14-#18 AWG.
3. PART MUST BREAK FREE FROM CARRIER STRIP AFTER A 90° BEND DOWNWARD  
FOLLOWED BY A 180° BEND UPWARD.

P/C	DESCRIPTION ②	MAT'L	REWIND	SP
09265	PN187S-C-HB	NOTE 1	NO	X
09281	PN187S-CRD-HB	NOTE 1	YES	X

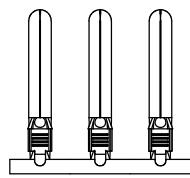
Rev.	Description of Change/ SCN#	Date
1	TRANSFERED FROM CP SCJ	8-27-08
2	ECR# 816 SCJ	11-1-11



DIRECTION EXITING TOOL  
EARS UP, TO THE BACK



DIRECTION TOWARDS APPLICATOR  
EARS UP, TO THE FRONT



<b>UNCONTROLLED COPY</b>			
<p>THIRD ANGLE PROJECTION</p>	TOOL NO. <b>0874</b>	Title: <b>GROUND PIN</b>	
	DO NOT SCALE DWG.		Drawn By: <b>S.JOHNSON</b>
<p>TOLERANCES UNLESS OTHERWISE SPECIFIED</p> <p>INCHES: XX - ±.030 XXX - ±.015</p> <p>ANGLES: ±5°</p>	<p>ETCO Incorporated Engineered Products 25 Bellows Street Warwick, RI 02888 Phone: (401) 467-2400 Fax: (401) 467-9230 www.ETCO.com</p>	Chk'd/App'd By:	Scale: <b>8X</b> Size: <b>C</b>
		Dwg. No.: <b>PN187S cust</b>	