
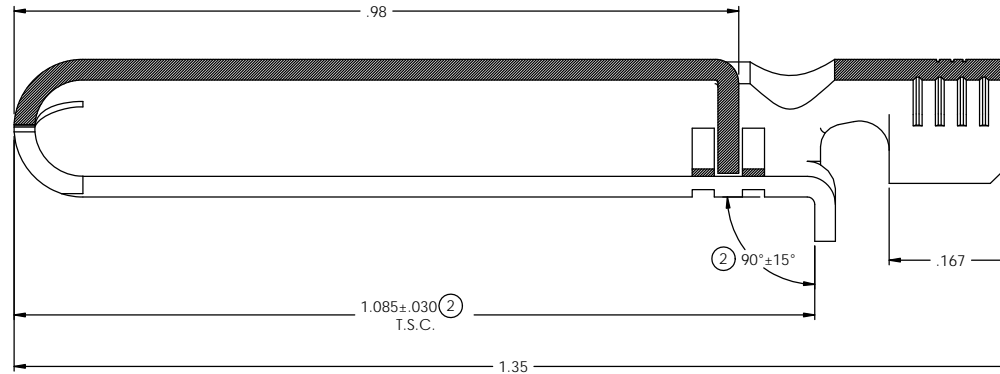
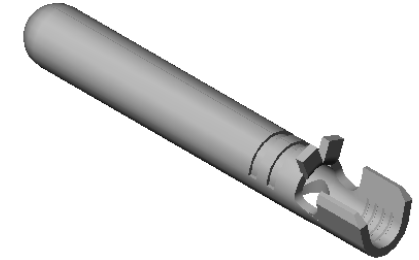


NOTES:

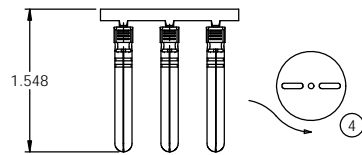
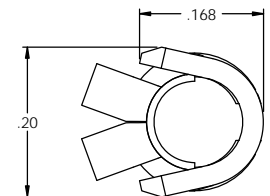
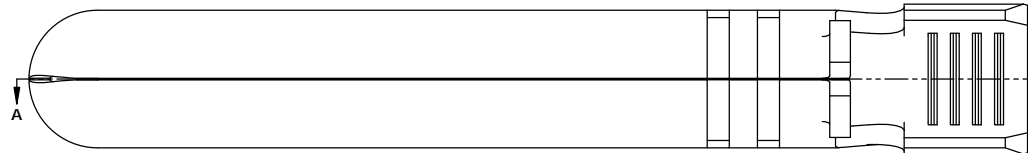
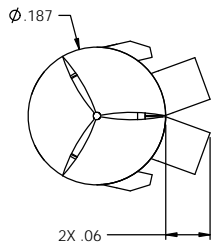
1. MATERIAL: .028 THICK C26000 BRASS: 1/2 HARD
ANNEALED TO TEMPER; PER ETCO METAL CODE 00112.
2. MATERIAL: .028 THICK PRE-TINNED C26000 BRASS: 1/2 HARD
ANNEALED TO TEMPER; PER ETCO METAL CODE 00129.
3. FOR WINDING AND REWINDING INSTRUCTIONS SEE PR-3-07.
4. PART MUST BREAK FREE FROM THE CARRIER STRIP AFTER A 90° BEND
DOWNWARD FOLLOWED BY A 180° BEND UPWARD.
5. WIRE RANGE: #14-#18 AWG.

P/C	DESCRIPTION (3)	MAT'L	REWIND	
09263	PN187W-C-HB	NOTE 1	NO	X
09928	PN187W-CRD-HB	NOTE 1	YES	X
14022	PN187W-CRA-HB	NOTE 1	YES	X
14000	PN187W-C-THB	NOTE 2	NO	X

Rev.	Description of Change/ SCN#	Date
1	ACTIVATED P/C 09928 SCJ	12-12-05
2	ECR #780 JMR	8-19-11
3	ECR# 816 SCJ	11-1-11
4	ECR# 962 SCJ	12-6-11



SECTION A-A
SCALE 8 : 1



DIRECTION EXITING TOOL
EARS UP, TO THE BACK
SEE NOTE 3

UNCONTROLLED COPY			
 <small>THIRD ANGLE PROJECTION TOLERANCES UNLESS OTHERWISE SPECIFIED</small> INCHES: .XX : ± .030 .XXX : ± .015 ANGLES : ± 5°	TOOL NO. 0887	Title: GROUND PIN	
	DO NOT SCALE DWG.	Drawn By: S.Johnson	Date: 12-12-05
	ETCO Incorporated Engineered Products 25 Bellows Street Warwick, RI 02888 Phone: (401)467-2400 FAX: (401)467-9230 www.ETCO.com	Chk'd/App'd By: 8X	Scale: C
		Dwg. No.: PN187W	