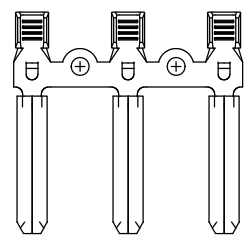
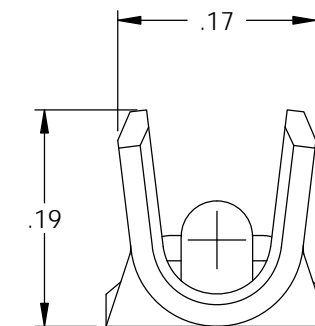
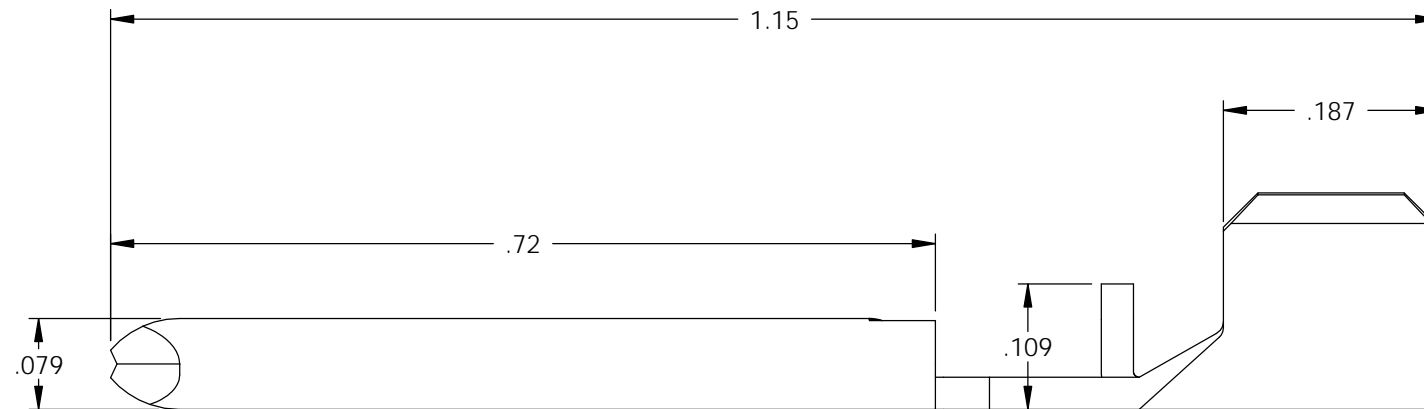
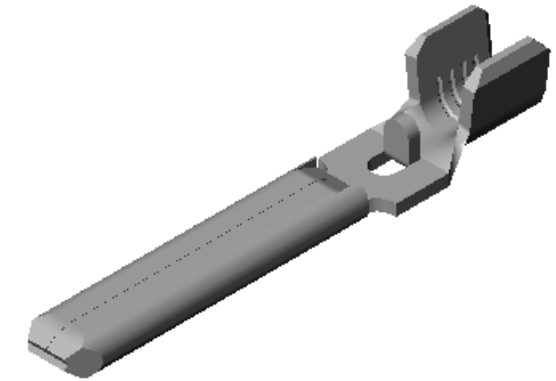
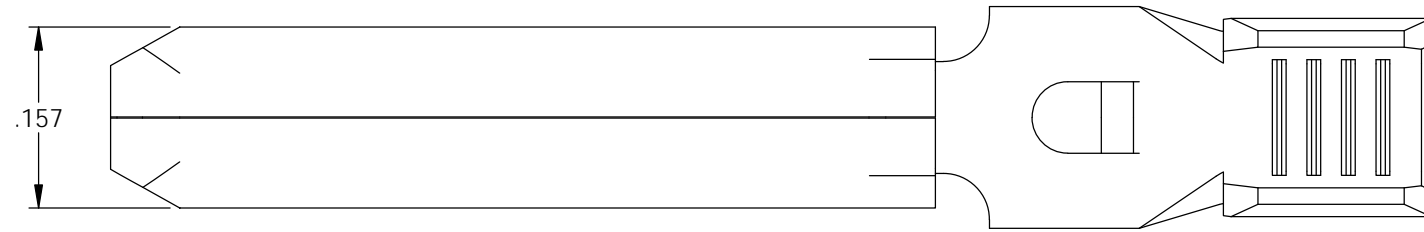
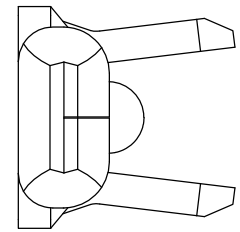


NOTES:

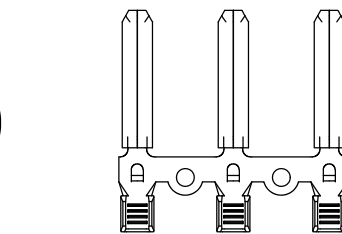
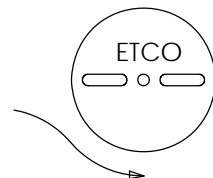
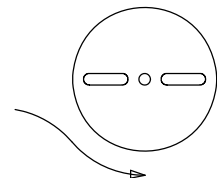
1. MATERIAL: .028 THICK C26000 PRE-TINNED BRASS, 1/2 HARD, ANNEALED TO TEMPER, PER ETCO METAL CODE 01679.
2. PARTS MAY BE COATED WITH A LIGHT FILM OF LUBRICATION USED IN THE MANUFACTURING PROCESS.
3. WIRE RANGE: 12-14 AWG (3)

P/C	DESCRIPTION (2)	MAT'L
14170	PN977-1-C-THB	NOTE 1

Rev.	Description of Change/ SCN#	Date
1	REDRAWN ON SOLIDWORKS SCJ ORG.ENG.DWG.DATE: 9-12-96	9-4-07
2	ECR# 816 SCJ	11-4-11
3	ECR# 3733 SCJ	10/23/14



DIRECTION EXITING TOOL  
EARS UP, TO THE BACK



DIRECTION TOWARDS APPLICATOR  
EARS UP, TO THE FRONT

# UNCONTROLLED COPY

<p>THIRD ANGLE PROJECTION TOLERANCES UNLESS OTHERWISE SPECIFIED INCHES: .XX - ±.030 .XXX - ±.015 ANGLES: ±5°</p>	<p>TOOL NO. <b>0822</b></p>	<p>Title: <b>MALE TERMINAL</b></p>		
		<p>DO NOT SCALE DWG.</p>	<p>Drawn By: C. O'REILLY</p>	<p>Date: 9-4-07</p>
<p>ETCO Incorporated Engineered Products 25 Bellows Street Warwick, RI 02888 Phone: (401) 467-2400 Fax: (401) 467-9230 www.ETCO.com</p>		<p>Chk'd/App'd By:</p>	<p>Scale: 6X</p>	<p>Size B</p>
		<p>Dwg. No.: <b>PN977-1 cust</b></p>		