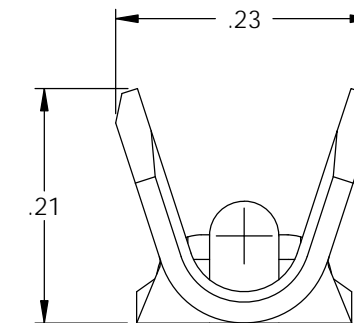
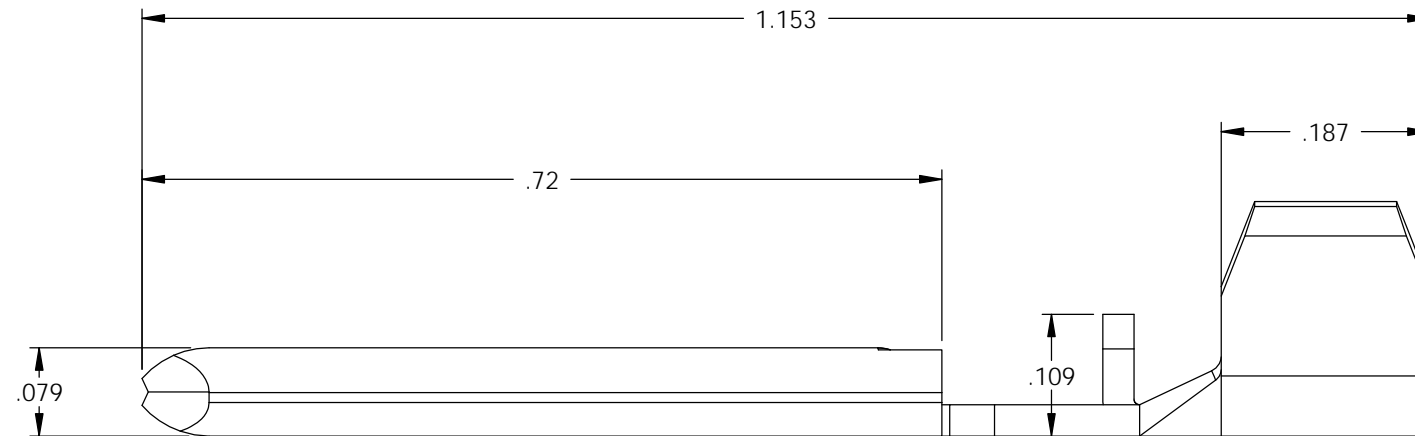
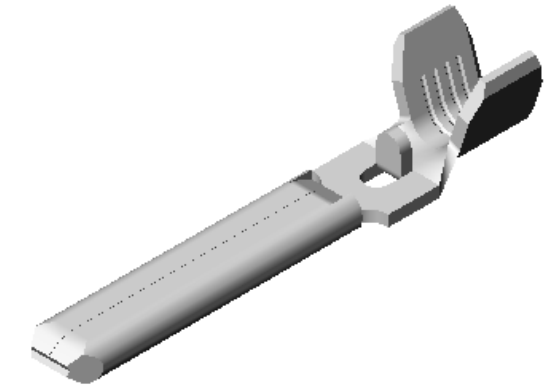
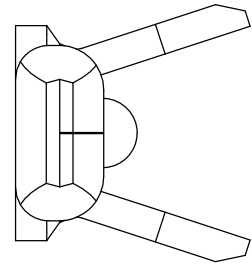


NOTES:

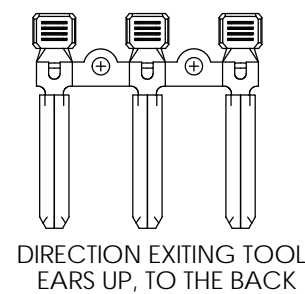
1. MATERIAL: .028 THICK C26000 PRE-TINNED BRASS,
1/2 HARD, ANNEALED TO TEMPER,
PER ETCO METAL CODE 01679.
2. PARTS MAY BE COATED WITH A LIGHT FILM OF LUBRICATION
USED IN THE MANUFACTURING PROCESS.
3. WIRE RANGE: #10 AWG

P/C	DESCRIPTION (9)	MAT'L
14250	PN97710-C-THB	Note 1

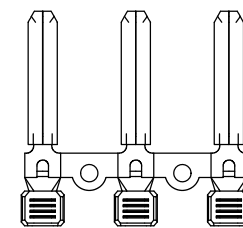
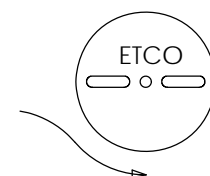
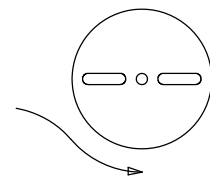
Rev.	Description of Change/ SCN#	Date
-	CUSTOMER DRAWING REL.	7/23/08
1	ECR# 816 SCJ	11-3-11



UNCONTROLLED COPY



DIRECTION EXITING TOOL
EARS UP, TO THE BACK



DIRECTION TOWARDS APPLICATOR
EARS UP, TO THE FRONT

THIRD ANGLE PROJECTION
TOLERANCES UNLESS OTHERWISE SPECIFIED
INCHES: .XX - ±.030
.XXX - ±.015
ANGLES: ±5°

TOOL NO.
0822

Title: **MALE TERMINAL**

DO NOT SCALE DWG.

Drawn By: J. RAMALHO

Date: 7/23/08



ETCO Incorporated
Engineered Products
25 Bellows Street
Warwick, R.I. 02888
Phone: (401)467-2400
FAX: (401)467-9230
www.ETCO.com

Chk'd/App'd By:

Scale:
6X

Size
B

Dwg. No.:

PN977-10 cust