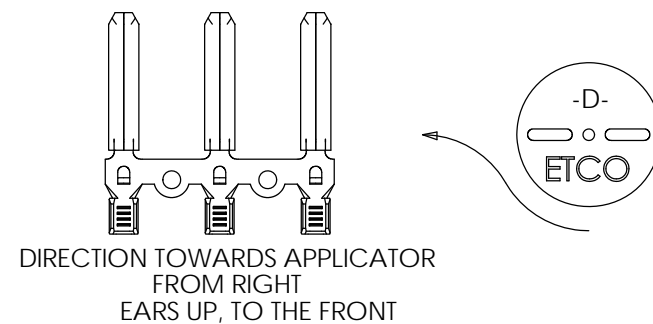
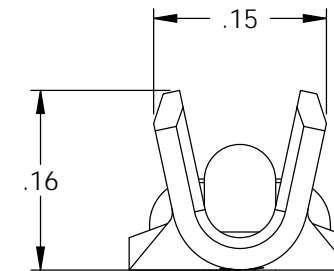
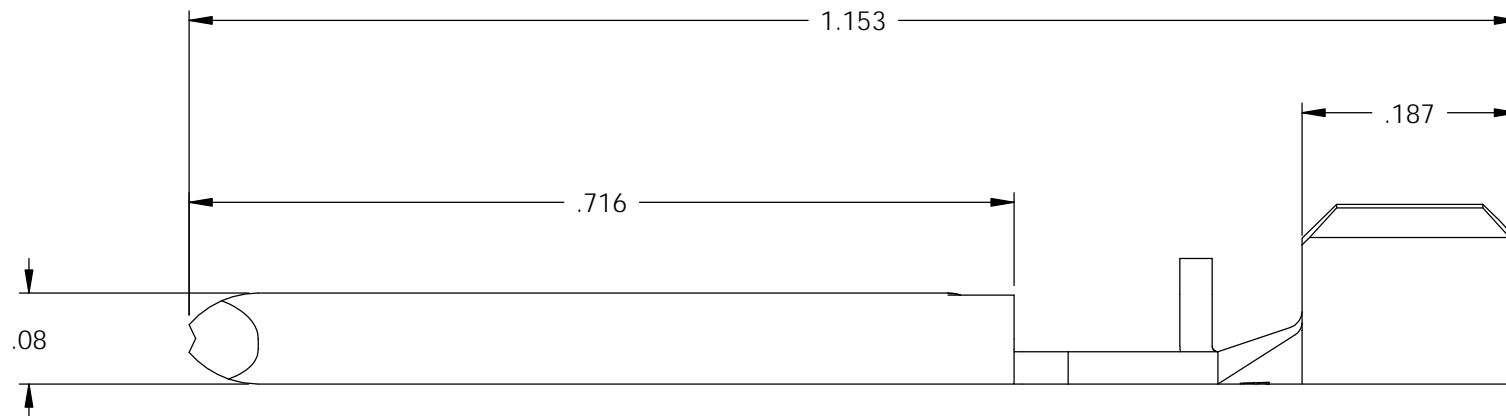
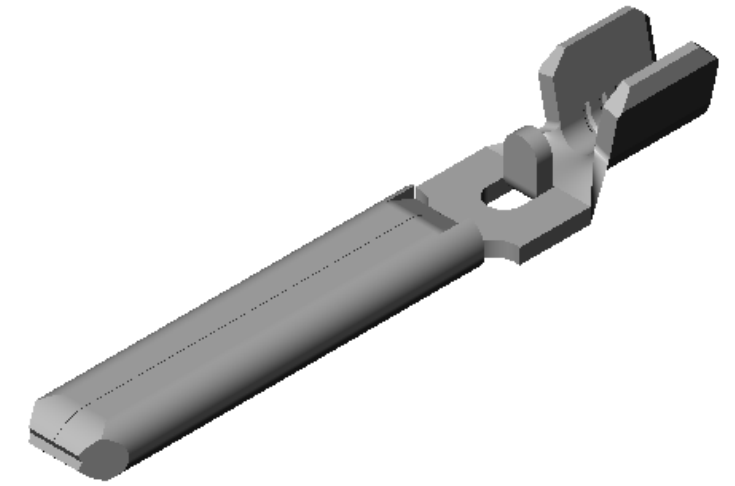
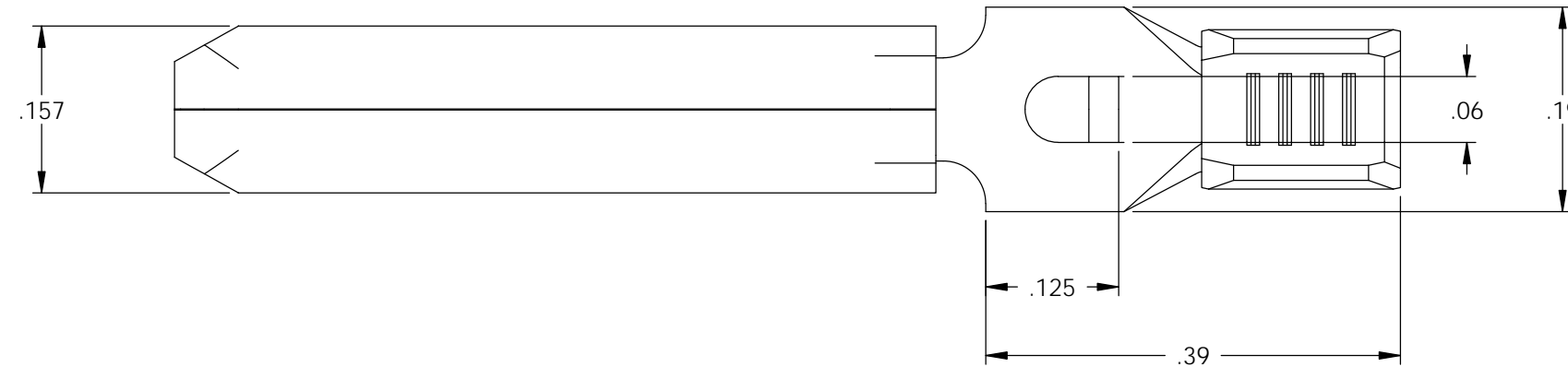


NOTES:

1. MATERIAL: .028 THICK C26000 BRASS, 1/2 HARD, ANNEALED TO TEMPER, PER ETCO METAL CODE 00174.
2. POST PLATE: .00020 THK. BRIGHT NICKEL
3. WIRE RANGE: #14-#18 AWG (2)

P/C	PART NUMBER	MAT'L	PLATING
14157	PN977-C-D-HB-NPAF	NOTE 1	NOTE 2

Rev.	Description of Change/ SCN#	Date
1	INITIAL RELEASE JPD	8-9-07
2	SCN-140482 JMR	5-20-09
3	ECR# 816 SCJ	11-3-11



UNCONTROLLED COPY

<p>THIRD ANGLE PROJECTION TOLERANCES UNLESS OTHERWISE SPECIFIED INCHES: .XX - ±.030 .XXX - ±.015 ANGLES: ±5°</p>	<p>TOOL NO. 0822</p>	<p>Title: MALE TERMINAL</p>		
		<p>DO NOT SCALE DWG.</p>	<p>Drawn By: J. DeSio</p>	<p>Date: 08-09-07</p>
<p>ETCO Incorporated Engineered Products 25 Bellows Street Warwick, RI 02888 Phone: (401) 467-2400 Fax: (401) 467-9230 www.ETCO.com</p>		<p>Chk'd/App'd By:</p>	<p>Scale: 6X</p>	<p>Size B</p>
		<p>Dwg. No.: PN977-NPAF cust</p>		