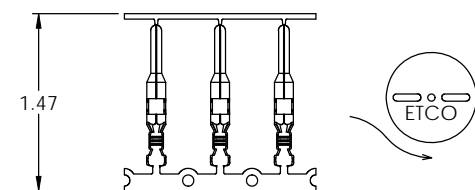
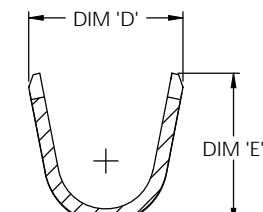
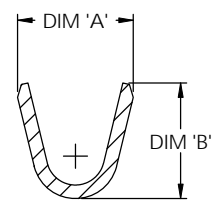
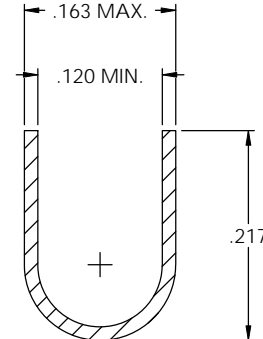
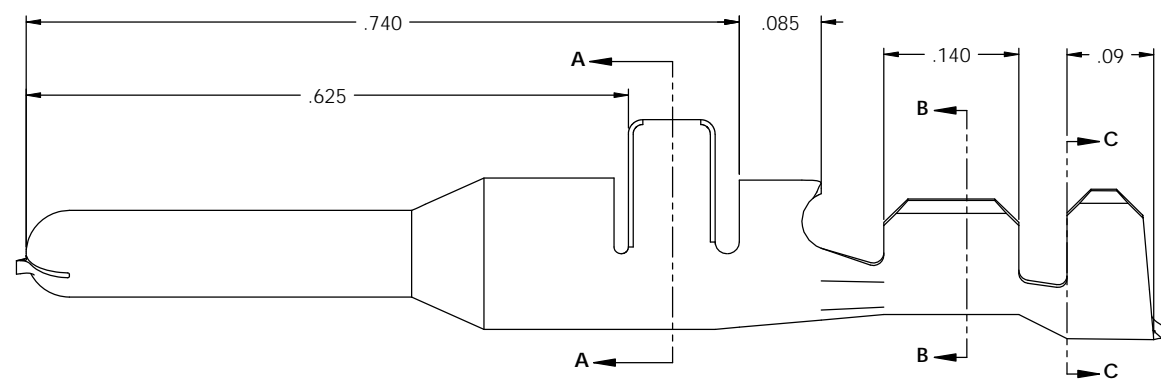
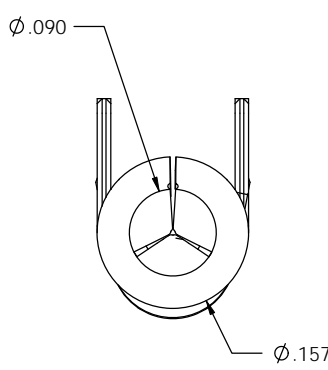
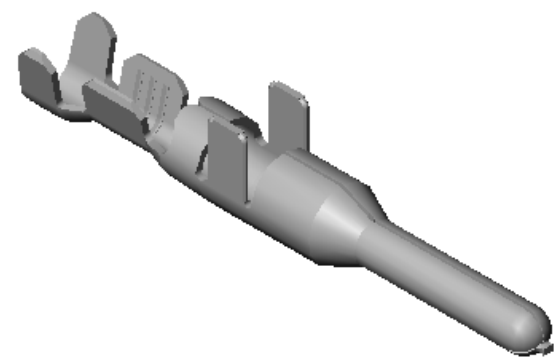
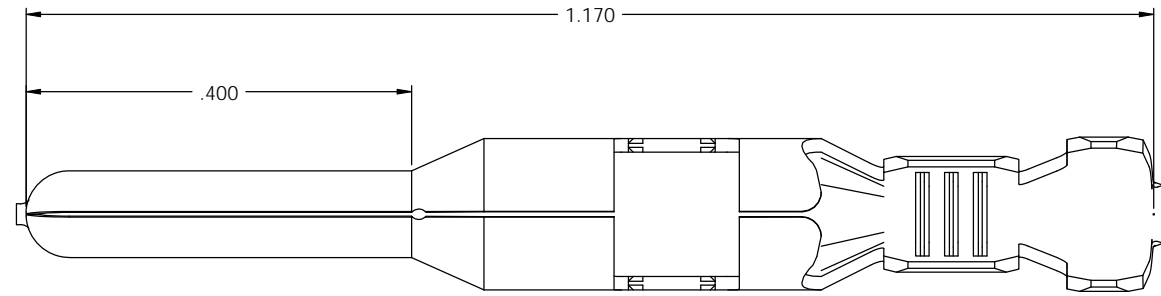


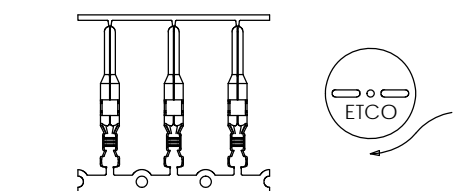
- NOTE:
 1.) MAT'L: .014 THK., PRE-TINNED ALLOY C19400, #4 TEMPER (FULL HARD), PER ETCO METAL CODE NO. 03757.
 2.) MAT'L: .014 THK., PRE-TINNED BRASS, #4 TEMPER (FULL HARD), PER ETCO METAL CODE NO. 05270.
 3.) PARTS MAY BE COATED WITH A LIGHT FILM OF LUBRICATION USED IN THE MANUFACTURING PROCESS.
 4.) INSULATION SUPPORT WIDTH AFTER CRIMPING TO BE .205 MAX.
 5.) PART SHOWN: PNC90-10-TAL194.

| P/C | DESCRIPTION | DIM 'A' | DIM 'B' | DIM 'D' | DIM 'E' | MAT'L | WIRE RANGE | INSUL. RANGE |
|-------|-----------------|---------|---------|---------|---------|--------|------------|--------------|
| 09153 | PNC90-10-TAL194 | .12 | .120 | .16 | .155 | NOTE 1 | 20-18 AWG | Ø .085-.120 |
| 09154 | PNC90-20-TAL194 | .14 | .165 | .20 | .20 | NOTE 1 | 16-14 AWG | Ø .105-.150 |
| 09155 | PNC90-30-TAL194 | .16 | .185 | .22 | .22 | NOTE 1 | 12 AWG | Ø .120-.170 |
| 09158 | PNC90-20-THB | .14 | .165 | .20 | .20 | NOTE 2 | 16-14 AWG | Ø .105-.150 |

| Rev. | Description of Change/ SCN# | Date |
|------|---|---------|
| 1 | SCN# 102026 SCJ ORG.ENG.DWG.DATE: 11-17-92 | 9-27-02 |



DIRECTION EXITING TOOL, EARS UP TO THE FRONT



DIRECTION TOWARD APPLICATOR, EARS UP TO THE FRONT

UNCONTROLLED COPY

| | | | |
|--|---|--|--|
| THIRD ANGLE PROJECTION | TOOL NO. 0467 | Title: PIN | |
| | TOLERANCES UNLESS OTHERWISE SPECIFIED INCHES: XX - ±.030 XXX - ±.015 ANGLES: ±5° | | DO NOT SCALE DWG. Drawn By: S. Johnson Date: 10-2-02 |
| Dwg. No.: PNC90-10, -20, -30 cust | | ETCO Incorporated Engineered Products 25 Bellows Street Warwick, RI 02888 Phone: (401) 467-2400 Fax: (401) 467-9230 www.ETCO.com | |