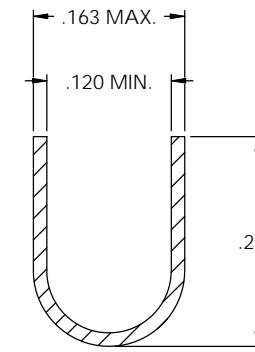
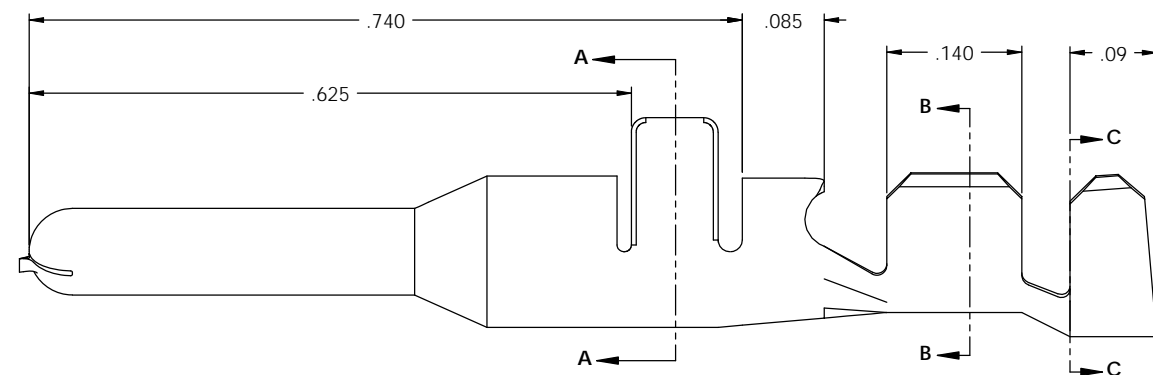
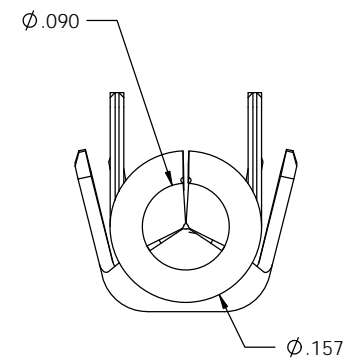
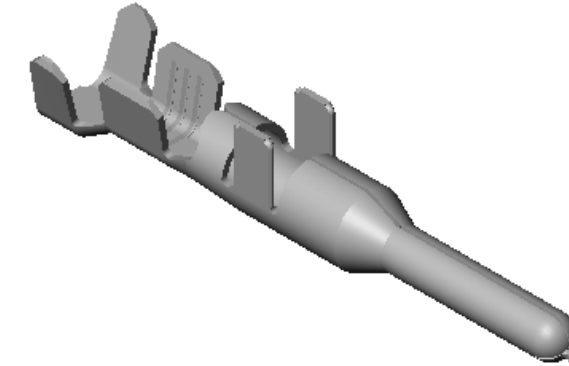
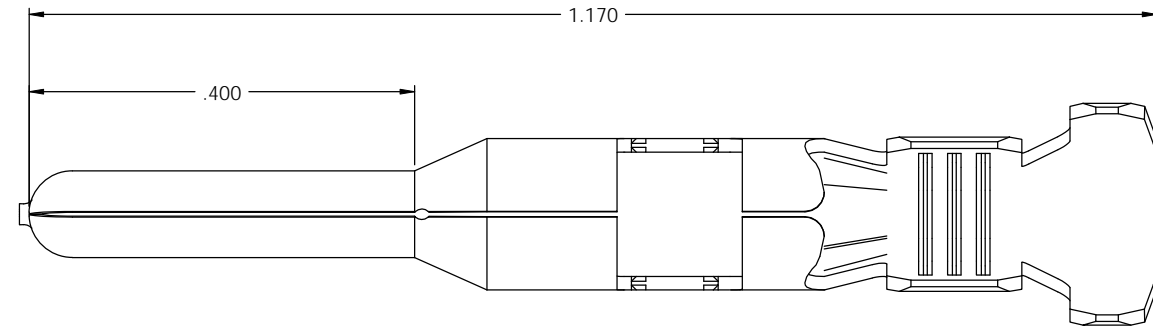


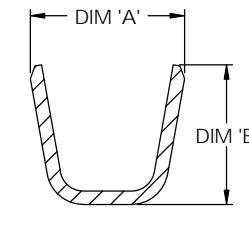
- NOTE:
 1.) MAT'L: .014 THK., PRE-TINNED ALLOY C19400, #4 TEMPER (FULL HARD), PER ETCO METAL CODE NO. 03757.
 2.) PARTS MAY BE COATED WITH A LIGHT FILM OF LUBRICATION USED IN THE MANUFACTURING PROCESS.
 3.) INSULATION SUPPORT WIDTH AFTER CRIMPING TO BE .205 MAX.
 4.) PART SHOWN: PNC90-40-TAL194.

P/C	DESCRIPTION	DIM 'A'	DIM 'B'	DIM 'D'	DIM 'E'	WIRE RANGE	INSUL. RANGE
09156	PNC90-40-TAL194	.16	.145	.23	.165	TWO 16 AWG OR ONE 14 AWG AND ONE 20 AWG	Ø .105-.150
09157	PNC90-50-TAL194	.18	.175	.26	.195	TWO 20 AWG OR TWO 18 AWG	Ø .085-.120

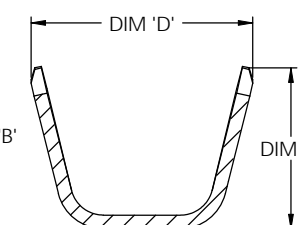
Rev.	Description of Change/ SCN#	Date
1	SCN# 102026 SCJ ORG.ENG.DWG.DATE: 11-18-92	9-27-02



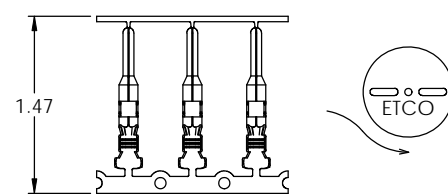
SECTION A-A
SCALE 8 : 1



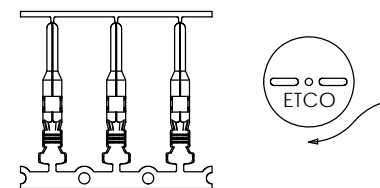
SECTION B-B
SCALE 8 : 1



SECTION C-C
SCALE 8 : 1



DIRECTION EXITING TOOL,
EARS UP TO THE FRONT



DIRECTION TOWARD APPLICATOR,
EARS UP TO THE FRONT

UNCONTROLLED COPY

 THIRD ANGLE PROJECTION	TOOL NO.	Title: PIN	
	0467	DO NOT SCALE DWG.	Date: 10-2-02
TOLERANCES UNLESS OTHERWISE SPECIFIED INCHES: XX - ±.030 XXX - ±.015 ANGLES: ±5°	 ETCO Incorporated 25 Bellows Street Warwick, RI 02888 Phone: (401) 467-2400 Fax: (401) 467-9230 www.ETCO.com	Drawn By: S. Johnson	Scale: 8X
		Chk'd/App'd By:	Size: C
Dwg. No.: PNC90-40, -50 cust			