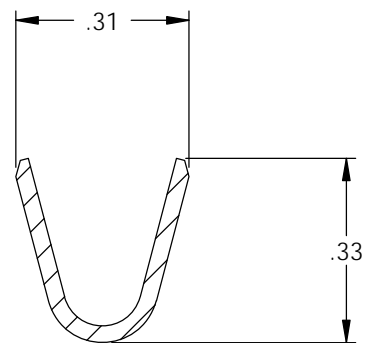
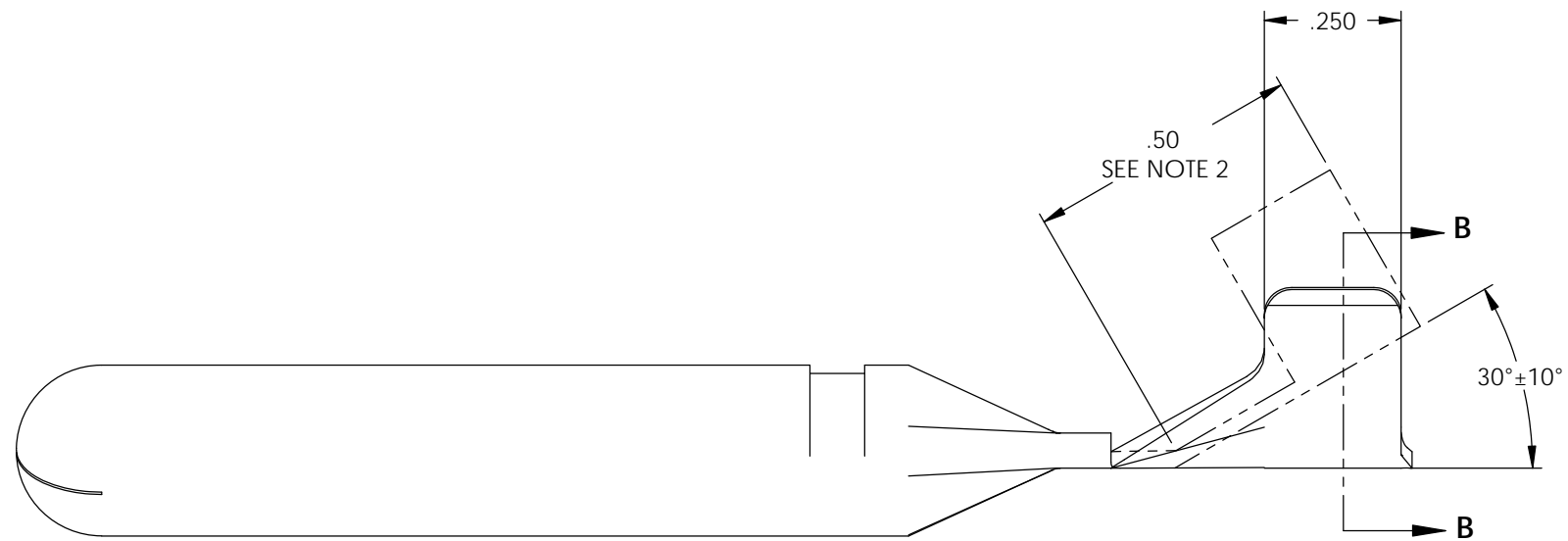
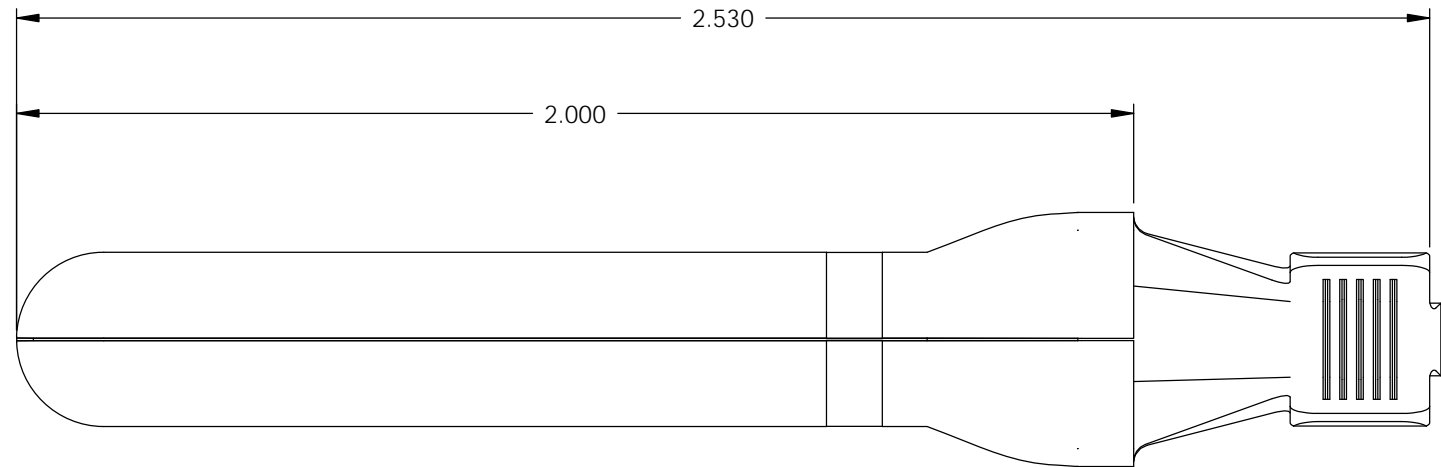
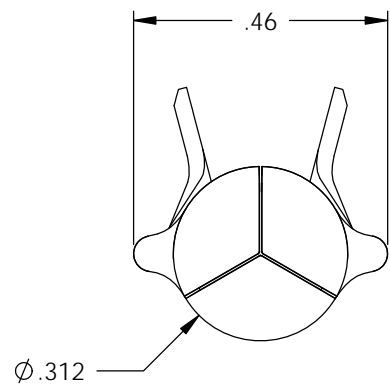
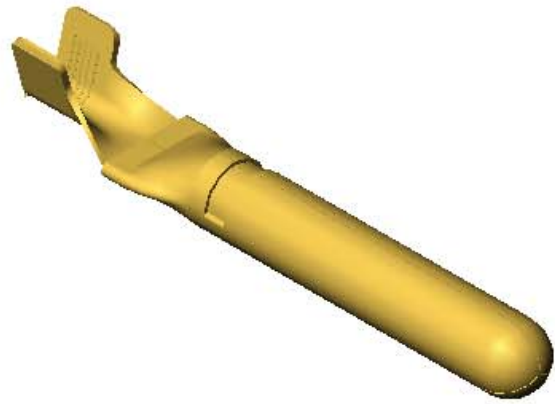


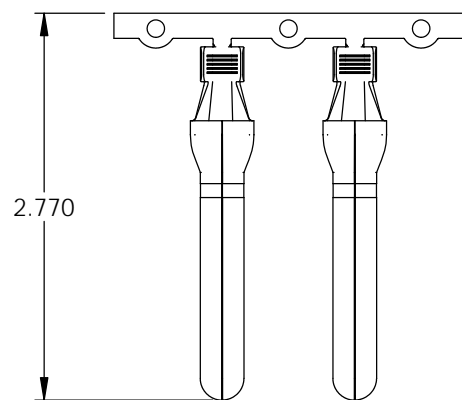
- NOTE:  
 1.) MAT'L: .030 THK., BRASS,  
 #2 TEMPER (HALF HARD), ANNEALED TO TEMPER,  
 PER ETCO METAL NO. 00103.  
 2.) PART IS BENT IN APPLICATOR AS SHOWN.  
 3.) PARTS MAY BE COATED WITH A LIGHT FILM OF  
 LUBRICATION USED IN THE MANUFACTURING  
 PROCESS.  
 4.) WIRE RANGE: 6-10 AWG.

P/C	DESCRIPTION (2)	MAT'L
82030	PNGRD106-C-HB	NOTE 1

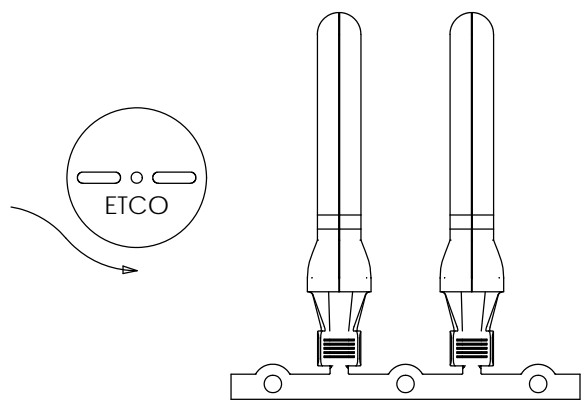
Rev.	Description of Change/ SCN#	Date
1	TRANSFERED FROM CP SCJ	8-27-08
2	ECR# 816 SCJ	11-1-11



SECTION B-B  
SCALE 3 : 1



DIRECTION EXITING TOOL,  
EARS UP, TO THE BACK



DIRECTION TOWARD APPLICATOR,  
EARS UP, TO THE FRONT

**UNCONTROLLED COPY**

<p>THIRD ANGLE PROJECTION TOLERANCES UNLESS OTHERWISE SPECIFIED INCHES: .XX - ±.030 .XXX - ±.015 ANGLES: ±5°</p>	<p>TOOL NO. <b>0867</b></p>	<p>Title: <math>\phi</math>.312 GROUND PIN - STRIP FORM</p>		
		<p>DO NOT SCALE DWG.</p>	<p>Drawn By: S.JOHNSON</p>	<p>Date: 8-27-08</p>
<p>ETCO Incorporated Engineered Products 25 Bellows Street Warwick, RI 02888 Phone: (401) 467-2400 Fax: (401) 467-9230 www.ETCO.com</p>		<p>Chk'd/App'd By:</p>	<p>Scale: 3X</p>	<p>Size B</p>
		<p>Dwg. No.: <b>PNGRD106 - Strip form cust</b></p>		