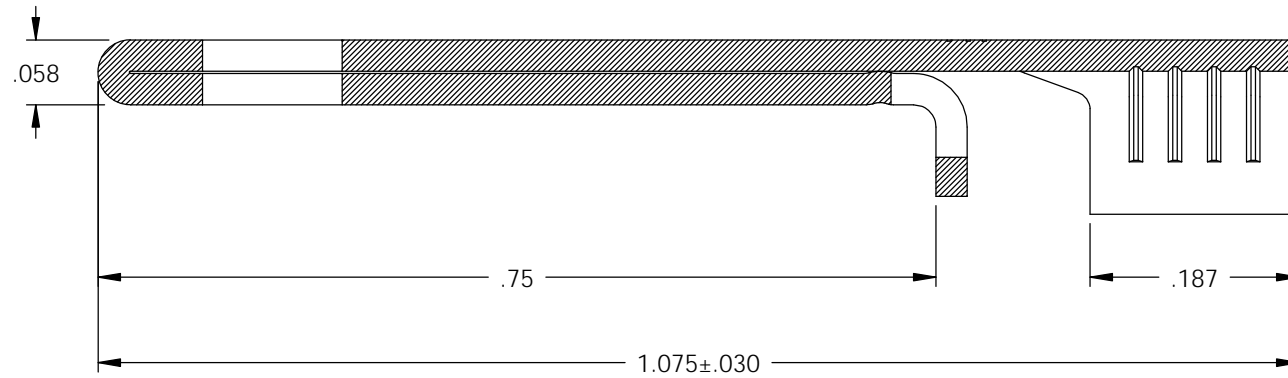


NOTES:

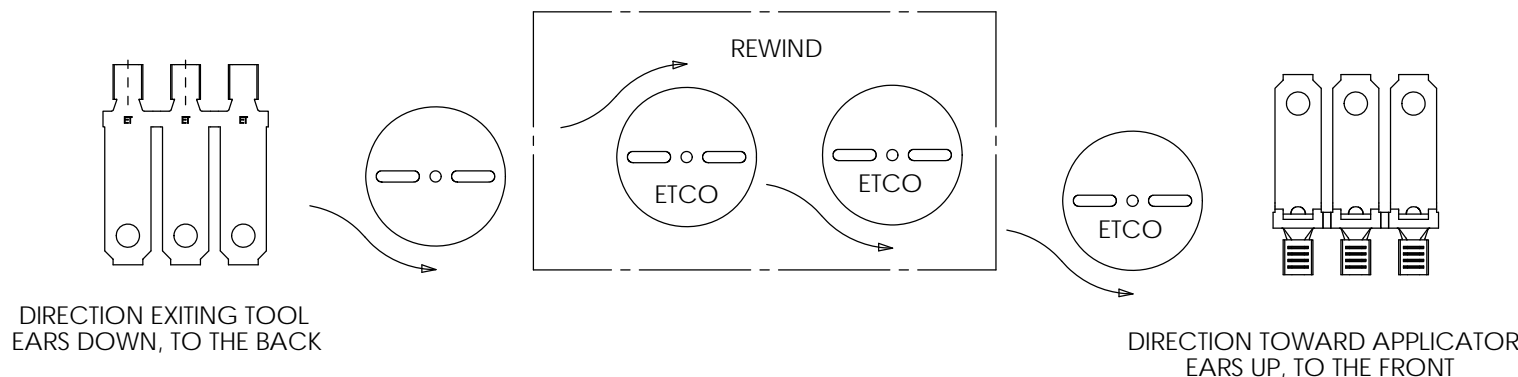
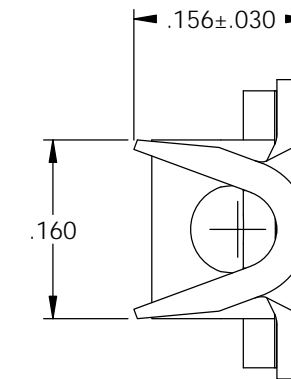
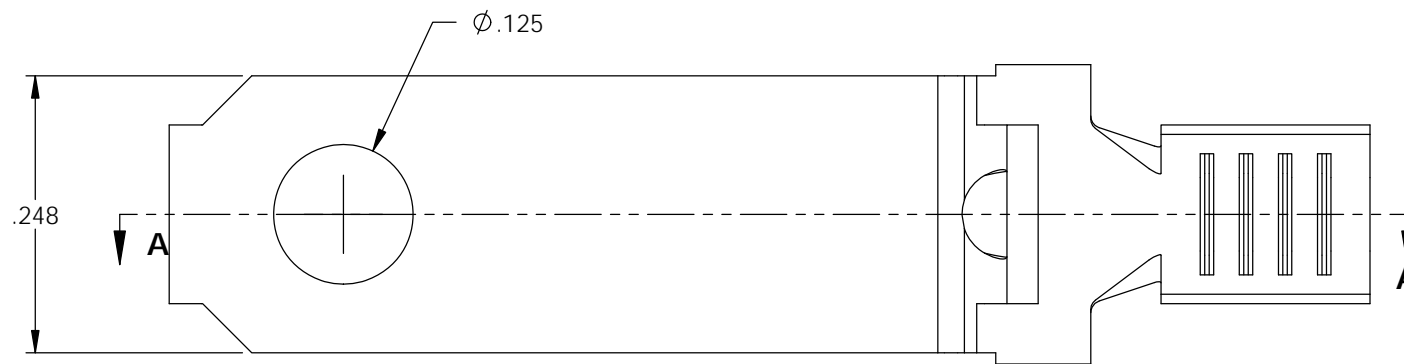
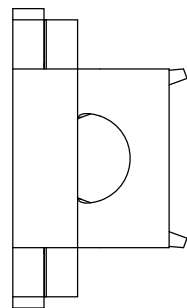
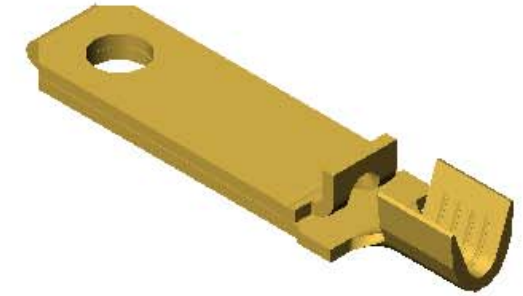
1. MATERIAL: .028 THICK C26000 BRASS; 1/2 HARD
ANNEALED TO TEMPER; PER ETCO METAL CODE 00714.
2. WIRE RANGE: #14-#18 AWG.

P/C	DESCRIPTION (8)	MAT'L	REWIND	
09896	PP1F-ARC-HB	NOTE 1	YES	X

Rev.	Description of Change/ SCN#	Date
1	TRANSFER FROM CP TO EP	10-26-04
2	ECR# 816 SCJ	11/02/11
3	ECR# 2099 SCJ	5/09/13

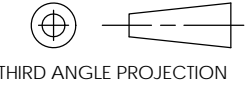



SECTION A-A
SCALE 6 : 1



THIS PRINT IS THE PROPERTY OF ETCO INCORPORATED. NO PART OF THIS DESIGN MAY BE USED IN ANY WAY WITHOUT WRITTEN CONSENT FROM ETCO INCORPORATED.

UNCONTROLLED COPY

 THIRD ANGLE PROJECTION TOLERANCES UNLESS OTHERWISE SPECIFIED INCHES: .XX - ±.030 .XXX - ±.015 ANGLES - ±5°	TOOL NO. 0857	Title: NON-POLARIZED BLADE		
		DO NOT SCALE DWG.		Drawn By: S.JOHNSON Date: 6/27/03
		ETCO Incorporated Engineered Products 25 Bellows Street Warwick, R.I. 02888 Phone: (401)467-2400 FAX: (401)467-9230 www.ETCO.com	Chk'd/App'd By:	Scale: 6X Size: B
		Dwg. No.: PP1F		