

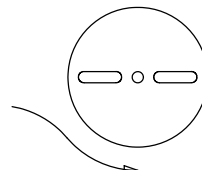
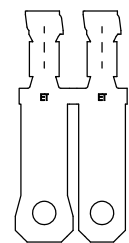
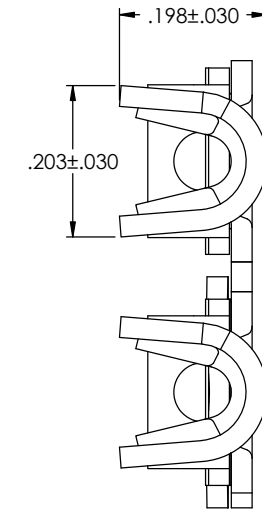
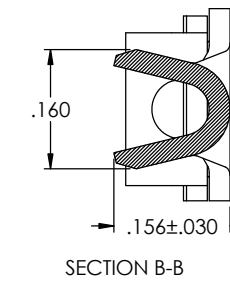
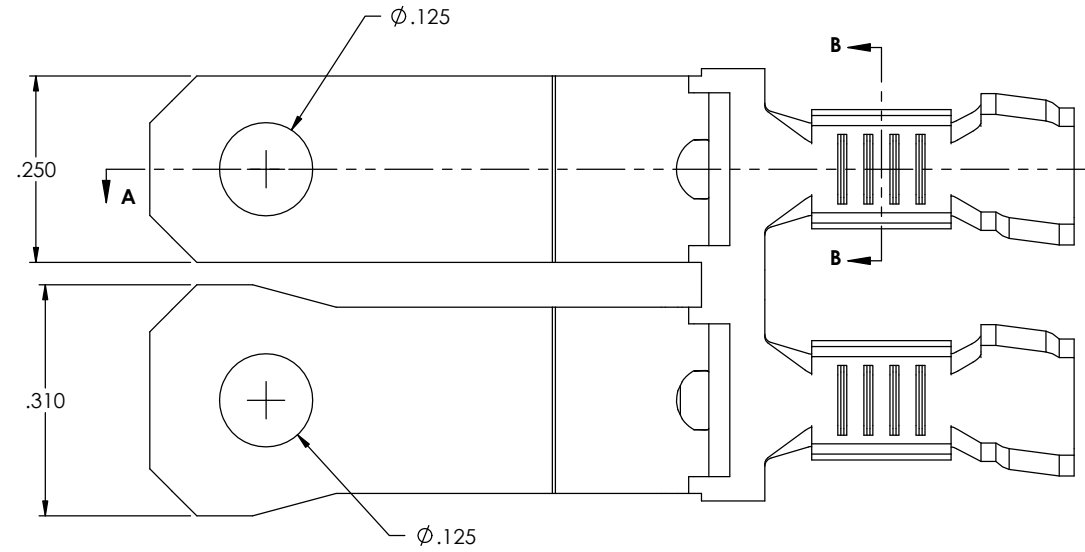
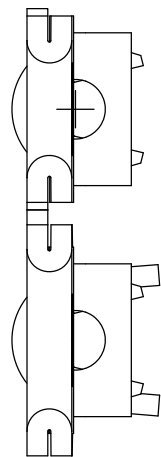
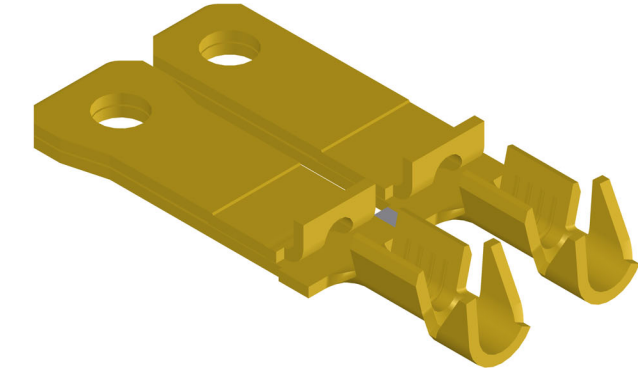
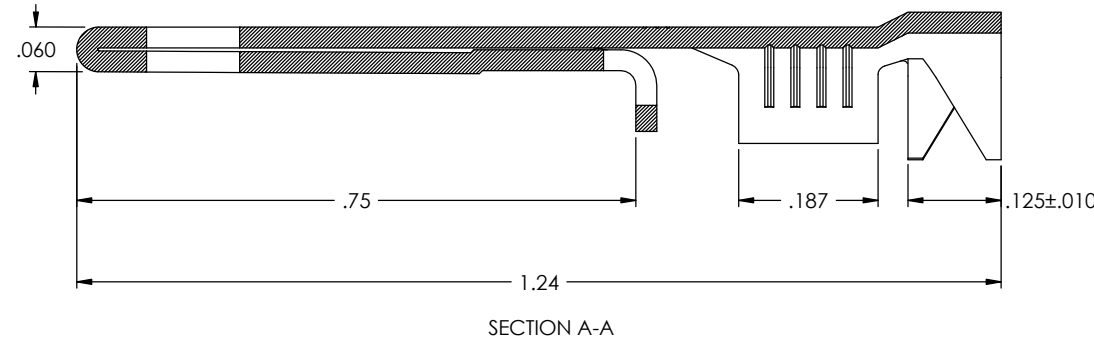


NOTES:



1. MATERIAL: .028 THICK C26000 BRASS; 1/2 HARD
ANNEALED TO TEMPER; PER ETCO METAL CODE 1-0097.
2. MATERIAL: .028 THICK C26000 PRETINNED BRASS; 1/2 HARD
ANNEALED TO TEMPER; PER ETCO METAL CODE 1-1705.
3. FOR REWIND INSTRUCTIONS SEE WI-09-10-8.
4. WIRE RANGE: #18-#14 AWG.
5. INSULATION DIAMETER RANGE: ϕ .120- ϕ .175.

P/C	DESCRIPTION (4)	MAT'L	REWIND		
09532	PPB817F2-A-HB	NOTE 1	NO	X	X
09878	PPB817F2-ARC-THB	NOTE 2	YES	X	X
09879	PPB817F2-ARC-HB	NOTE 1	YES	X	X
09881	PPB817F2-A-THB	NOTE 2	NO	X	X

Rev.	Description of Change/SCN#	Date
1	TRANSFER FROM CP TO EP	10-26-04
2	SCN# 102918 SCJ	4-6-05
3	PCA# 000044 JMR	5-8-08
4	ECR# 816 SCJ	11-2-11
5	ECR# 6553 SMK	9-3-21
6	ECR# 6811 SCJ	4/20/22



DIRECTION EXITING TOOL EARS DOWN, TO THE BACK
SEE NOTE 3

UNCONTROLLED COPY			
 THIRD ANGLE PROJECTION TOLERANCES UNLESS OTHERWISE SPECIFIED INCHES: .XX - \pm .030 .XXX - \pm .015 ANGLES - \pm 5°	TOOL NO. 0857	Title: POLARIZED BLADE	
	DO NOT SCALE DWG.	Drawn By: C. O'REILLY	Date: 7/16/03
	ETCO Incorporated Engineered Products 25 Bellows Street Warwick, R.I. 02888 Phone: (401)467-2400 FAX: (401)467-9230 www.ETCO.com	Chk'd/App'd By:	Scale: 6X Size: C
Dwg. No.: PPB817F2			