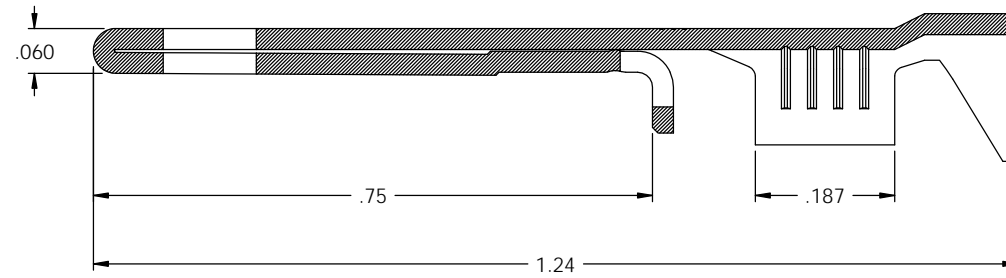


NOTES:

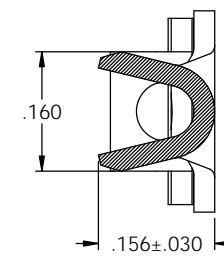
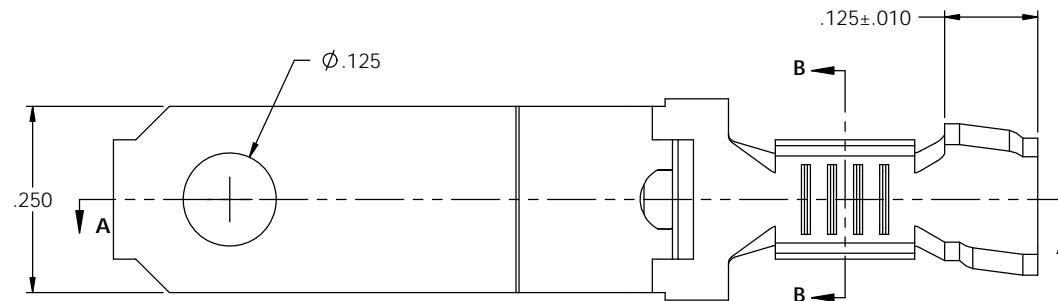
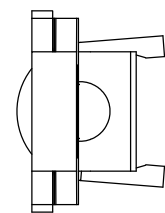
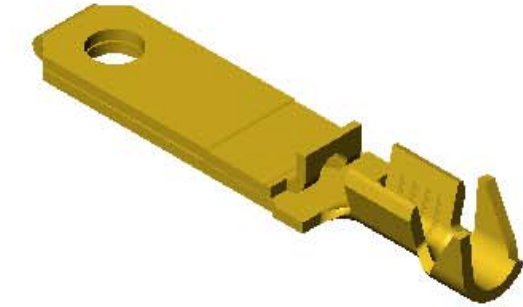
1. MATERIAL: .028 THICK C26000 BRASS; 1/2 HARD
ANNEALED TO TEMPER; PER ETCO METAL CODE 00097.
2. MATERIAL: .028 THICK C26000 PRETINNED BRASS; 1/2 HARD
ANNEALED TO TEMPER; PER ETCO METAL CODE 01705.
3. FOR REWIND INSTRUCTIONS SEE WI-09-10-8.
4. WIRE RANGE: #14-#18 AWG.
5. INSULATION DIAMETER RANGE: ϕ .120- ϕ .175.

| P/C | DESCRIPTION (3) | MAT'L | REWIND | RA | CS |
|-------|-----------------|--------|--------|----|----|
| 09905 | PPBF-ARB-HB | NOTE 1 | YES | X | X |
| 09914 | PPBF-D-HB | NOTE 1 | NO | X | X |
| 09916 | PPBF-ARC-HB | NOTE 1 | YES | X | X |
| 09917 | PPBF-A-HB | NOTE 1 | NO | X | X |
| 09923 | PPBF-ARC-THB | NOTE 2 | YES | X | X |

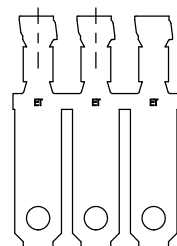
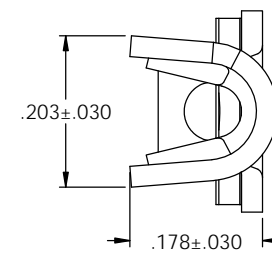
| Rev. | Description of Change/ SCN# | Date |
|------|-----------------------------|----------|
| 1 | TRANSFER FROM CP TO EP | 10-26-04 |
| 2 | SCN# 102918 SCJ | 4-5-05 |
| 3 | ECR# 816 SCJ | 11-2-11 |
| 4 | ECR# 4215 SCJ | 5/17/16 |



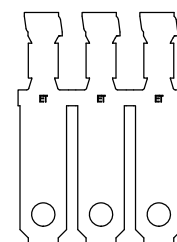
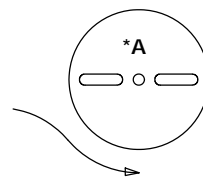
SECTION A-A



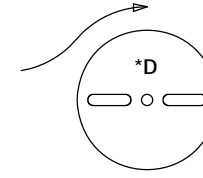
SECTION B-B



DIRECTION EXITING TOOL
EARS DOWN, TO THE BACK
SEE NOTE 3



DIRECTION EXITING TOOL
EARS DOWN, TO THE BACK
SEE NOTE 3



| UNCONTROLLED COPY | | | | | |
|--|----------|--|-----------------------|-----------------|-----------|
| THIRD ANGLE PROJECTION | TOOL NO. | Title: NON-POLARIZED BLADE | | | |
| | 0961 (4) | DO NOT SCALE DWG. | Drawn By: C. O'REILLY | Date: 7/16/03 | |
| TOLERANCES UNLESS OTHERWISE SPECIFIED | ETCO | ETCO Incorporated Engineered Products 25 Bellows Street Warwick, RI 02888 Phone: (401) 467-2400 Fax: (401) 467-9230 www.ETCO.com | | Chk'd/App'd By: | Scale: 6X |
| INCHES: .XX - \pm .030 .XXX - \pm .015 ANGLES: $\pm 5^\circ$ | | Dwg. No.: PPBF cust | | Size: C | |