
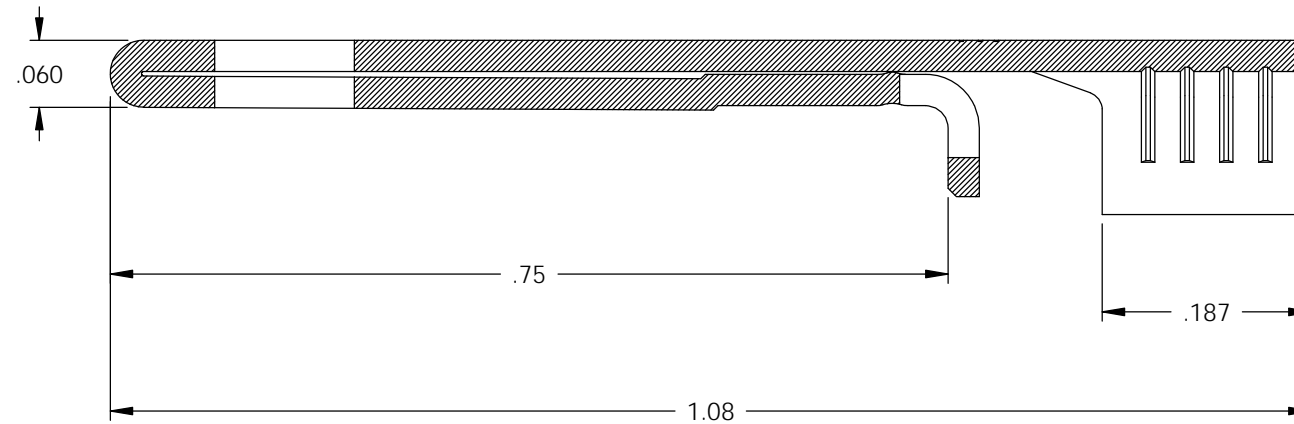


NOTES:

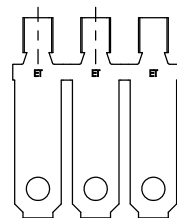
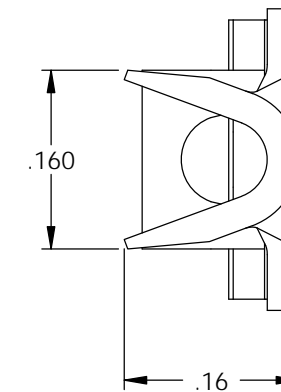
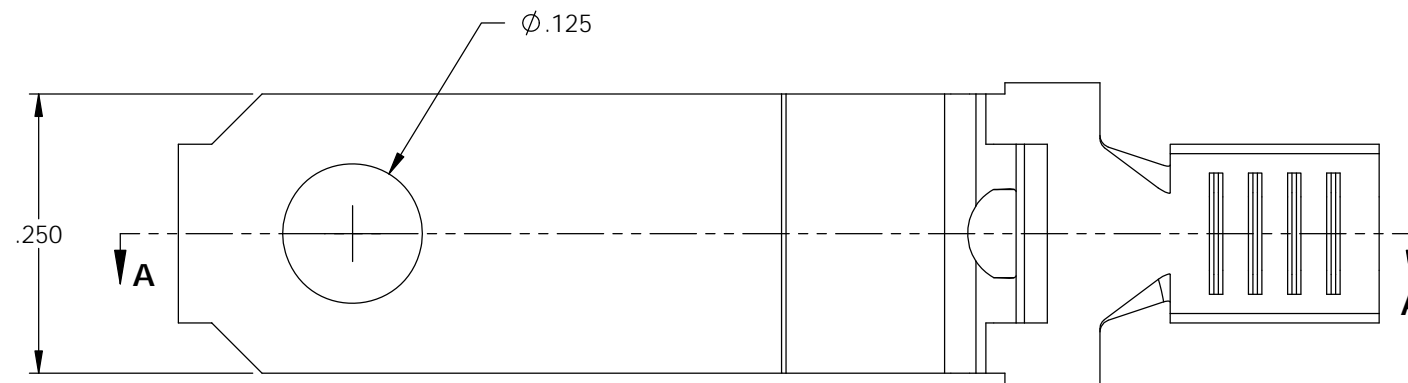
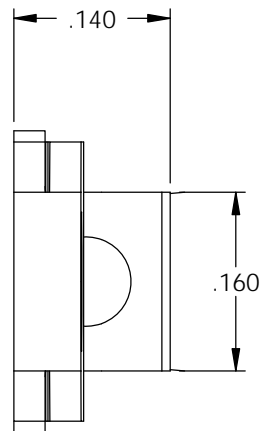
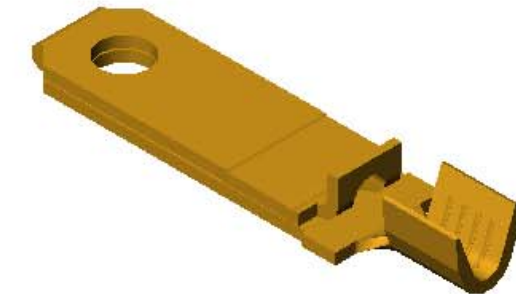
1. MATERIAL: .028 THICK C26000 BRASS; 1/2 HARD  
ANNEALED TO TEMPER; PER ETCO METAL CODE 00714.
2. FOR REWIND INSTRUCTIONS SEE PR-3-07.
3. WIRE RANGE: #140#18 AWG.

| P/C   | DESCRIPTION (2) | MAT'L  | REWIND |  |
|-------|-----------------|--------|--------|---|
| 14113 | PPBF1-D-HB      | NOTE 1 | NO     | X   |
| 14209 | PPBF1-DRC-HB    | NOTE 1 | YES    | X   |

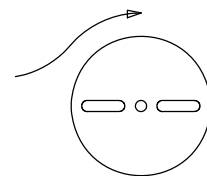
| Rev. | Description of Change/ SCN# | Date    |
|------|-----------------------------|---------|
| 1    | TRANSFERED FROM CP SCJ      | 8-28-08 |
| 2    | ECR# 816 SCJ                | 11-2-11 |





SECTION A-A  
SCALE 6 : 1



DIRECTION EXITING TOOL  
EARS DOWN, TO THE BACK  
SEE NOTE 2



# UNCONTROLLED COPY

|  |   |                                      |                     |               |
|--|---|--------------------------------------|---------------------|---------------|
| <br>THIRD ANGLE PROJECTION<br>TOLERANCES UNLESS OTHERWISE SPECIFIED<br>INCHES: .XX - ±.030<br>.XXX - ±.015<br>ANGLES: ±5° | TOOL NO.<br><b>0857</b>   | Title:<br><b>NON-POLARIZED BLADE</b> |                     |               |
|  |  | DO NOT SCALE DWG.                    | Drawn By: S.JOHNSON | Date: 8-28-08 |
| ETCO Incorporated<br>Engineered Products<br>25 Bellows Street<br>Warwick, RI 02888<br>Phone: (401) 467-2400<br>Fax: (401) 467-9230<br>www.ETCO.com   |   | Chk'd/App'd By:                      | Scale:<br>6X        | Size<br>B     |
| Dwg. No.:  |   |                                      | <b>PPBF1 cust</b>   |               |