

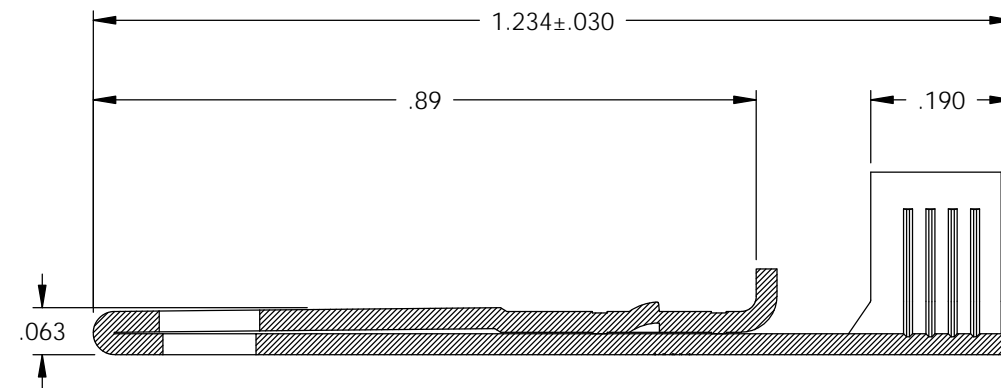
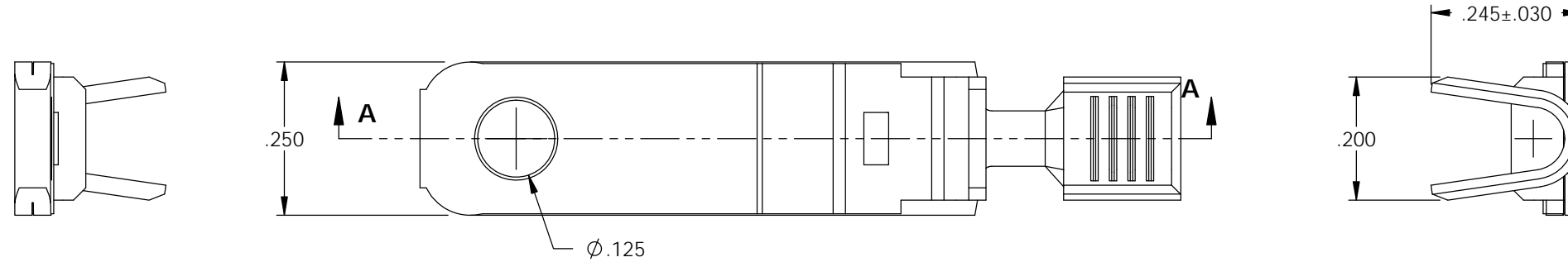


NOTES:

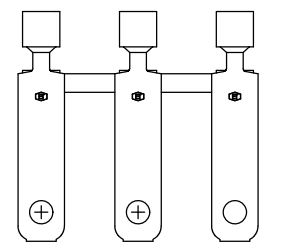
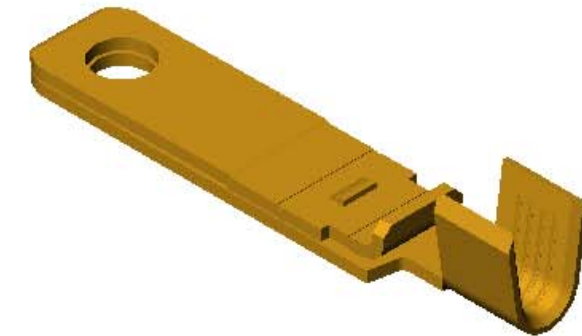
1. MATERIAL: .028 THICK C26000 BRASS; 1/2 HARD  
ANNEALED TO TEMPER  
PER ETCO METAL CODE 00746.
2. PARTS MAY BE COATED WITH A LIGHT FILM OF LUBRICATION USED  
IN THE MANUFACTURING PROCESS.
3. WIRE RANGE: # 10-#12 AWG.

P/C	DESCRIPTION (3)	MAT'L		
14276	PPBF14-A-HB	NOTE 1	X	X

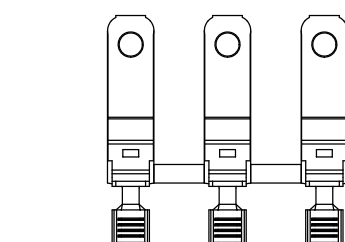
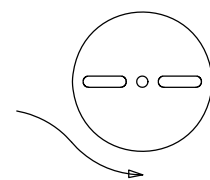
Rev.	Description of Change/ SCN#	Date
1	TRANSFER FROM CP TO EP	10-29-04
2	SCN# 102918 SCJ	4-5-05
3	ECR# 816 SCJ	11-3-11



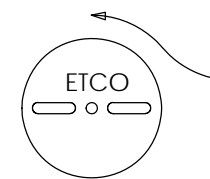
SECTION A-A



DIRECTION EXITING TOOL  
EARS DOWN, TO THE REAR

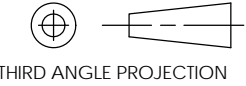



DIRECTION TOWARDS APPLICATOR  
EARS UP, TO THE FRONT



THIS PRINT IS THE PROPERTY OF ETCO INCORPORATED. NO PART OF THIS DESIGN MAY BE USED IN ANY WAY WITHOUT WRITTEN CONSENT FROM ETCO INCORPORATED.

# UNCONTROLLED COPY

 THIRD ANGLE PROJECTION  TOLERANCES UNLESS OTHERWISE SPECIFIED INCHES: .XX - ±.030 .XXX - ±.015  ANGLES - ±5°	TOOL NO. <b>0851</b>	Title: <b>NON-POLARIZED SPACE BLADE</b>		
		DO NOT SCALE DWG. ETCO Incorporated Engineered Products 25 Bellows Street Warwick, R.I. 02888 Phone: (401)467-2400 FAX: (401)467-9230 www.ETCO.com	Drawn By: <b>S.JOHNSON</b> Chk'd/App'd By:	Date: <b>10-29-04</b> Scale: <b>4X</b> Size: <b>B</b>
		Dwg. No.: <b>PPBF14</b>		