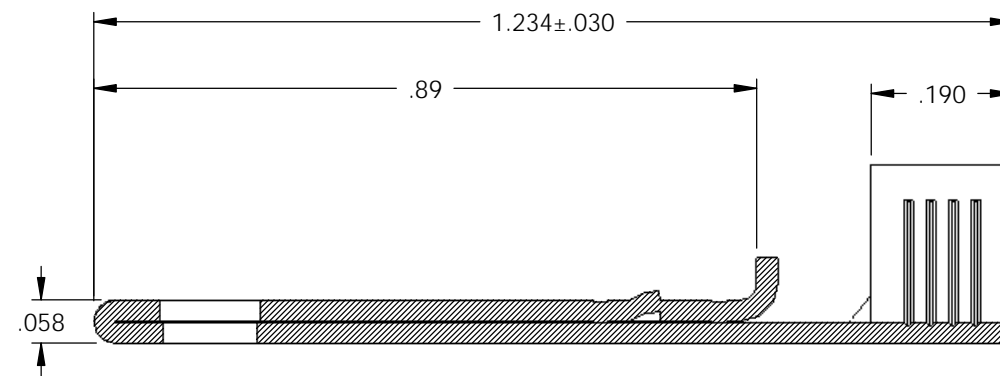
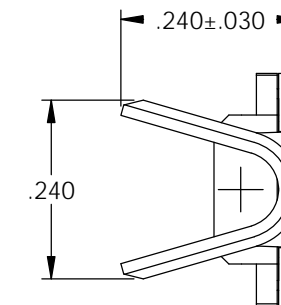
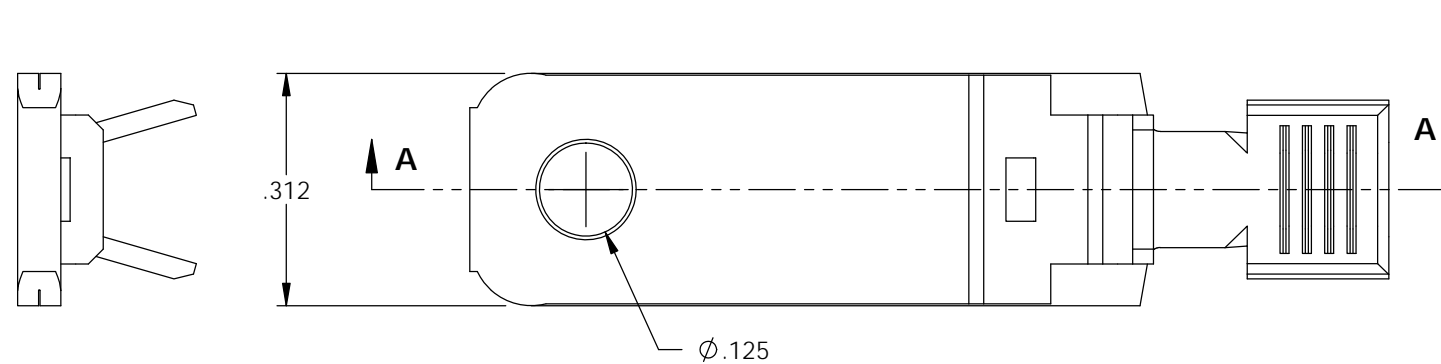


NOTES:

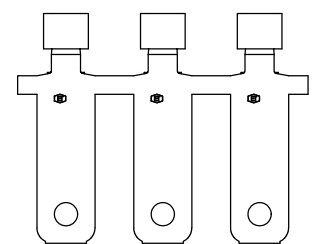
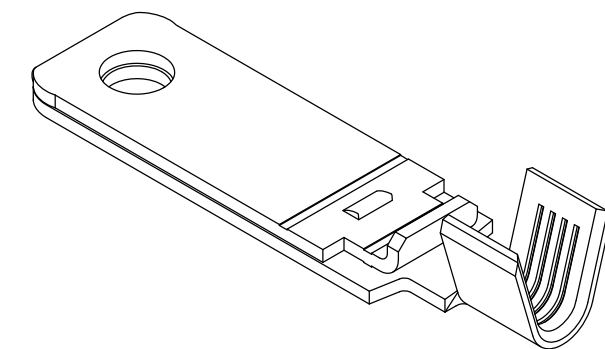
1. MATERIAL: .028 THICK C26000 BRASS; 1/2 HARD
ANNEALED TO TEMPER
PER ETCO METAL CODE 00746.
2. PARTS MAY BE COATED WITH A LIGHT FILM OF LUBRICATION USED
IN THE MANUFACTURING PROCESS.
3. WIRE RANGE: # 10-#12 AWG.

P/C	DESCRIPTION (1)	MAT'L
14203	PPBF15-A-HB	NOTE 1

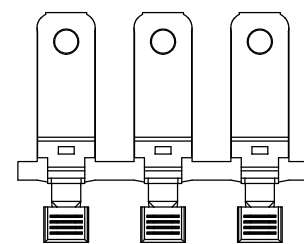
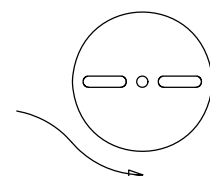
Rev.	Description of Change/ SCN#	Date
-	SCN# 140155 SCJ	3-29-07
1	ECR# 816 SCJ	11-3-11



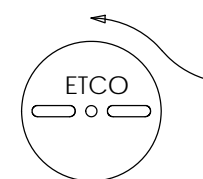
SECTION A-A



DIRECTION EXITING TOOL,
EARS DOWN, TO THE BACK



DIRECTION TOWARD APPLICATOR,
EARS UP, TO THE FRONT



UNCONTROLLED COPY

<p>THIRD ANGLE PROJECTION TOLERANCES UNLESS OTHERWISE SPECIFIED INCHES: .XX - ±.030 .XXX - ±.015 ANGLES: ±5°</p>	<p>TOOL NO. 0851</p>	<p>Title: NON-POLARIZED SPACE BLADE</p>		
		<p>DO NOT SCALE DWG.</p>	<p>Drawn By: S.JOHNSON</p>	<p>Date: 3-28-07</p>
<p>ETCO Incorporated Engineered Products 25 Bellows Street Warwick, RI 02888 Phone: (401) 467-2400 Fax: (401) 467-9230 www.ETCO.com</p>		<p>Chk'd/App'd By:</p>	<p>Scale: 4X</p>	<p>Size B</p>
<p>Dwg. No.: PPBF15 cust</p>				