
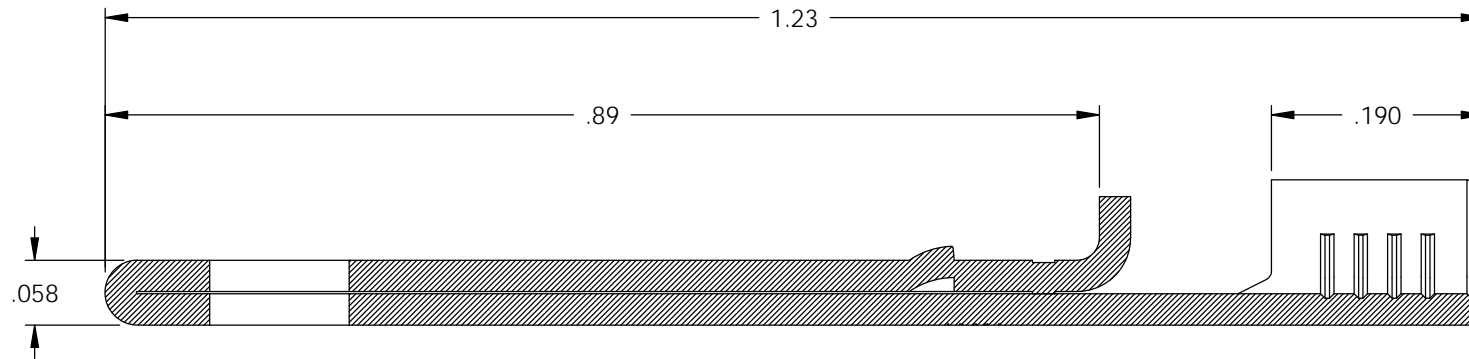
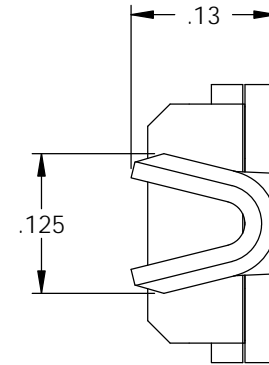
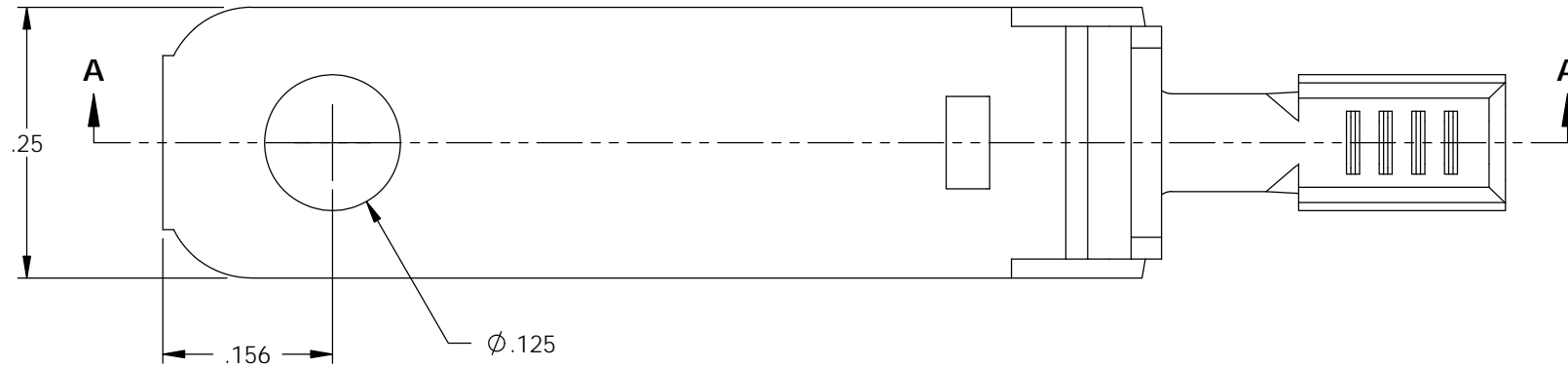
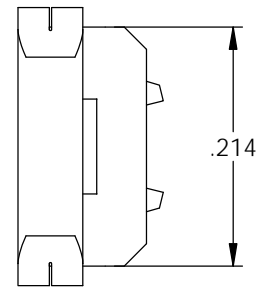


NOTES:

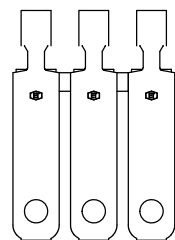
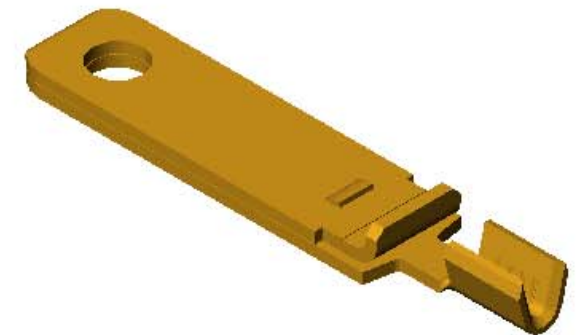
1. MATERIAL: .028 THICK C26000 BRASS; 1/2 HARD  
ANNEALED TO TEMPER  
PER ETCO METAL CODE 00087.
2. PARTS MAY BE COATED WITH A LIGHT FILM OF LUBRICATION USED  
IN THE MANUFACTURING PROCESS.
3. WIRE RANGE: # 18-#20 AWG.

P/C	DESCRIPTION (2)	MAT'L	
14269	PPBF18-A-HB	NOTE 1	X

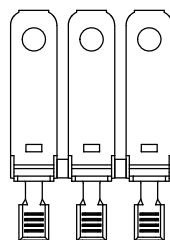
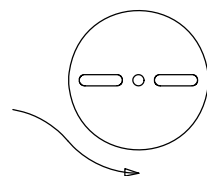
Rev.	Description of Change/ SCN#	Date
1	TRANSFERED FROM CP SCJ	9-2-08
2	ECR# 816 SCJ	11-2-11



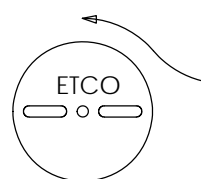
SECTION A-A  
SCALE 6 : 1





DIRECTION EXITING TOOL,  
EARS DOWN, TO THE BACK



DIRECTION TOWRD APPLICATOR,  
FROM RIGHT,  
EARS UP, TO THE FRONT



# UNCONTROLLED COPY

 THIRD ANGLE PROJECTION TOLERANCES UNLESS OTHERWISE SPECIFIED INCHES: .XX - ±.030 .XXX - ±.015 ANGLES: ±5°	TOOL NO. <b>0853</b>	Title: <b>NON-POLARIZED SPACE BLADE</b>		
		DO NOT SCALE DWG.	Drawn By: S.JOHNSON	Date: 9-2-08
ETCO Incorporated Engineered Products 25 Bellows Street Warwick, RI 02888 Phone: (401) 467-2400 Fax: (401) 467-9230 www.ETCO.com		Chk'd/App'd By:	Scale: 6X	Size B
Dwg. No.:			<b>PPBF18 cust</b>	