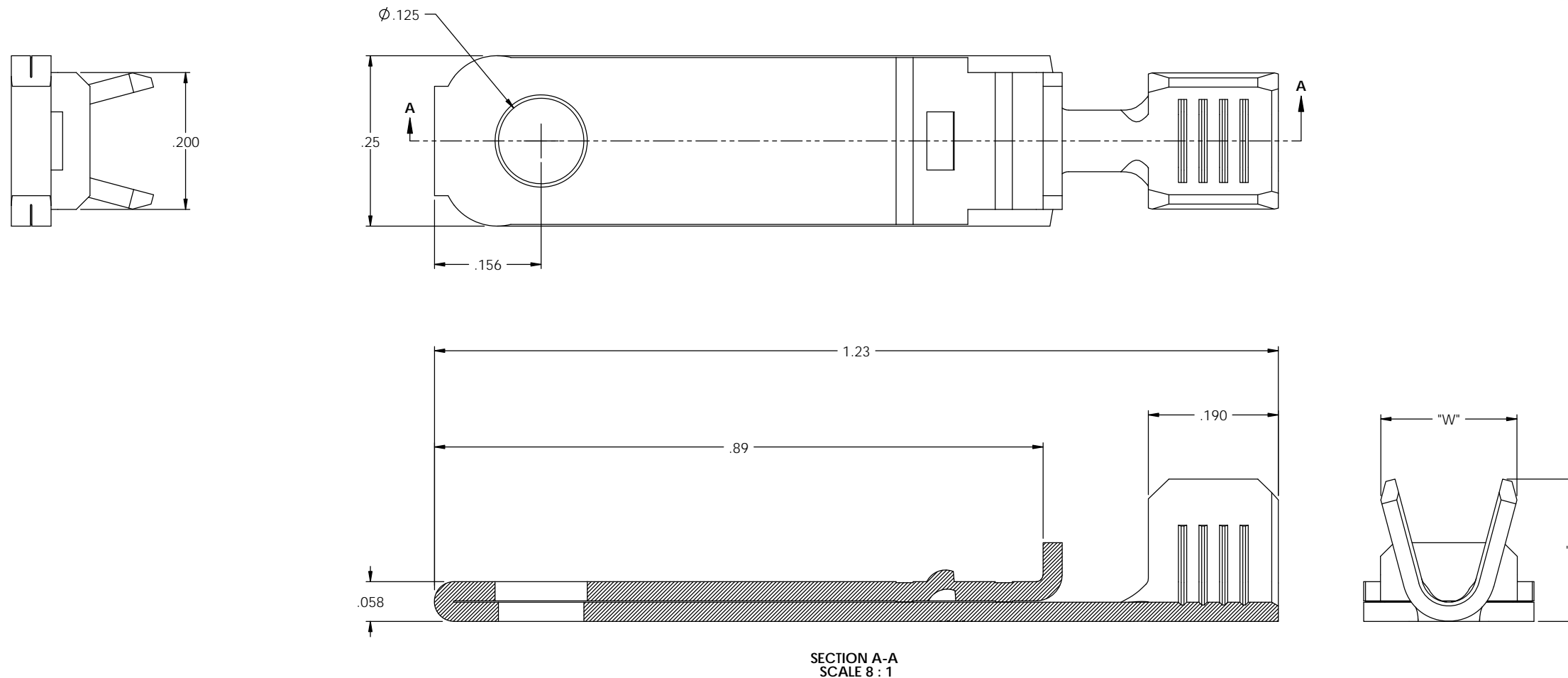
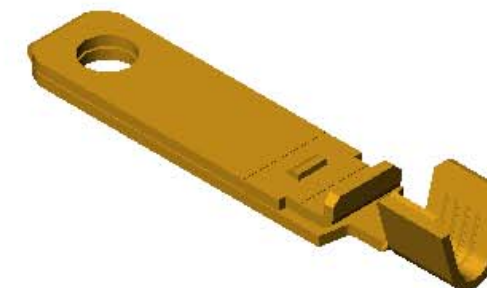


NOTES:

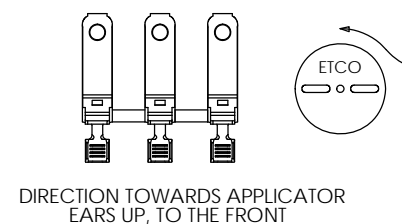
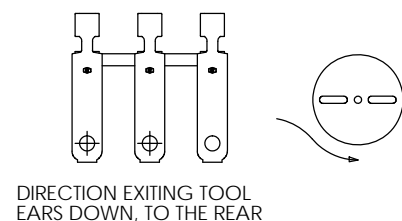
1. MATERIAL: .028 THICK C26000 BRASS; 1/2 HARD ANNEALED TO TEMPER PER ETCO METAL CODE 00746.
2. .057/.060 THICKNESS DIMENSION MUST BE MAINTAINED OVER .100 MINIMUM DIMENSION.
3. RIB DEPTH TO BE ADJUSTED TO MAINTAIN .057/.060 DIMENSION AND TO BE LOCATED APPROXIMATELY AS SHOWN.
4. PARTS MAY BE COATED WITH A LIGHT FILM OF LUBRICATION USED IN THE MANUFACTURING PROCESS.

| P/C | DESCRIPTION (2) | WIRE RANGE | "H" | "W" | MAT'L |
|-------|-----------------|------------|-----|------|--------|
| 14220 | PPBF20-12-A-HB | 12-14 AWG | .21 | .199 | NOTE 1 |
| 14221 | PPBF20-14-A-HB | 14-16 AWG | .19 | .176 | NOTE 1 |
| 14222 | PPBF20-16-A-HB | 16-18 AWG | .17 | .154 | NOTE 1 |

| Rev. | Description of Change/ SCN# | Date |
|------|-----------------------------|---------|
| 1 | TRANSFERED FROM CP SCJ | 9-2-08 |
| 2 | ECR# 816 SCJ | 11-3-11 |



SECTION A-A
SCALE 8 : 1



| UNCONTROLLED COPY | | | | | |
|--|--|--|---------------------|--------------|-----------------------|
| THIRD ANGLE PROJECTION | TOOL NO. | Title: NON-POLARIZED SPACE BLADE; GBBA | | | |
| | 0851 | DO NOT SCALE DWG. | Drawn By: S.JOHNSON | Date: 9-2-08 | |
| TOLERANCES UNLESS OTHERWISE SPECIFIED INCHES: XX - $\pm .030$.XXX - $\pm .015$ ANGLES: $\pm 5^\circ$ | ETCO Incorporated Engineered Products 25 Bellows Street Warwick, RI 02888 Phone: (401) 467-2400 Fax: (401) 467-9230 www.ETCO.com | Chk'd/App'd By: | Scale: 8X | Size: C | Dwg. No.: PPBF20 cust |