

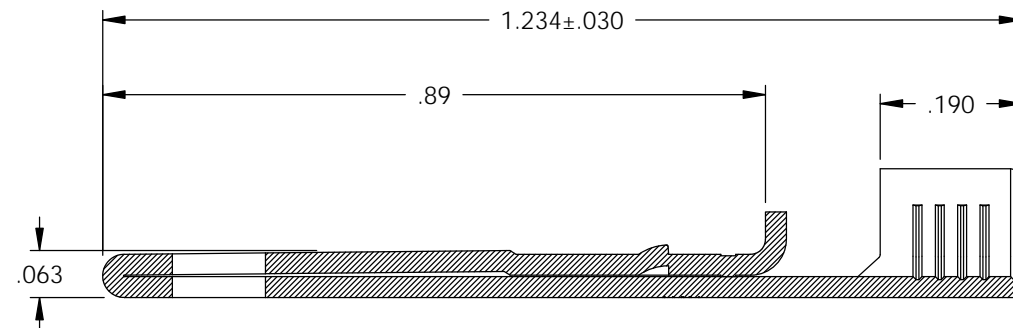
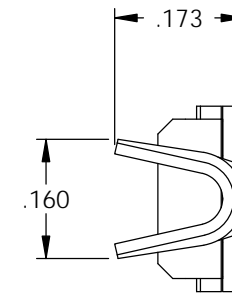
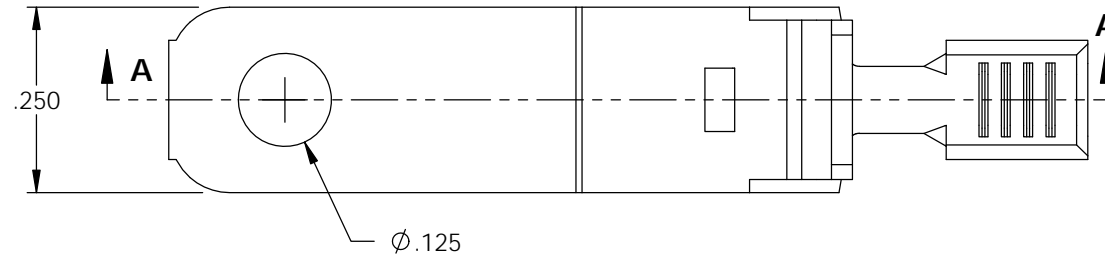
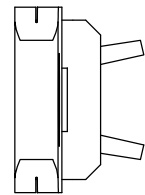


NOTES:

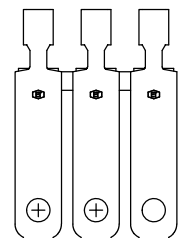
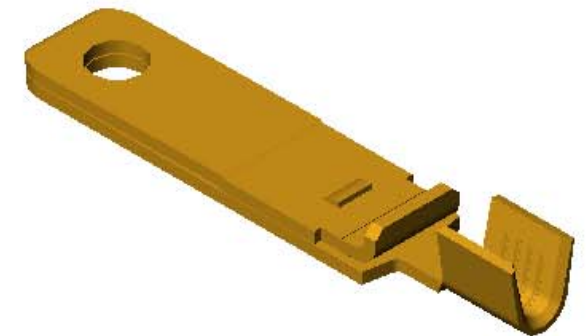
1. MATERIAL: .028 THICK C26000 BRASS; 1/2 HARD
ANNEALED TO TEMPER
PER ETCO METAL CODE 00087.
2. PARTS MAY BE COATED WITH A LIGHT FILM OF LUBRICATION USED
IN THE MANUFACTURING PROCESS.
3. WIRE RANGE: # 14-#18 AWG.

P/C	DESCRIPTION (4)	MAT'L		
14172	PPBF5-A-HB	NOTE 1	X	X

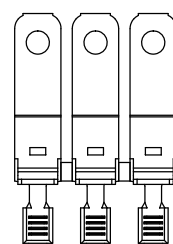
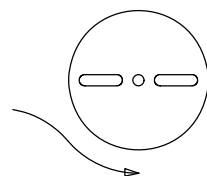
Rev.	Description of Change/ SCN#	Date
1	TRANSFER FROM CP TO EP	10-29-04
2	SCN# 102918 SCJ	4-5-05
3	SCN# 103169 SCJ	4-7-06
4	ECR# 816 SCJ	11-2-11
5	ECR# 1264 SCJ	4/4/12



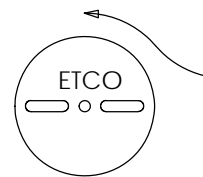
SECTION A-A



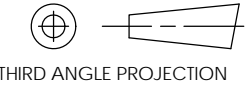

DIRECTION EXITING TOOL
EARS DOWN, TO THE REAR



DIRECTION TOWARDS APPLICATOR
EARS UP, TO THE FRONT



UNCONTROLLED COPY

 THIRD ANGLE PROJECTION	TOOL NO. 0853	Title: NON-POLARIZED SPACE BLADE		
	TOLERANCES UNLESS OTHERWISE SPECIFIED INCHES: .XX - ±.030 .XXX - ±.015 ANGLES - ±5°		ETCO Incorporated Engineered Products 25 Bellows Street Warwick, R.I. 02888 Phone: (401)467-2400 FAX: (401)467-9230 www.ETCO.com	DO NOT SCALE DWG.
		Chk'd/App'd By:	Scale: 4X	Size: B
		Dwg. No.: PPBF5		