

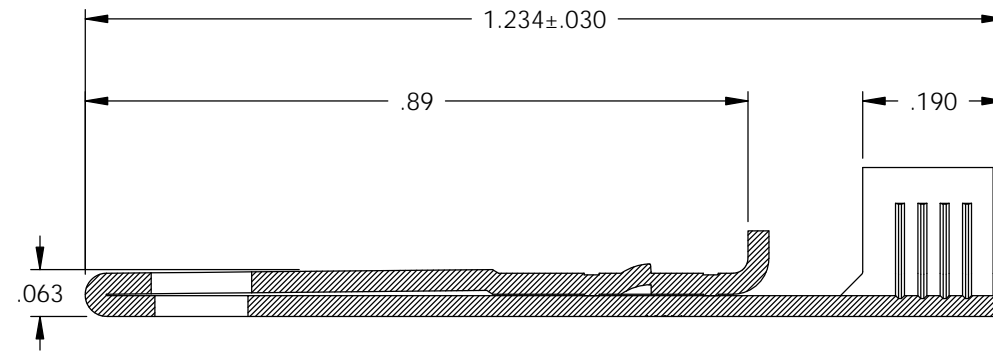
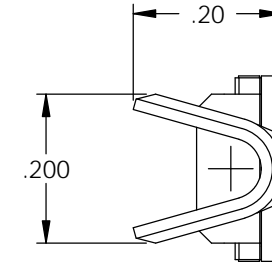
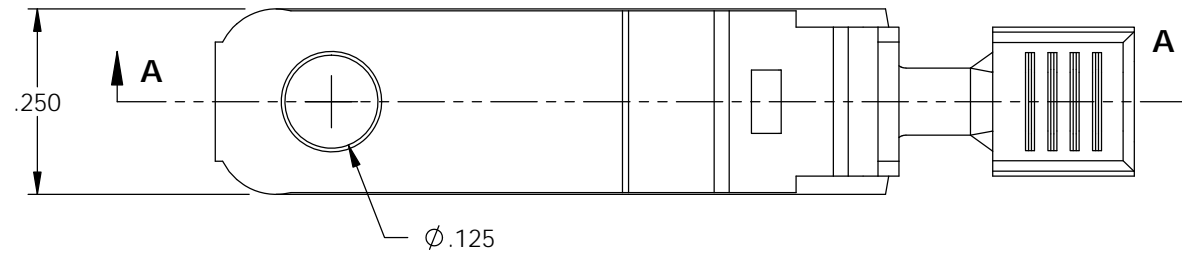
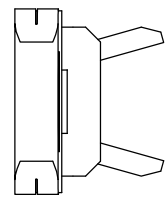


NOTES:

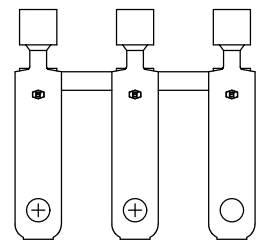
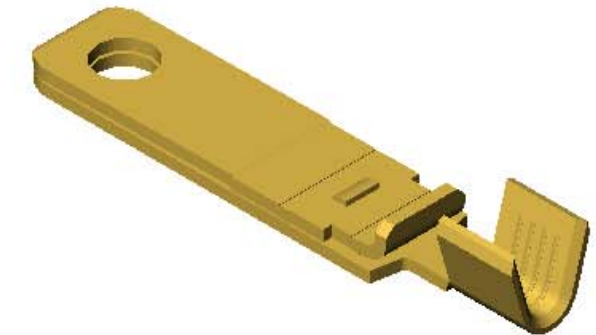
1. MATERIAL: .028 THICK C26000 BRASS; 1/2 HARD  
ANNEALED TO TEMPER  
PER ETCO METAL CODE 00746.
2. PARTS MAY BE COATED WITH A LIGHT FILM OF LUBRICATION USED  
IN THE MANUFACTURING PROCESS.
3. WIRE RANGE: # 12-#16 AWG.

P/C	DESCRIPTION (4)	MAT'L		
14207	PPBF6-A-HB	NOTE 1	X	X

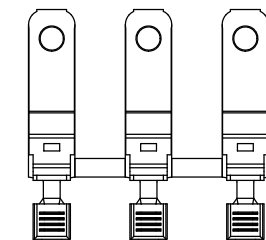
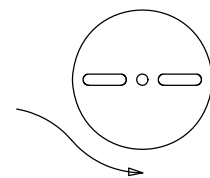
Rev.	Description of Change/ SCN#	Date
1	TRANSFER FROM CP TO EP	11-1-04
2	SCN# 102918 SCJ	4-5-05
3	SCN# 103167 SCJ	4-10-06
4	ECR# 816 SCJ	11-3-11
5	ECR# 1264 SCJ	4/4/12



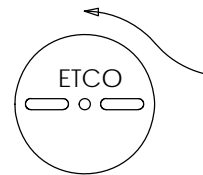
SECTION A-A



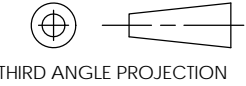

DIRECTION EXITING TOOL  
EARS DOWN, TO THE REAR



DIRECTION TOWARDS APPLICATOR  
EARS UP, TO THE FRONT



# UNCONTROLLED COPY

 THIRD ANGLE PROJECTION	TOOL NO. <b>0851</b>	Title: <b>NON-POLARIZED SPACE BLADE</b>		
	TOLERANCES UNLESS OTHERWISE SPECIFIED INCHES: .XX - ±.030 .XXX - ±.015 ANGLES - ±5°		ETCO Incorporated Engineered Products 25 Bellows Street Warwick, R.I. 02888 Phone: (401)467-2400 FAX: (401)467-9230 www.ETCO.com	DO NOT SCALE DWG.
		Chk'd/App'd By:	Scale: <b>4X</b>	Size <b>B</b>
		Dwg. No.: <b>PPBF6</b>		