
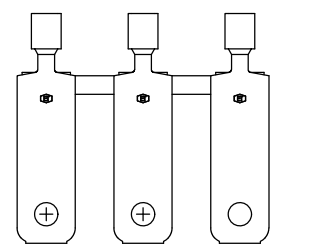
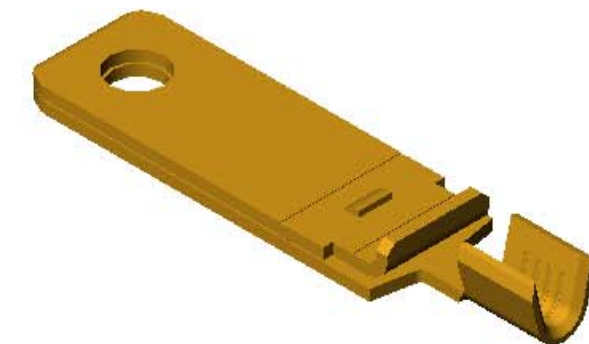
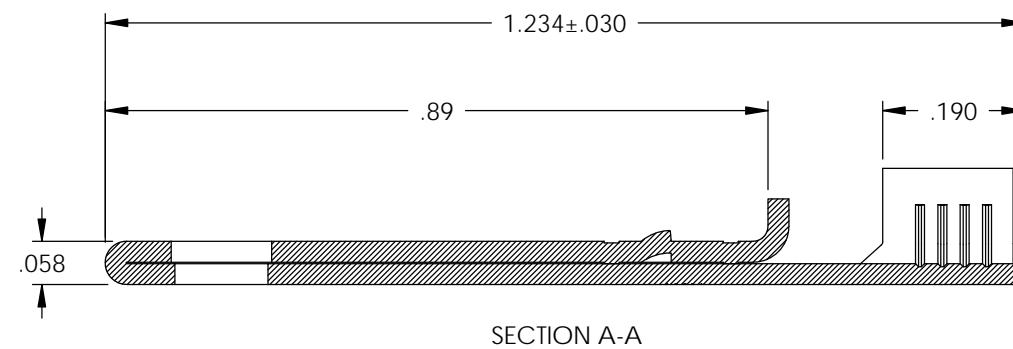
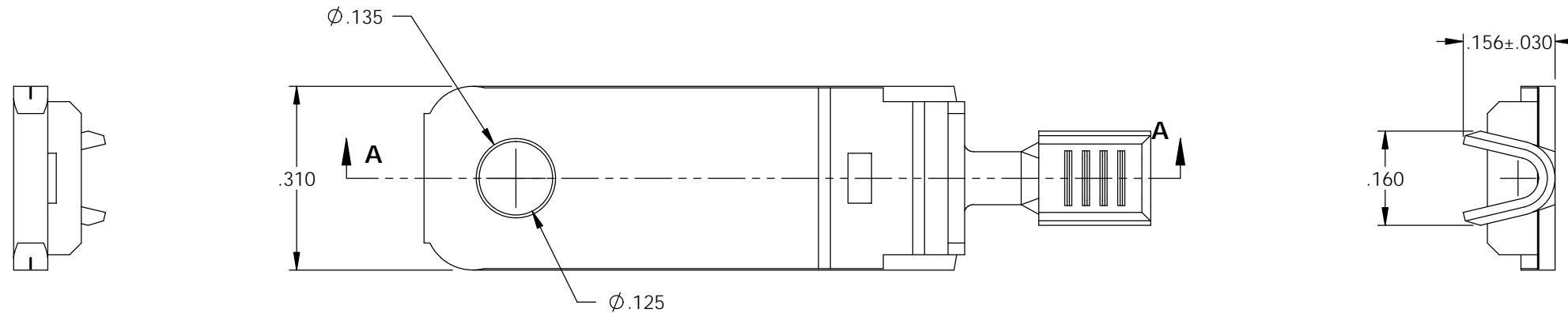


NOTES:

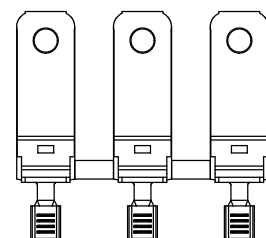
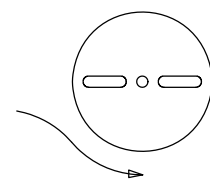
1. MATERIAL: .028 THICK C26000 BRASS; 1/2 HARD
ANNEALED TO TEMPER
PER ETCO METAL CODE 00746.
2. PARTS MAY BE COATED WITH A LIGHT FILM OF LUBRICATION USED
IN THE MANUFACTURING PROCESS.
3. WIRE RANGE: # 14-#18 AWG.

P/C	DESCRIPTION (2)	MAT'L	
14326	PPBF9*A-HB	NOTE 1	X

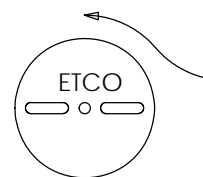
Rev.	Description of Change/ SCN#	Date
1	TRANSFER FROM CP TO EP	11-1-04
2	ECR# 816 SCJ	11-3-11



DIRECTION EXITING TOOL
EARS DOWN, TO THE REAR

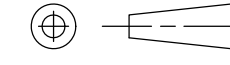



DIRECTION TOWARDS APPLICATOR
EARS UP, TO THE FRONT



THIS PRINT IS THE PROPERTY OF ETCO INCORPORATED. NO PART OF THIS DESIGN MAY BE USED IN ANY WAY WITHOUT WRITTEN CONSENT FROM ETCO INCORPORATED.

UNCONTROLLED COPY

 THIRD ANGLE PROJECTION TOLERANCES UNLESS OTHERWISE SPECIFIED INCHES: .XX - ±.030 .XXX - ±.015 ANGLES - ±5°	TOOL NO. 0851  ETCO	Title: NON-POLARIZED SPACE BLADE		
		DO NOT SCALE DWG.	Drawn By: S.JOHNSON Chk'd/App'd By:	Date: 11-1-04 Scale: 4X
		Dwg. No.: PPBF9		

ETCO Incorporated
Engineered Products
25 Bellows Street
Warwick, R.I. 02888
Phone: (401)467-2400
FAX: (401)467-9230
www.ETCO.com