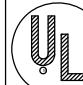

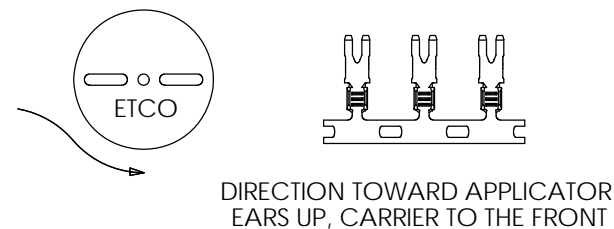
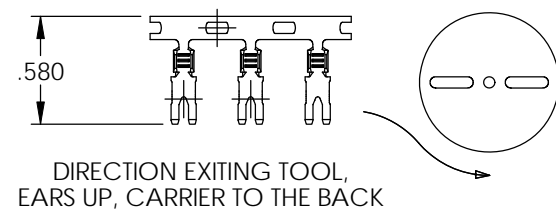
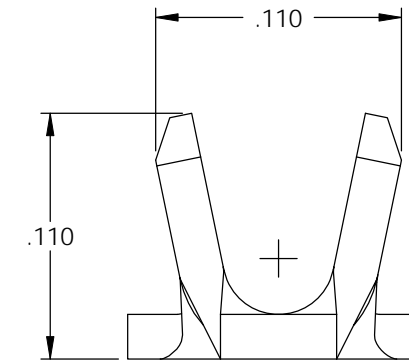
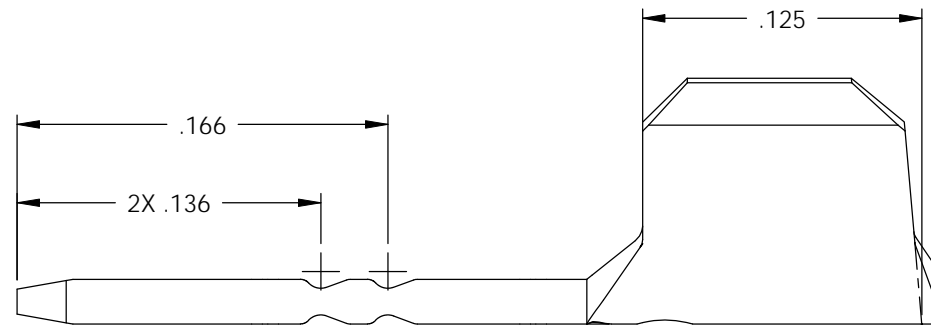
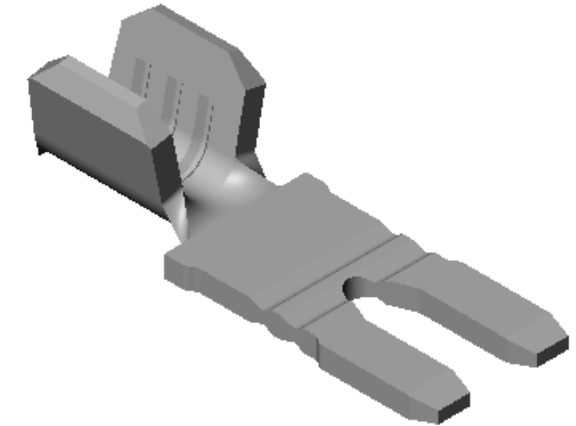
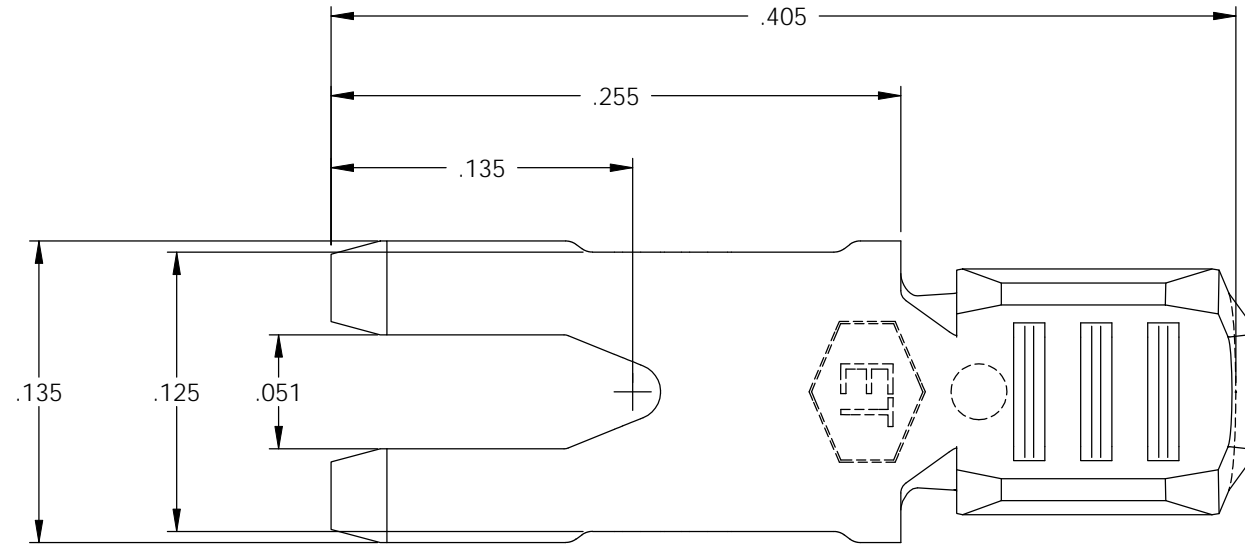


NOTE:



- 1.) MAT'L: .020 THK., BRASS, #2 TEMPER (HALF HARD), PER ETCO METAL CODE NO. 00372.
- 2.) MAT'L: .020 THK., PRE-TINNED BRASS, #2 TEMPER (HALF HARD), PER ETCO METAL CODE NO. 01431.
- 3.) MAT'L: .020 THK., POST-TINNED BRASS, #2 TEMPER (HALF HARD), PER ETCO METAL CODE NO. 00372.
- 4.) PARTS MAY BE COATED WITH A LIGHT FILM OF LUBRICATION USED IN THE MANUFACTURING PROCESS.
- 5.) .002 MAX BURR ALLOWED.
- 6.) WIRE RANGE: 22-18 AWG.

Rev.	Description of Change/ SCN#	Date
1	SCN# 102057 SCJ ORG.ENG.DWG.DATE: 1-26-93	11-13-02
2	SCN# 140252 SCJ	10-10-07
3	COMPLETED P/C LIST SCJ	7-24-08

P/C	DESCRIPTION	MAT'L		
11810	PT1-HB	NOTE 1	X	X
11814	PT1-HB-TAF	NOTE 3	X	X
11818	PT1-THB	NOTE 2	X	X



UNCONTROLLED COPY

 THIRD ANGLE PROJECTION TOLERANCES UNLESS OTHERWISE SPECIFIED INCHES: .XX - ±.030 .XXX - ±.015 ANGLES: ±5°	TOOL NO. 0638	Title: POKE TERMINAL		
		DO NOT SCALE DWG. ETCO Incorporated Engineered Products 25 Bellows Street Warwick, RI 02888 Phone: (401) 467-2400 Fax: (401) 467-9230 www.ETCO.com	Drawn By: S.JOHNSON Date: 11-13-02	Chk'd/App'd By: Scale: 12X Size: B
		Dwg. No.: PT1 cust		