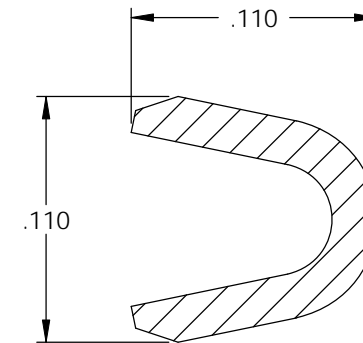
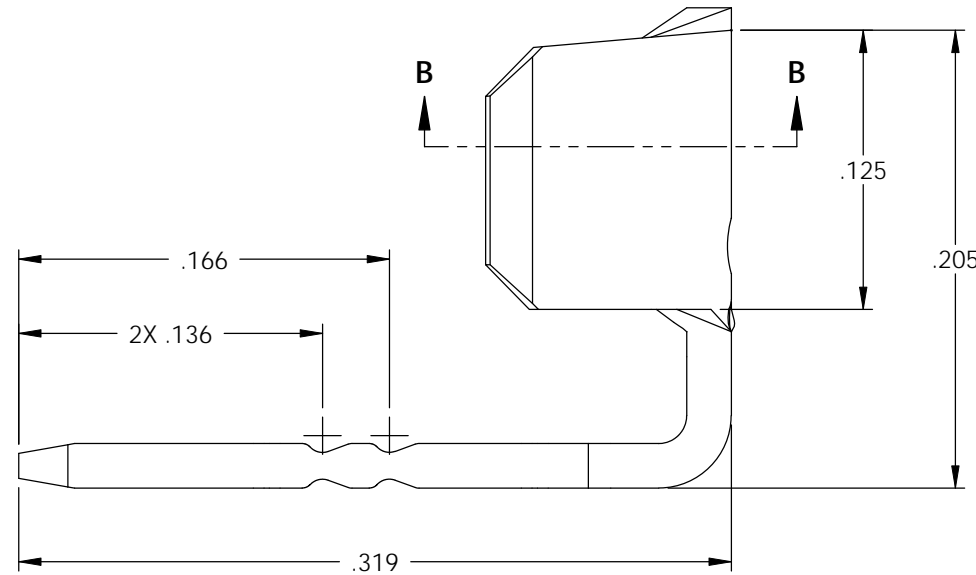
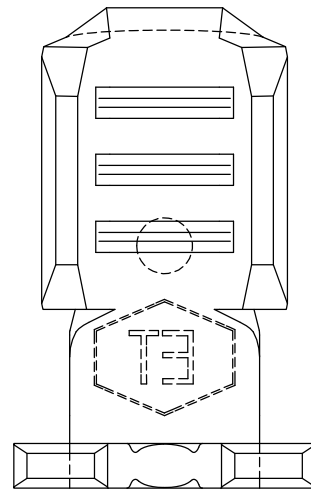
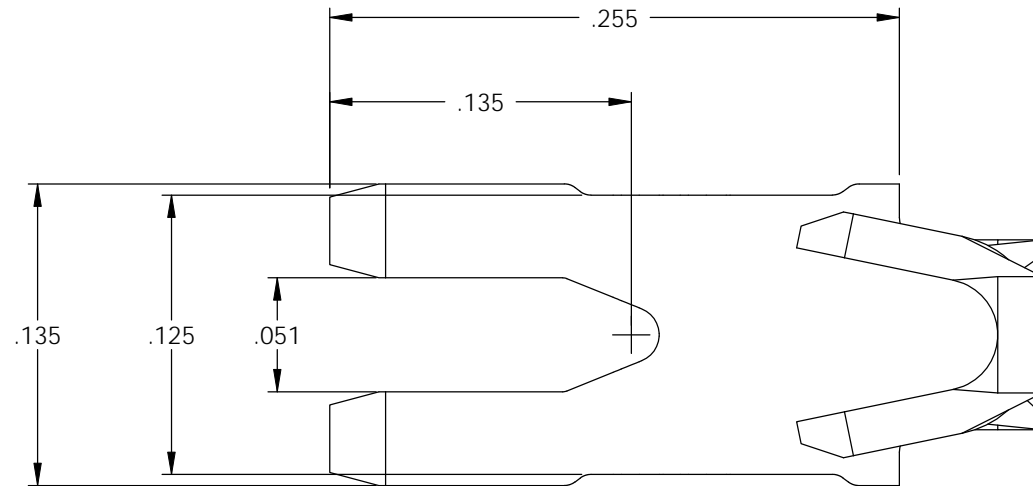
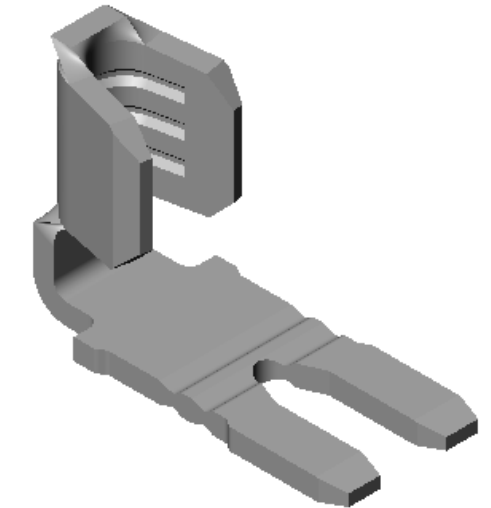


NOTE:

- 1.) MAT'L: .020 THK., BRASS, #2 TEMPER (HALF HARD), PER ETCO METAL CODE NO. 00372.
- 2.) MAT'L: .020 THK., PRE-TINNED BRASS, #2 TEMPER (HALF HARD), PER ETCO METAL CODE NO. 01431.
- 3.) MAT'L: .020 THK., POST-TINNED BRASS, #2 TEMPER (HALF HARD), PER ETCO METAL CODE NO. 00372.
- 4.) PARTS MAY BE COATED WITH A LIGHT FILM OF LUBRICATION USED IN THE MANUFACTURING PROCESS.
- 5.) .002 MAX BURR ALLOWED.
- 6.) WIRE RANGE: 22-18 AWG.

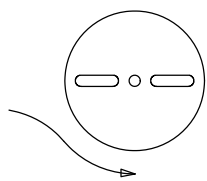
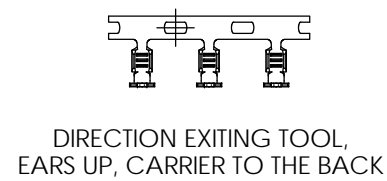


SECTION B-B
SCALE 12 : 1



P/C	DESCRIPTION	MAT'L	UL	SP
11812	PT3-HB	NOTE 1	X	X
11816	PT3-HB-TAF	NOTE 3	X	X
11820	PT3-THB	NOTE 2	X	X

Rev.	Description of Change/ SCN#	Date
1	SCN# 102057 SCJ ORG.ENG.DWG.DATE: 11-15-94	11-14-02
2	SCN# 140252 SCJ	10-10-07
3	COMPLETED P/C LIST SCJ	7-24-08



UNCONTROLLED COPY

<p>THIRD ANGLE PROJECTION TOLERANCES UNLESS OTHERWISE SPECIFIED INCHES: .XX - ±.030 .XXX - ±.015 ANGLES: ±5°</p>	<p>TOOL NO. 0638</p>	<p>Title: POKE TERMINAL</p>			
		<p>ETCO Incorporated Engineered Products 25 Bellows Street Warwick, RI 02888 Phone: (401) 467-2400 Fax: (401) 467-9230 www.ETCO.com</p>	<p>DO NOT SCALE DWG.</p>	<p>Drawn By: S.JOHNSON</p>	<p>Date: 11-14-02</p>
		<p>Chk'd/App'd By:</p>	<p>Scale: 12X</p>	<p>Size B</p>	<p>Dwg. No.: PT3 cust</p>