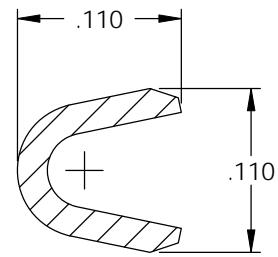


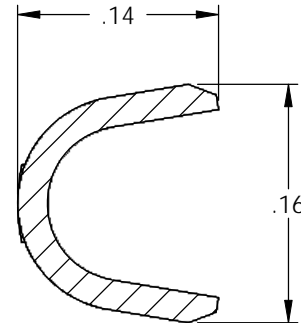
- NOTE:
 1.) MAT'L: .020 THK., BRASS,
 #2 TEMPER (HALF HARD),
 PER ETCO METAL CODE NO. 00405.
 2.) MAT'L: .020 THK., PRE-TINNED BRASS,
 #2 TEMPER (HALF HARD),
 PER ETCO METAL CODE NO. 01465.
 3.) PARTS MAY BE COATED WITH A LIGHT
 FILM OF LUBRICATION USED IN THE
 MANUFACTURING PROCESS.
 4.) .002 MAX BURR ALLOWED.
 5.) WIRE RANGE: 22-18 AWG.
 6.) INSUL RANGE: \varnothing .060-.100

P/C	DESCRIPTION	MAT'L
11826	PT6-HB	NOTE 1
11827	PT6-THB	NOTE 2

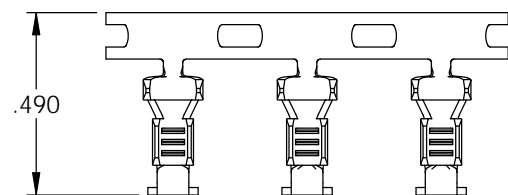
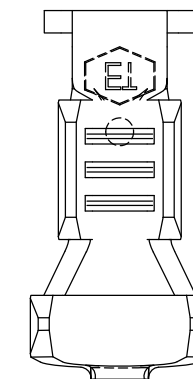
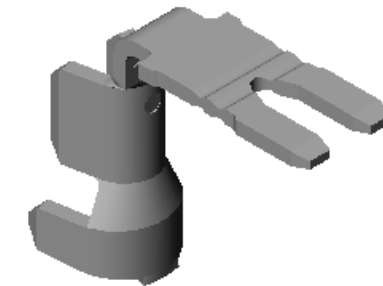
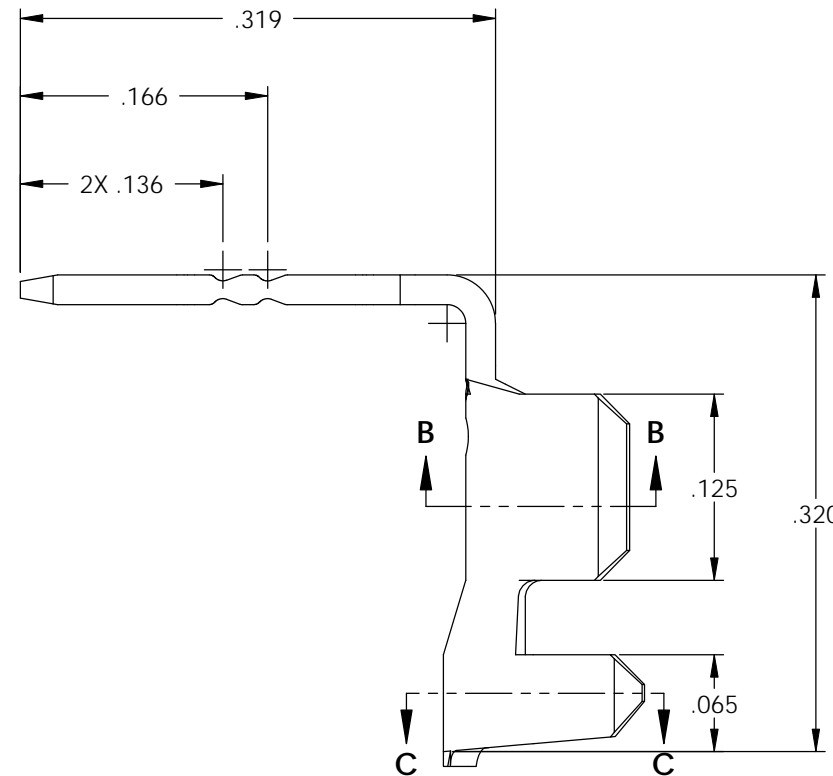
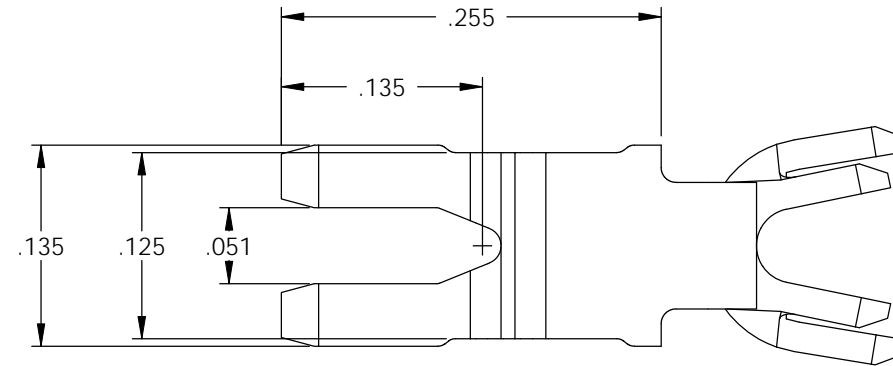
Rev.	Description of Change/ SCN#	Date
A	APPROVED FOR TOOLING SCJ	9-5-07



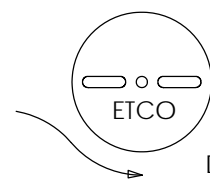
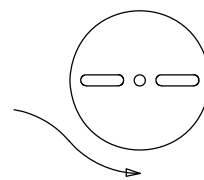
SECTION B-B
SCALE 8:1



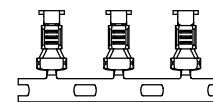
SECTION C-C
SCALE 8:1



SCALE 2:1
DIRECTION EXITING TOOL,
EARS UP, CARRIER TO THE BACK



DIRECTION TOWARD APPLICATOR,
EARS UP, CARRIER TO THE FRONT



UNCONTROLLED COPY

<p>THIRD ANGLE PROJECTION TOLERANCES UNLESS OTHERWISE SPECIFIED INCHES: .XX - \pm.030 .XXX - \pm.015 ANGLES: \pm5°</p>	<p>TOOL NO. 0638</p>	<p>Title: POKE TERMINAL</p>		
		<p>DO NOT SCALE DWG.</p>	<p>Drawn By: S.JOHNSON</p>	<p>Date: 9-5-07</p>
<p>ETCO Incorporated Engineered Products 25 Bellows Street Warwick, RI 02888 Phone: (401) 467-2400 Fax: (401) 467-9230 www.ETCO.com</p>		<p>Chk'd/App'd By:</p>	<p>Scale: 8X</p>	<p>Size B</p>
		<p>Dwg. No.: PT6 cust</p>		