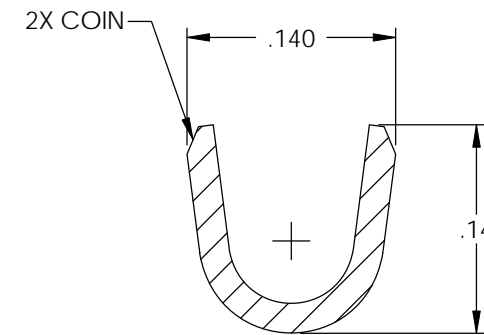
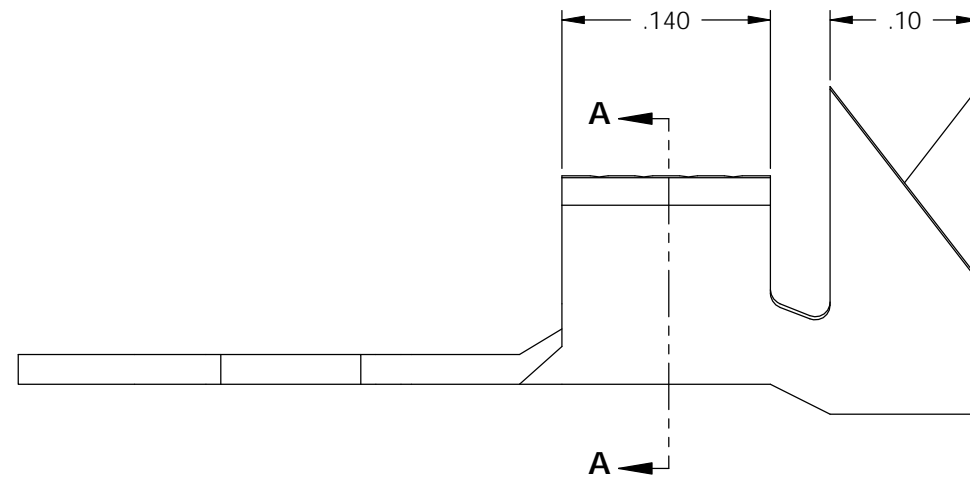
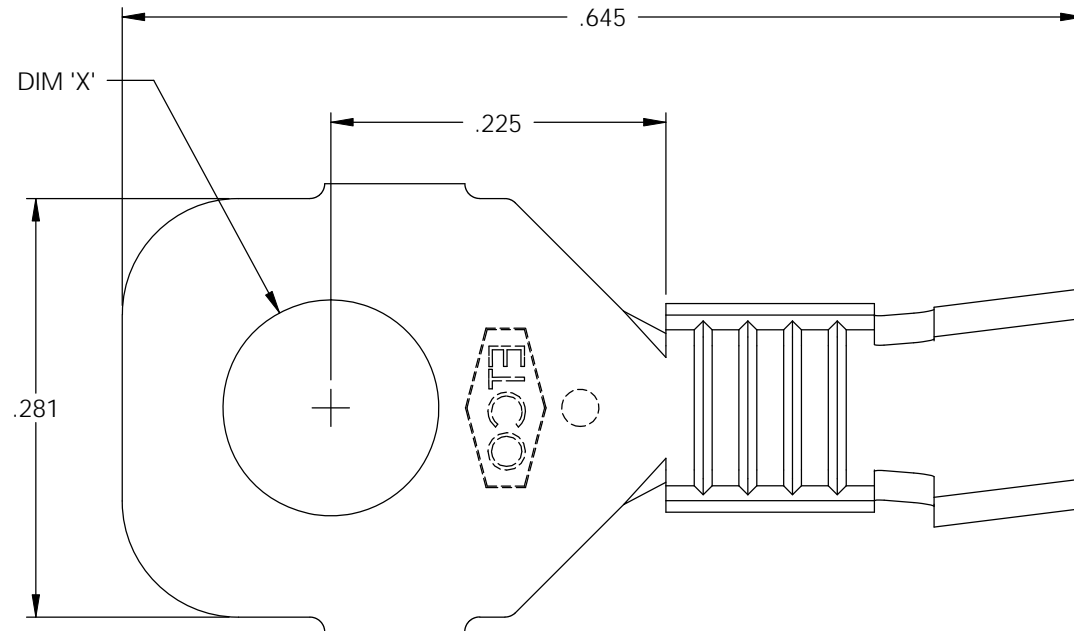
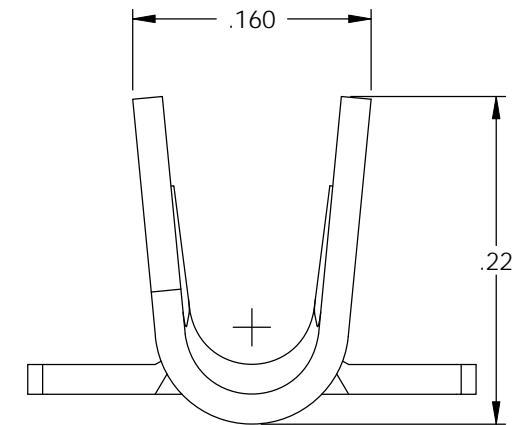


NOTE:

- 1.) MAT'L: .020 THK., BRASS, #2 TEMPER (HALF HARD), PER ETCO METAL CODE NO. 00330.
- 2.) MAT'L: .020 THK., PRE-TINNED BRASS, #2 TEMPER (HALF HARD), PER ETCO METAL CODE NO. 01410.
- 3.) MAT'L: .020 THK., PRE-NICKEL PLATED STEEL, #3 TEMPER (QUARTER HARD), PER ETCO METAL CODE NO. 03230.
- 4.) PARTS MAY BE COATED WITH A LIGHT FILM OF LUBRICATION USED IN THE MANUFACTURING PROCESS.
- 5.) WIRE RANGE: 20-16 AWG.
- 6.) INSUL RANGE: ϕ .075-.125

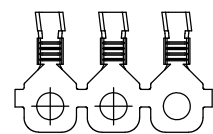
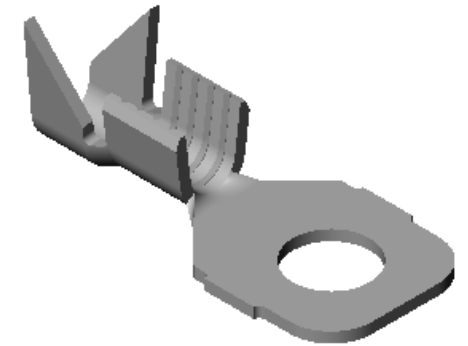


SECTION A-A
SCALE 8 : 1

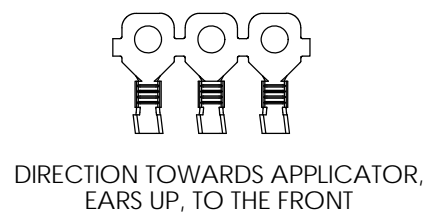
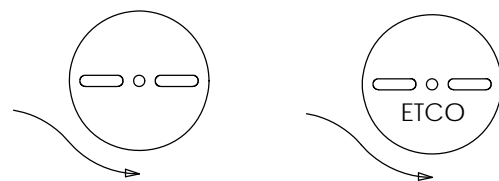


P/C	DESCRIPTION	DIM 'X'	UL	SP
00597	R121-4-THB	ϕ .119	X	X
00598	R121-4-HB	ϕ .119	X	X
00599	R121-104-THB	ϕ .104		
00604	R121-6-THB	ϕ .145	X	X
00605	R121-6-HB	ϕ .145	X	X
00606	R121-8-HB	ϕ .171	X	X
00607	R121-10-HB	ϕ .197	X	X
00608	R121-8-THB	ϕ .171	X	X
00609	R121-10-THB	ϕ .197	X	X
00612	R121-4-NPS	ϕ .119		

Rev.	Description of Change/ SCN#	Date
1	SCN# 102057 SCJ ORG.ENG.DWG.DATE: 10-29-91	11-4-02
2	SCN# 103197 SCJ	6-2-06
3	COMPLETED P/C LIST SCJ	7-23-08



DIRECTION EXITING TOOL,
EARS UP, TO THE BACK



DIRECTION TOWARDS APPLICATOR,
EARS UP, TO THE FRONT

UNCONTROLLED COPY

<p>THIRD ANGLE PROJECTION TOLERANCES UNLESS OTHERWISE SPECIFIED INCHES: .XX - \pm.030 .XXX - \pm.015 ANGLES: \pm5°</p>	TOOL NO. 0016	Title: RING TERMINAL		
		DO NOT SCALE DWG.	Drawn By: S.JOHNSON	Date: 11-4-02
ETCO Incorporated Engineered Products 25 Bellows Street Warwick, RI 02888 Phone: (401) 467-2400 Fax: (401) 467-9230 www.ETCO.com		Chk'd/App'd By:	Scale: 8X	Size B
		Dwg. No.: R121 cust		