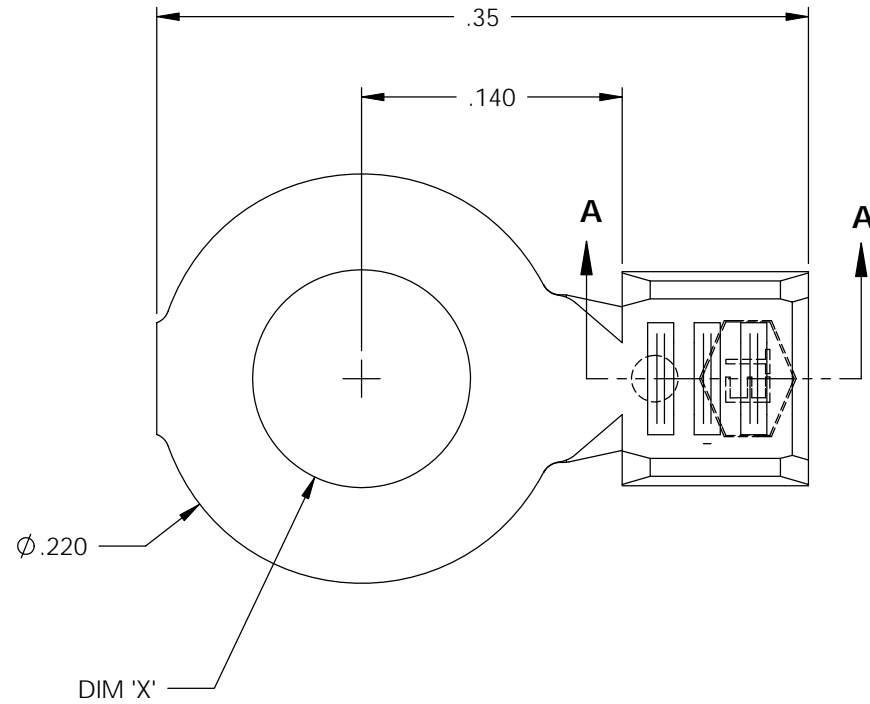


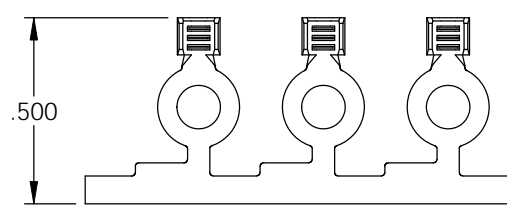
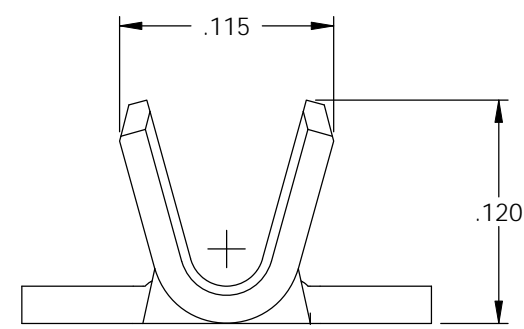
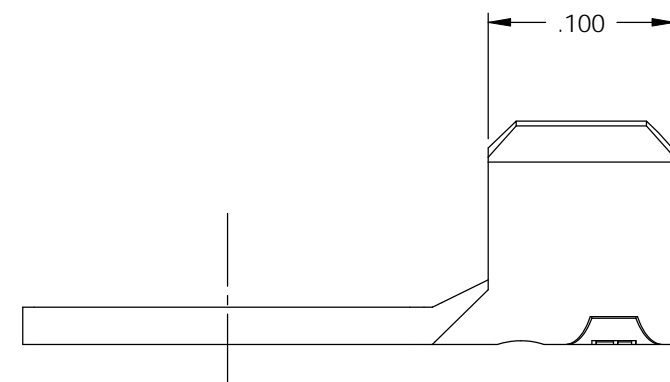
NOTE:

- 1.) MAT'L: .020 THK., BRASS, #2 TEMPER (HALF HARD), PER ETCO METAL CODE NO. 00280.
- 2.) MAT'L: .020 THK., PRE-TINNED BRASS, #2 TEMPER (HALF HARD), PER ETCO METAL CODE NO. 01350.
- 3.) PARTS MAY BE COATED WITH A LIGHT FILM OF LUBRICATION USED IN THE MANUFACTURING PROCESS.
- 4.) WIRE RANGE: 22-18 AWG.

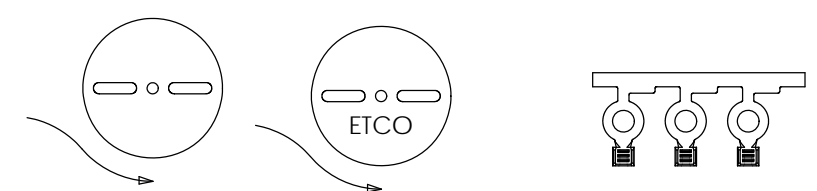


P/C	DESCRIPTION	DIM 'X'	MAT'L	UL	SP
00010	R13-2-HB	Ø.093	NOTE 1	X	X
00020	R13-2-THB	Ø.093	NOTE 2	X	X
00024	R13-063-THB	Ø.063	NOTE 2	X	X
00025	R13-063-HB	Ø.063	NOTE 1	X	X
00030	R13-4-HB	Ø.119	NOTE 1	X	X
00040	R13-4-THB	Ø.119	NOTE 2	X	X
00042	R13-125-HB	Ø.125	NOTE 1	X	
00045	R13-125-THB	Ø.125	NOTE 2	X	
00050	R13-6-HB	Ø.145	NOTE 1	X	X
00052	R13-161-HB	Ø.161	NOTE 1		
00053	R13-161-THB	Ø.161	NOTE 2		
00060	R13-6-THB	Ø.145	NOTE 2	X	X

Rev.	Description of Change/ SCN#	Date
1	SCN# 102057 SCJ ORIG.ENG.DWG.DATE: 4-30-91	11-4-02
2	LISTED "ALL" P/C'S SCN# 140162 SCJ	6-14-07
3	SCN# 140249 SCJ	11-6-07



SCALE: 2=1  
DIRECTION EXITING TOOL,  
EARS UP, CARRIER TO THE FRONT.



DIRECTION TOWARD APPLICATOR,  
EARS UP, CARRIER TO THE BACK.

# UNCONTROLLED COPY

<p>THIRD ANGLE PROJECTION TOLERANCES UNLESS OTHERWISE SPECIFIED INCHES: .XX - ±.030 .XXX - ±.015 ANGLES: ±5°</p>	<p>TOOL NO. <b>0003</b></p>	<p>Title: <b>RING TERMINAL</b></p>		
		<p>DO NOT SCALE DWG.</p>	<p>Drawn By: S.JOHNSON</p>	<p>Date: 11-4-02</p>
<p>ETCO Incorporated Engineered Products 25 Bellows Street Warwick, RI 02888 Phone: (401) 467-2400 Fax: (401) 467-9230 www.ETCO.com</p>		<p>Chk'd/App'd By:</p>	<p>Scale: 10X</p>	<p>Size: <b>B</b></p>
		<p>Dwg. No.: <b>R13 cust</b></p>		