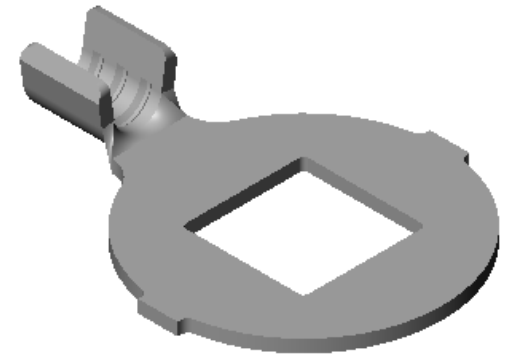
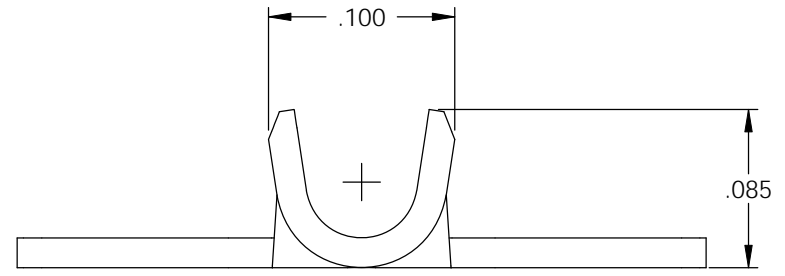
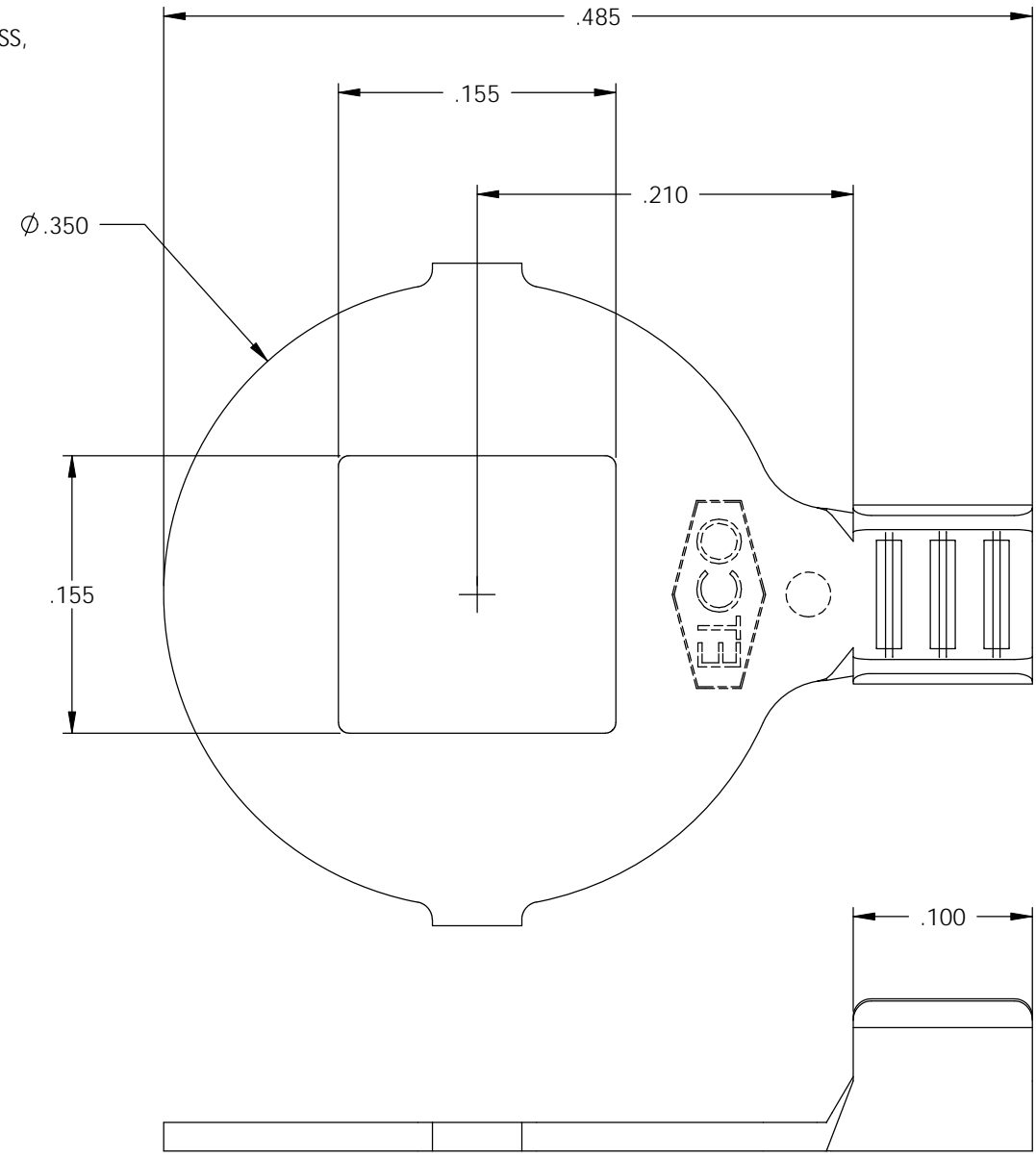


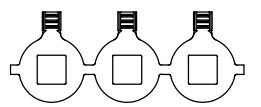
NOTE:

- 1.) MAT'L: .016 THK., BRASS, #4 TEMPER (FULL HARD), PER ETCO METAL CODE NO. 05019.
- 2.) MAT'L: .016 THK., PRE-TINNED BRASS, #4 TEMPER (FULL HARD), PER ETCO METAL CODE NO. 05211.
- 3.) MAT'L: .016 THK., PRE-TINNED RICH LOW BRASS, #4 TEMPER (FULL HARD), PER ETCO METAL CODE NO. 02415.
- 4.) PARTS MAY BE COATED WITH A LIGHT FILM OF LUBRICATION USED IN THE MANUFACTURING PROCESS.
- 5.) WIRE RANGE: 24-20 AWG.

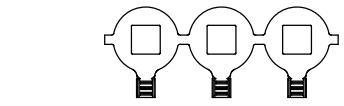
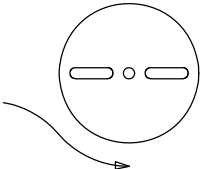


P/C	DESCRIPTION	MAT'L
00637	R132-5/32-SQ-THB	NOTE 2
00644	R132-5/32-SQ-TRL	NOTE 3

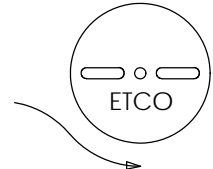
Rev.	Description of Change/ SCN#	Date
1	REDRAWN ON SOLIDWORKS NO CHANGES SCJ ORG.ENG.DWG.DATE: 5-14-93	12-3-02
2	ADDED P/Cs SCN#140162 SCJ	8-20-07



DIRECTION EXITING TOOL,  
EARS UP, TO THE BACK



DIRECTION TOWARD APPLICATOR,  
EARS UP, TO THE FRONT



# UNCONTROLLED COPY

<p>THIRD ANGLE PROJECTION TOLERANCES UNLESS OTHERWISE SPECIFIED INCHES: .XX - ±.030 .XXX - ±.015 ANGLES: ±5°</p>	<p>TOOL NO. <b>0020</b></p>	<p>Title: RING TERMINAL WITH SQUARE HOLE</p>		
		<p>DO NOT SCALE DWG.</p>	<p>Drawn By: S.JOHNSON</p>	<p>Date: 12-3-02</p>
<p>ETCO Incorporated Engineered Products 25 Bellows Street Warwick, RI 02888 Phone: (401) 467-2400 Fax: (401) 467-9230 www.ETCO.com</p>		<p>Chk'd/App'd By:</p>	<p>Scale: 10X</p>	<p>Size B</p>
		<p>Dwg. No.: R132-SQ cust</p>		