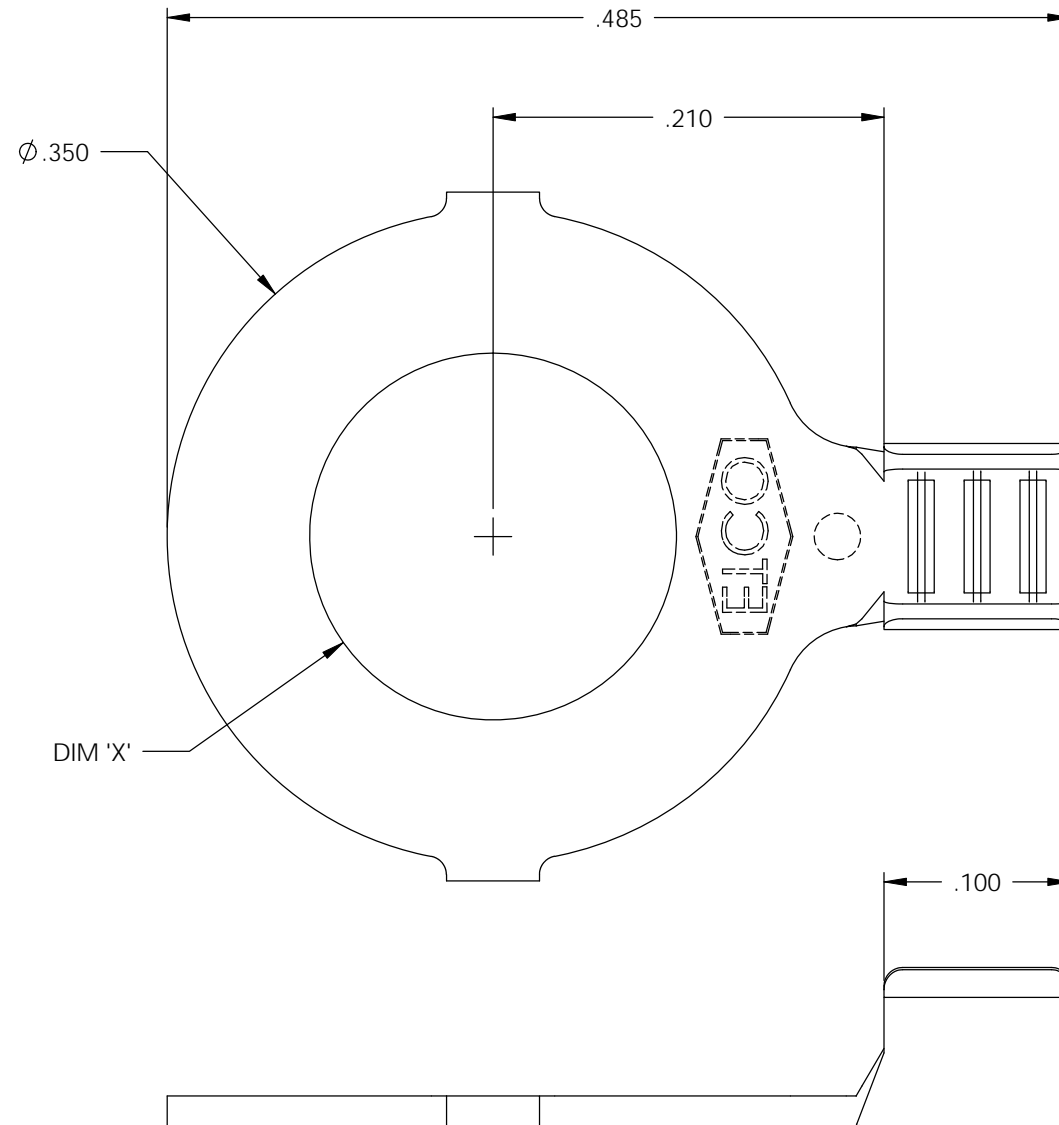
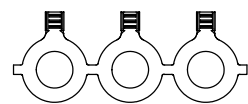
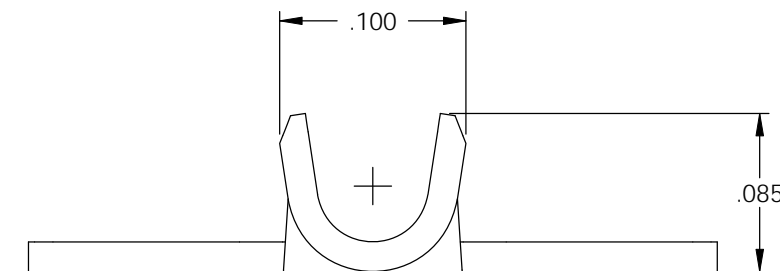


- NOTE:
- 1.) MAT'L: .016 THK., BRASS, #4 TEMPER (FULL HARD), PER ETCO METAL CODE NO. 05019.
  - 2.) MAT'L: .016 THK., PRE-TINNED BRASS, #4 TEMPER (FULL HARD), PER ETCO METAL CODE NO. 05211.
  - 3.) MAT'L: .016 THK., PRE-TINNED RICH LOW BRASS, #4 TEMPER (FULL HARD), PER ETCO METAL CODE NO. 02410.
  - 4.) MAT'L: .016 THK., PRE-TINNED STEEL, #4 TEMPER (QUARTER HARD), PER ETCO METAL CODE NO. 03011.
  - 5.) PARTS MAY BE COATED WITH A LIGHT FILM OF LUBRICATION USED IN THE MANUFACTURING PROCESS.
  - 6.) WIRE RANGE: 24-20 AWG.

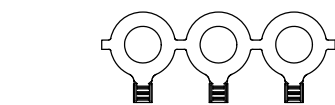
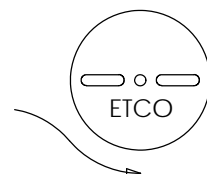
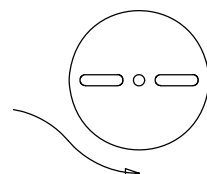


P/C	DESCRIPTION	DIM 'X'	MAT'L	UL	CSA
00638	R132-4-HB	Ø.119	NOTE 1	X	X
00639	R132-4-THB	Ø.119	NOTE 2	X	X
00641	R132-10-TRL	Ø.197	NOTE 3	X	X
00645	R132-115-TRL	Ø.115	NOTE 3		
00647	R132-10-TS	Ø.197	NOTE 4		
00648	R132-10-HB	Ø.197	NOTE 1	X	X
00649	R132-10-THB	Ø.197	NOTE 2	X	X
00655	R132-115-THB	Ø.115	NOTE 2		

Rev.	Description of Change/ SCN#	Date
1	REDRAWN ON SOLIDWORKS NO CHANGES SCJ ORG.ENG.DWG.DATE: 5-14-93	12-3-02
2	ADDED P/Cs SCN#140162 SCJ	8-20-07
3	UPDATED UL/CSA FOR 00641 SCJ	10-16-07



DIRECTION EXITING TOOL,  
EARS UP, TO THE BACK



DIRECTION TOWARD APPLICATOR,  
EARS UP, TO THE FRONT

THIS PRINT IS THE PROPERTY OF ETCO INCORPORATED. NO PART OF THIS DESIGN MAY BE USED IN ANY WAY WITHOUT WRITTEN CONSENT FROM ETCO INCORPORATED.

## UNCONTROLLED COPY

 THIRD ANGLE PROJECTION TOLERANCES UNLESS OTHERWISE SPECIFIED INCHES: .XX - ±.030 .XXX - ±.015 ANGLES: ±5°	TOOL NO. <b>0020</b>	Title: <b>RING TERMINAL</b>		
		DO NOT SCALE DWG.	Drawn By: S.JOHNSON	Date: 12-3-02
ETCO Incorporated Engineered Products 25 Bellows Street Warwick, RI 02888 Phone: (401) 467-2400 Fax: (401) 467-9230 www.ETCO.com		Chk'd/App'd By:	Scale: 4X	Size B
		Dwg. No.: <b>R132 cust</b>		