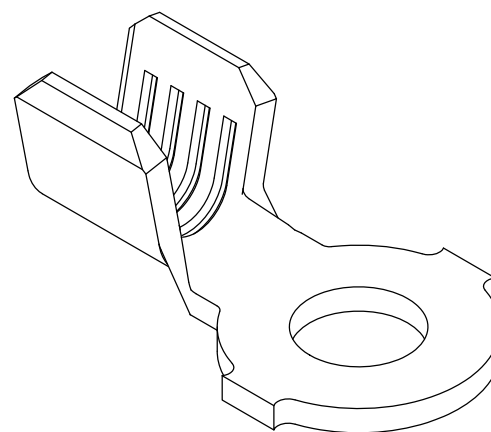
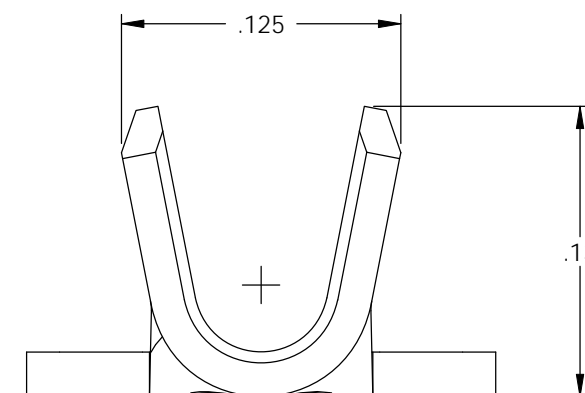
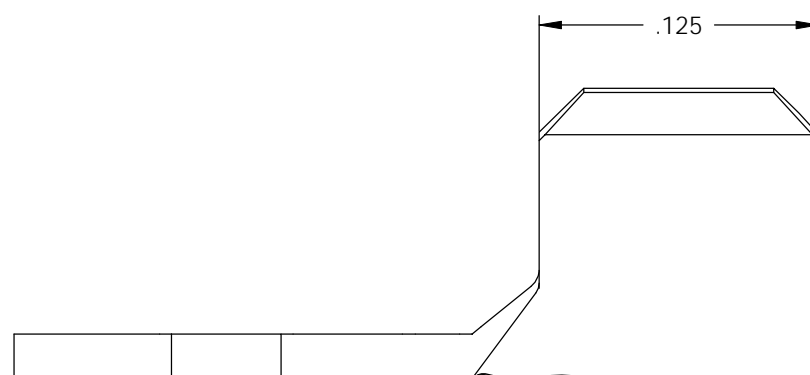
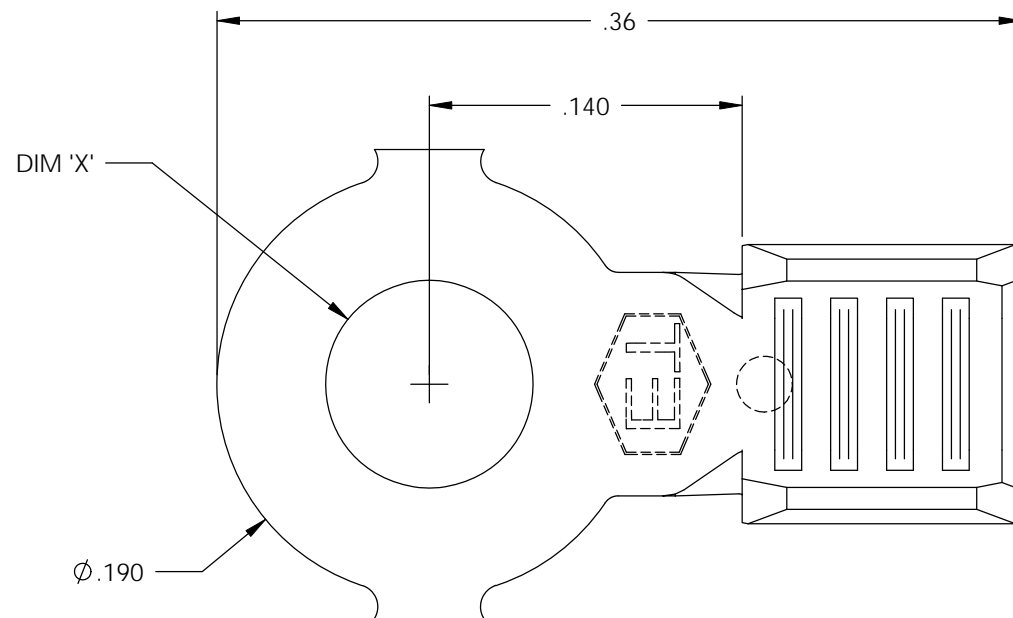


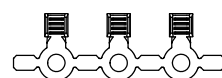
NOTE:

- 1.) MAT'L: .020 THK., BRASS, #2 TEMPER (HALF HARD), PER ETCO METAL CODE NO. 00245.
- 2.) MAT'L: .020 THK., PRE-TINNED BRASS, #2 TEMPER (HALF HARD), PER ETCO METAL CODE NO. 01310.
- 3.) MAT'L: .020 THK., PRE-NICKEL PLATED STEEL, #3 TEMPER (QUARTER HARD), PER ETCO METAL CODE NO. 03180.
- 4.) PARTS MAY BE COATED WITH A LIGHT FILM OF LUBRICATION USED IN THE MANUFACTURING PROCESS.
- 5.) WIRE RANGE: 20-16 AWG.

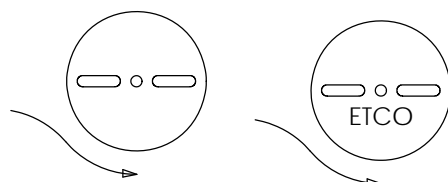


Rev.	Description of Change/ SCN#	Date
1	REDRAWN ON SOLIDWORKS NO CHANGES SCJ ORIG. ENG. DWG DATE:10-17-91	11-26-02
2	SCN# 102439 SCJ	2-6-04
3	COMPLETED P/C LIST SCJ	7-26-08

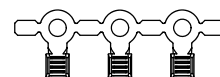
P/C	DESCRIPTION	DIM 'X'	MAT'L	UL	SR
00187	R17-066-NPS	Ø.066	NOTE 3		
00189	R17-066-HB	Ø.066	NOTE 1		
00190	R17-2-HB	Ø.093	NOTE 1	X	X
00200	R17-2-THB	Ø.093	NOTE 2	X	X
00205	R17-2-NPS	Ø.093	NOTE 3		
00210	R17-4-HB	Ø.119	NOTE 1	X	X
00211	R17-4-THB	Ø.119	NOTE 2	X	X
00221	R17-4-NPS	Ø.119	NOTE 3		
00222	R17-125-HB	Ø.125	NOTE 1	X	
00223	R17-125-THB	Ø.125	NOTE 2	X	



DIRECTION EXITING TOOL,
EARS UP, TO THE BACK



DIRECTION TOWARD APPLICATOR,
EARS UP, TO THE FRONT



UNCONTROLLED COPY

<p>THIRD ANGLE PROJECTION TOLERANCES UNLESS OTHERWISE SPECIFIED INCHES: .XX - ±.030 .XXX - ±.015 ANGLES: ±5°</p>	<p>TOOL NO. 0758</p>	<p>Title: RING TERMINAL</p>		
		<p>DO NOT SCALE DWG.</p>	<p>Drawn By: S.JOHNSON</p>	<p>Date: 11-26-02</p>
<p>ETCO Incorporated Engineered Products 25 Bellows Street Warwick, RI 02888 Phone: (401) 467-2400 Fax: (401) 467-9230 www.ETCO.com</p>		<p>Chk'd/App'd By:</p>	<p>Scale: 10X</p>	<p>Size B</p>
		<p>Dwg. No.: R17 cust</p>		