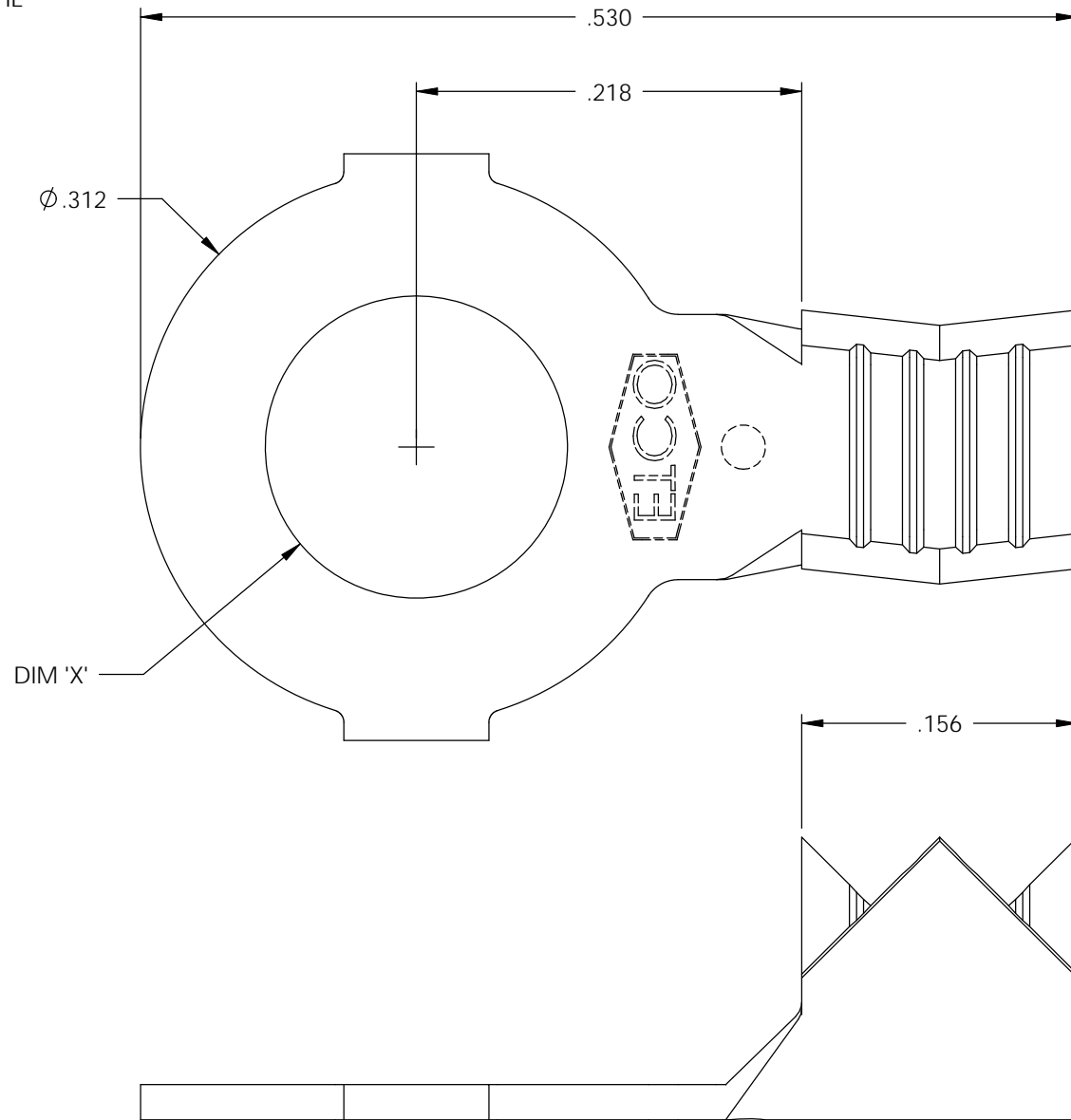


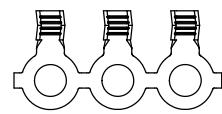
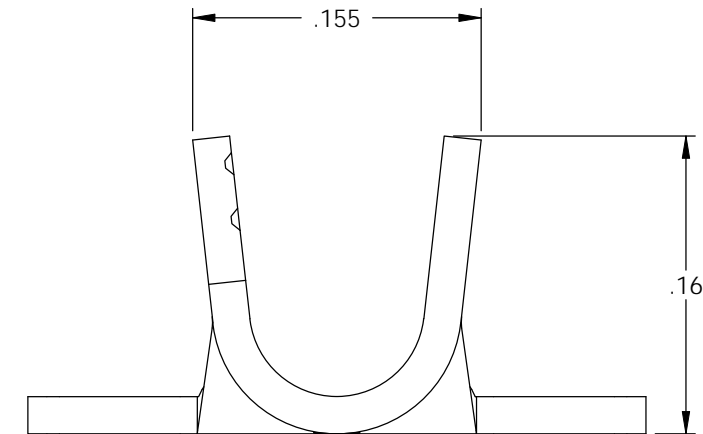
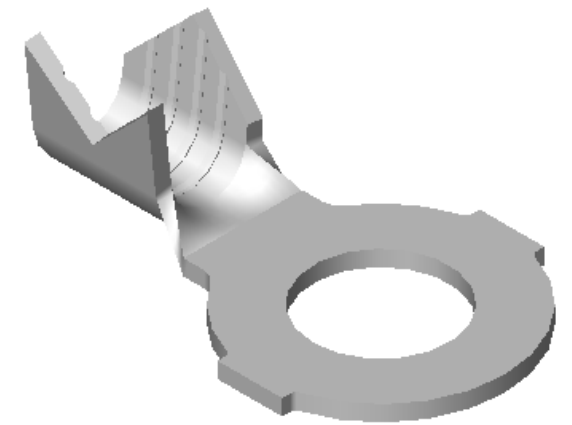
NOTE:

- 1.) MAT'L: .020 THK., BRASS, #2 TEMPER (HALF HARD), PER ETCO METAL CODE NO. 00310.
- 2.) MAT'L: .020 THK., PRE-TINNED BRASS, #2 TEMPER (HALF HARD), PER ETCO METAL CODE NO. 01390.
- 3.) PARTS MAY BE COATED WITH A LIGHT FILM OF LUBRICATION USED IN THE MANUFACTURING PROCESS.
- 4.) WIRE RANGE: 20-14 AWG.

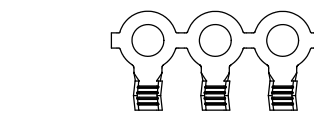
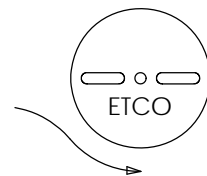
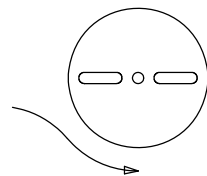


P/C	DESCRIPTION	DIM 'X'	MAT'L	UL	SP
00650	R170-4-HB	$\phi .119$	NOTE 1	X	X
00651	R170-4-THB	$\phi .119$	NOTE 2	X	X
00672	R170-6-HB	$\phi .145$	NOTE 1	X	X
00673	R170-6-THB	$\phi .145$	NOTE 2	X	X
00702	R170-8-HB	$\phi .171$	NOTE 1	X	X
00704	R170-8-THB	$\phi .171$	NOTE 2	X	X
00707	R170-10-HB	$\phi .197$	NOTE 1	X	X
00708	R170-10-THB	$\phi .197$	NOTE 2	X	X

Rev.	Description of Change/ SCN#	Date
1	SCN# 102087 SCJ ORG.ENG.DWG.DATE: 9-2-92	12-16-02
2	ADDED P/Cs SCN#140162 SCJ	8-1-07



DIRECTION EXITING TOOL,  
EARS UP TO THE BACK



DIRECTION TOWARD APPLICATOR,  
EARS UP, THE THE FRONT

## UNCONTROLLED COPY

<p>THIRD ANGLE PROJECTION TOLERANCES UNLESS OTHERWISE SPECIFIED INCHES: .XX - <math>\pm .030</math> .XXX - <math>\pm .015</math> ANGLES: <math>\pm 5^\circ</math></p>	TOOL NO. <b>0027</b>	Title: <b>PIERCING RING TERMINAL</b>		
		DO NOT SCALE DWG.	Drawn By: S.JOHNSON	Date: 12-16-02
ETCO Incorporated Engineered Products 25 Bellows Street Warwick, RI 02888 Phone: (401) 467-2400 Fax: (401) 467-9230 www.ETCO.com		Chk'd/App'd By:	Scale: 10X	Size B
		Dwg. No.: <b>R170 cust</b>		