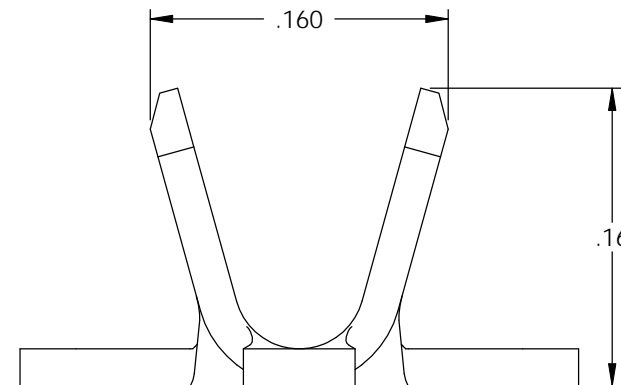
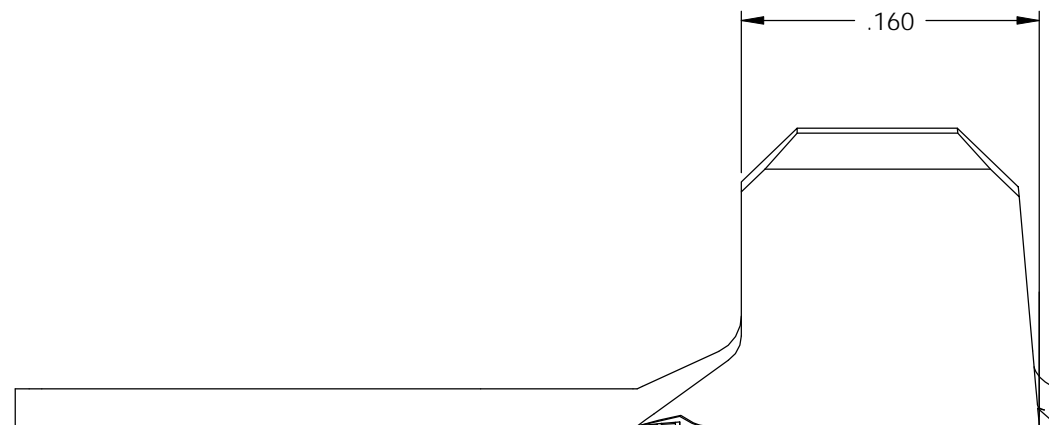
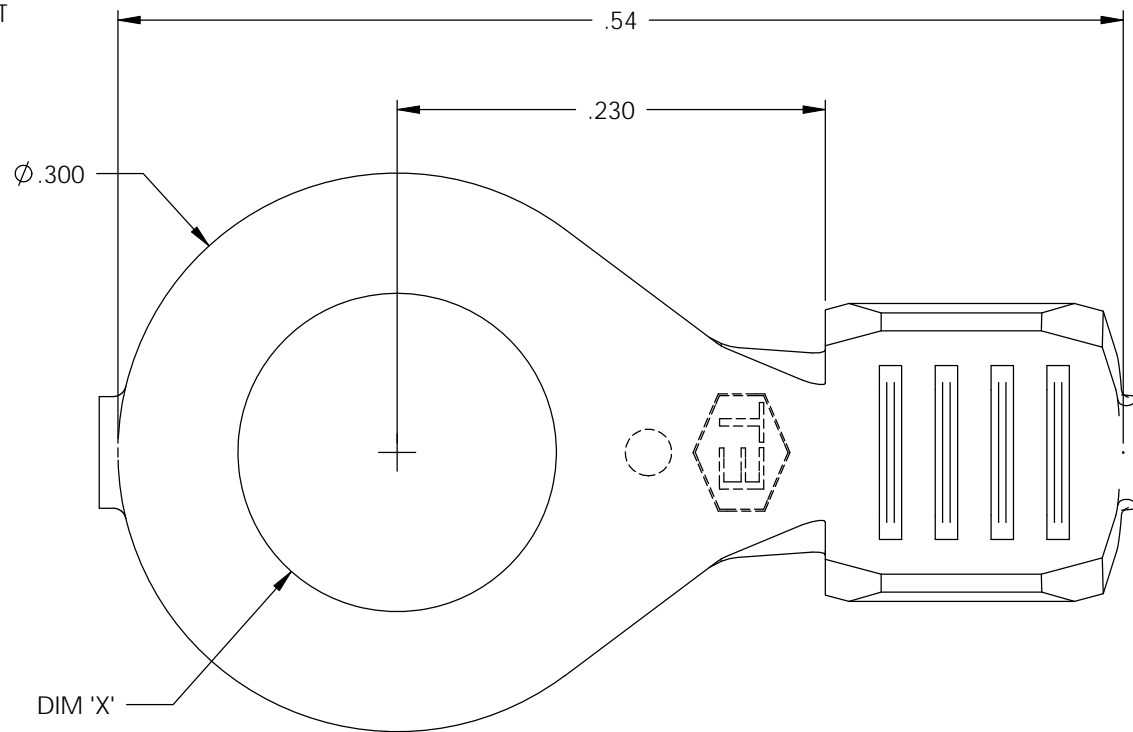


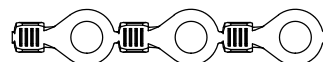
NOTE:

- 1.) MAT'L: .020 THK., BRASS, HALF HARD, ANNEALED TO TEMPER, PER ETCO METAL CODE NO. 00250.
- 2.) MAT'L: .020 THK., PRE-TINNED BRASS, HALF HARD, ANNEALED TO TEMPER, PER ETCO METAL CODE NO. 01315.
- 3.) PARTS MAY BE COATED WITH A LIGHT FILM OF LUBRICATION USED IN THE MANUFACTURING PROCESS.
- 4.) WIRE RANGE: 18-14 AWG.

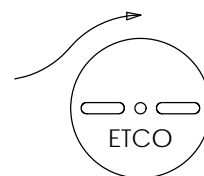
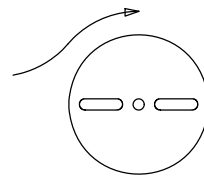


P/C	DESCRIPTION	DIM 'X'	MAT'L	UL	SP
00724	R171E-6-HB	Ø.145	NOTE 1	X	X
00725	R171E-6-THB	Ø.145	NOTE 2	X	X
00726	R171E-8-HB	Ø.171	NOTE 1		
00727	R171E-8-THB	Ø.171	NOTE 2		
00729	R171E-10-HB	Ø.197	NOTE 1	X	X
00730	R171E-10-THB	Ø.197	NOTE 2	X	X
00731	R171E-100-HB	Ø.100	NOTE 1		

Rev.	Description of Change/ SCN#	Date
1	REDRAWN ON SOLIDWORKS NO CHANGES SCJ ORG.ENG.DWG.DATE: 1-14-93	1-9-03
2	SCN# 102885 SCJ	3-9-05
3	ADDED P/C SCN#140162 SCJ	8-27-07



DIRECTION EXITING TOOL,
EARS UP, TO THE LEFT



DIRECTION TOWARD APPLICATOR,
EARS UP, TO THE RIGHT

THIS PRINT IS THE PROPERTY OF ETCO INCORPORATED. NO PART OF THIS DESIGN MAY BE USED IN ANY WAY WITHOUT WRITTEN CONSENT FROM ETCO INCORPORATED.

UNCONTROLLED COPY

<p>THIRD ANGLE PROJECTION</p>	<p>TOOL NO. 0470</p>	<p>Title: RING TERMINAL</p>		
		<p>DO NOT SCALE DWG.</p>	<p>Drawn By: S. JOHNSON</p>	<p>Date: 1-9-03</p>
<p>TOLERANCES UNLESS OTHERWISE SPECIFIED</p> <p>INCHES: .XX - ±.030 .XXX - ±.015</p> <p>ANGLES - ±5°</p>	<p>ETCO</p>	<p>ETCO Incorporated Engineered Products 25 Bellows Street Warwick, R.I. 02888 Phone: (401)467-2400 FAX: (401)467-9230 www.ETCO.com</p>	<p>Chk'd/App'd By:</p>	<p>Scale: 10:1</p>
		<p>Dwg. No.: R171E</p>	<p>Size B</p>	