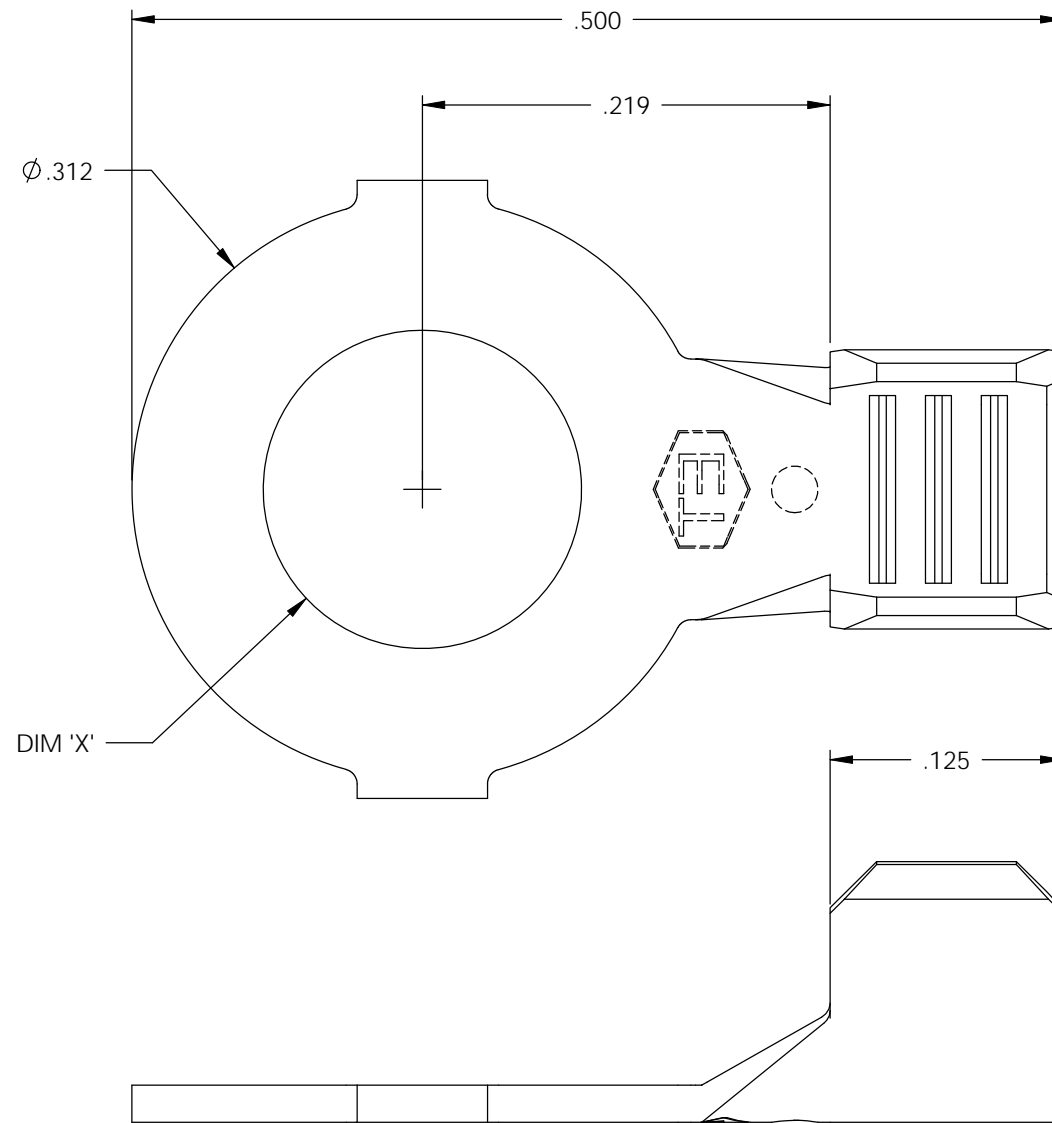


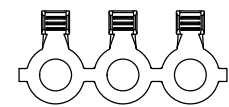
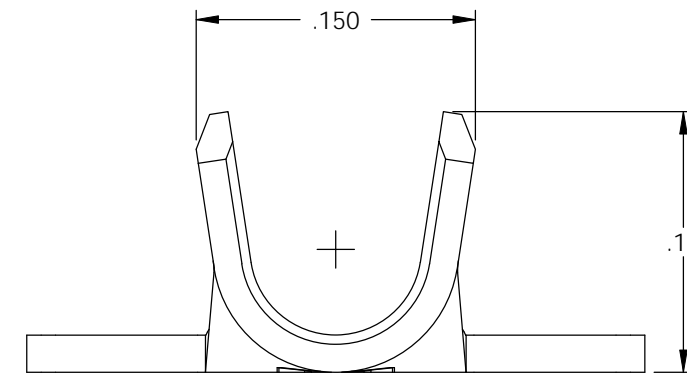
NOTE:

- 1.) MAT'L: .020 THK., BRASS, #2 TEMPER (HALF HARD), PER ETCO METAL CODE NO. 00310.
- 2.) MAT'L: .020 THK., PRE-TINNED BRASS, #2 TEMPER (HALF HARD), PER ETCO METAL CODE NO. 01390.
- 3.) MAT'L: .020 THK., PER-NICKEL PLATED STEEL, #3 TEMPER (QUARTER HARD), PER ETCO METAL CODE NO. 03220.
- 4.) PARTS MAY BE COATED WITH A THIN FILM OF LUBRICATION USED IN THE MANUFACTURING PROCESS.
- 5.) WIRE RANGE: 18-16 AWG.

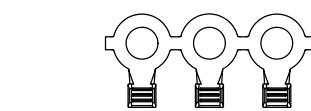
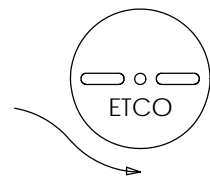
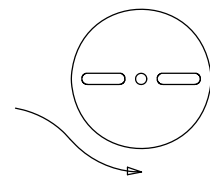


P/C	DESCRIPTION	DIM 'X'	MAT'L	UL	CS
00741	R172-4-NPS	Ø .119	NOTE 3		
00742	R172-4-HB	Ø .119	NOTE 1	X	X
00743	R172-4-THB	Ø .119	NOTE 2	X	X
00750	R172-6-HB	Ø .145	NOTE 1	X	X
00760	R172-6-THB	Ø .145	NOTE 2	X	X
00765	R172-6-NPS	Ø .145	NOTE 3		
00770	R172-8-HB	Ø .171	NOTE 1	X	X
00780	R172-8-THB	Ø .171	NOTE 2	X	X
00790	R172-10-HB	Ø .197	NOTE 1	X	X
00800	R172-10-THB	Ø .197	NOTE 2	X	X

Rev.	Description of Change/ SCN#	Date
1	REDRAWN ON SOLIDWORKS NO CHANGES SCJ ORG.ENG.DWG.DATE: 2-22-93	12-12-02
2	ADDED P/Cs SCN#140162 SCJ	8-20-07



DIRECTION EXITING TOOL,
EARS UP, TO THE BACK



DIRECTION TOWARD APPLICATOR,
EARS UP, TO THE FRONT

UNCONTROLLED COPY

<p>THIRD ANGLE PROJECTION TOLERANCES UNLESS OTHERWISE SPECIFIED INCHES: .XX - ±.030 .XXX - ±.015 ANGLES: ±5°</p>	TOOL NO. 0022	Title: RING TERMINAL		
	<p>ETCO</p>	DO NOT SCALE DWG.	Drawn By: S.JOHNSON	Date: 12-12-02
ETCO Incorporated Engineered Products 25 Bellows Street Warwick, RI 02888 Phone: (401) 467-2400 Fax: (401) 467-9230 www.ETCO.com		Chk'd/App'd By:	Scale: 10X	Size B
		Dwg. No.: R172 cust		