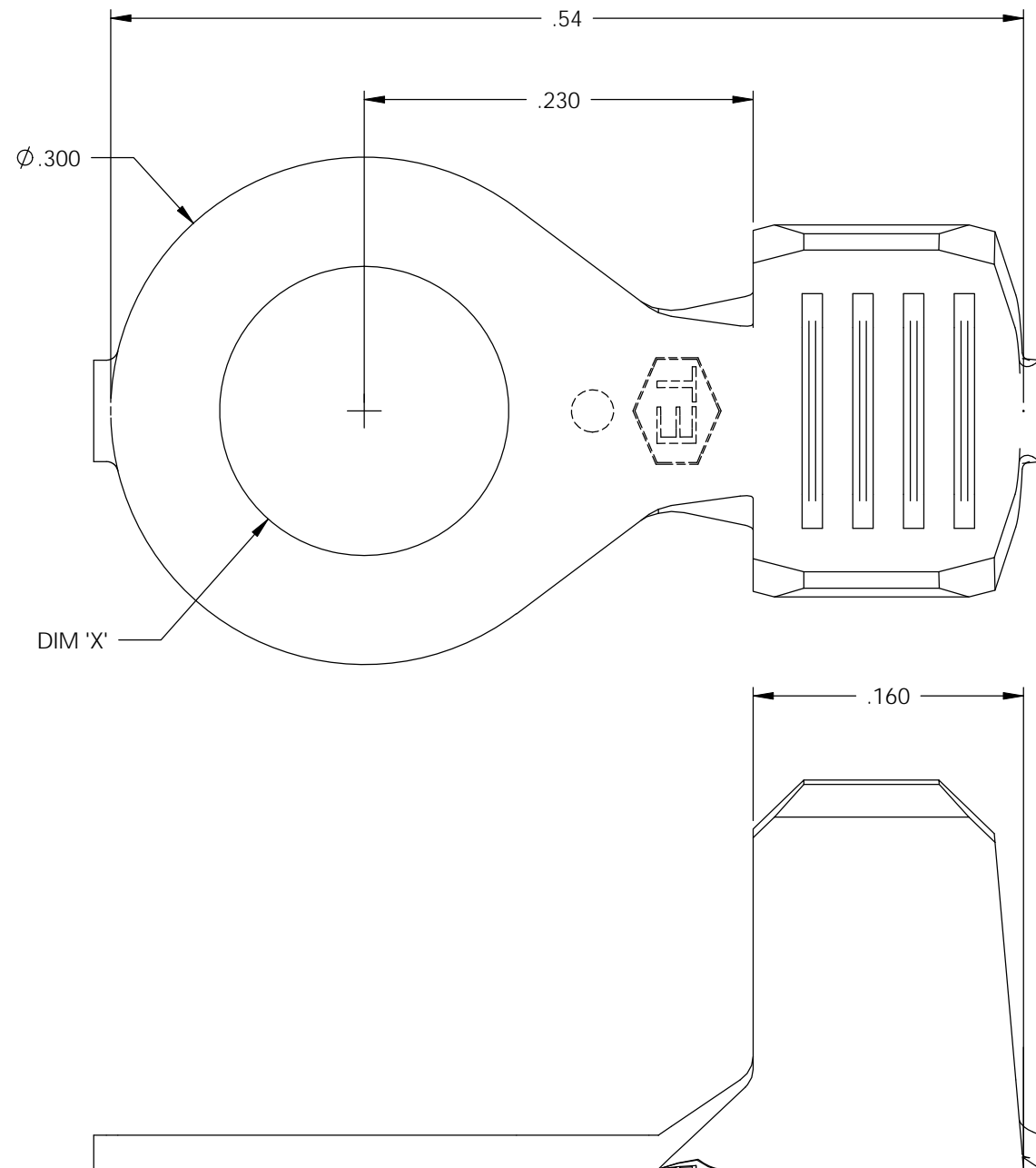


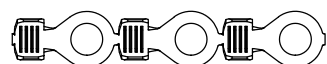
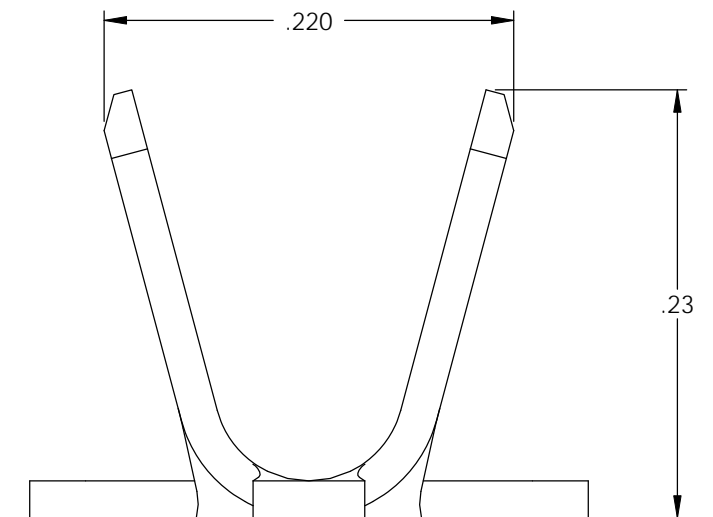
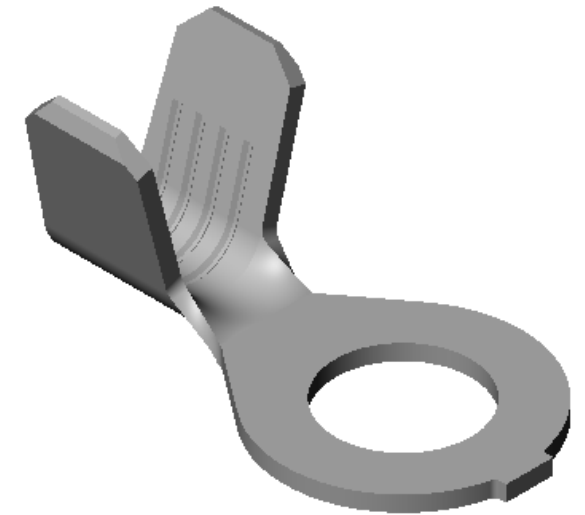
NOTE:

- 1.) MAT'L: .020 THK., BRASS, #2 TEMPER (HALF HARD), PER ETCO METAL CODE NO. 00313.
- 2.) MAT'L: .020 THK., PRE-TINNED BRASS, #2 TEMPER (HALF HARD), PER ETCO METAL CODE NO. 01395.
- 3.) PARTS MAY BE COATED WITH A LIGHT FILM OF LUBRICATION USED IN THE MANUFACTURING PROCESS.
- 4.) WIRE RANGE: 12-10 AWG.

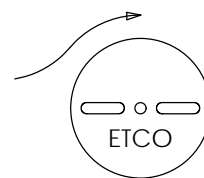
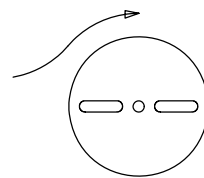


P/C	DESCRIPTION	DIM 'X'	MAT'L
00831	R174E-100-HB	$\phi .100$	NOTE 1
00832	R174E-100-THB	$\phi .100$	NOTE 2
00833	R174E-6-HB	$\phi .145$	NOTE 1
00834	R174E-6-THB	$\phi .145$	NOTE 2
00835	R174E-8-HB	$\phi .171$	NOTE 1
00836	R174E-8-THB	$\phi .171$	NOTE 2
00837	R174E-10-HB	$\phi .197$	NOTE 1
00838	R174E-10-THB	$\phi .197$	NOTE 2

Rev.	Description of Change/ SCN#	Date
1	REDRAWN ON SOLIDWORKS NO CHANGES SCJ ORG.ENG.DWG.DATE: 1-14-93	1-9-03
2	ADDED P/Cs SCN#140162 SCJ	8-24-07



DIRECTION EXITING TOOL,
EARS UP, TO THE LEFT



DIRECTION TOWARD APPLICATOR,
EARS UP, TO THE RIGHT

THIS PRINT IS THE PROPERTY OF ETCO INCORPORATED. NO PART OF THIS DESIGN MAY BE USED IN ANY WAY WITHOUT WRITTEN CONSENT FROM ETCO INCORPORATED.

UNCONTROLLED COPY

THIRD ANGLE PROJECTION		TOOL NO.	Title:		
		0470	RING TERMINAL		
TOLERANCES UNLESS OTHERWISE SPECIFIED INCHES: .XX - $\pm .030$.XXX - $\pm .015$ ANGLES: $\pm 5^\circ$		DO NOT SCALE DWG.		Drawn By: S.JOHNSON	Date: 1-9-03
		ETCO Incorporated Engineered Products 25 Bellows Street Warwick, RI 02888 Phone: (401) 467-2400 Fax: (401) 467-9230 www.ETCO.com		Chk'd/App'd By:	Scale: 10X Size B
				Dwg. No.:	R174E cust