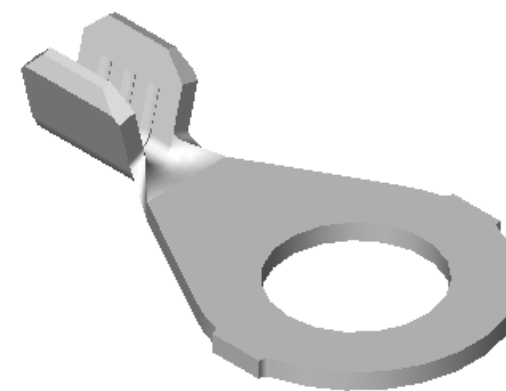
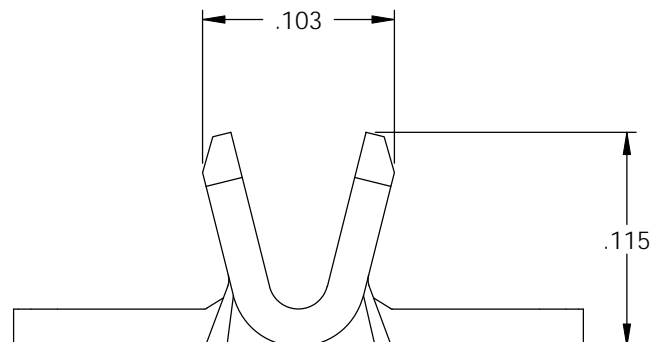
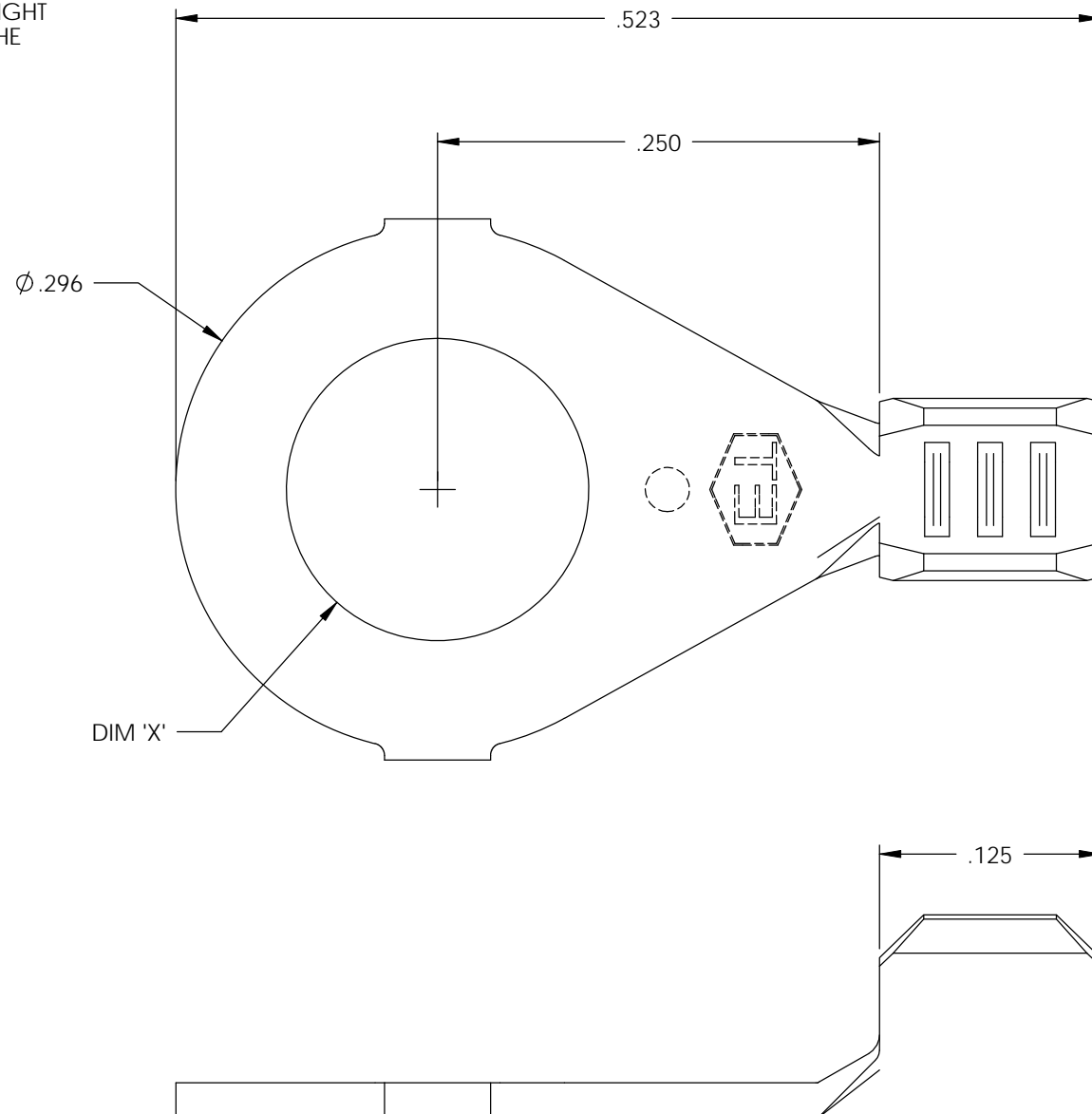


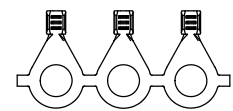
NOTE:

- 1.) MAT'L: .020 THK., BRASS, #2 TEMPER (HALF HARD), PER ETCO METAL CODE NO. 00310.
- 2.) MAT'L: .020 THK., PRE-TINNED BRASS, #2 TEMPER (HALF HARD), PER ETCO METAL CODE NO. 01390.
- 3.) MAT'L: .020 THK., COPPER, #1 TEMPER (QUARTER HARD), PER ETCO METAL CODE NO. 03308.
- 4.) PARTS MAY BE COATED WITH A LIGHT FILM OF LUBRICATION USED IN THE MANUFACTURING PROCESS.
- 5.) WIRE RANGE: 22-20 AWG.

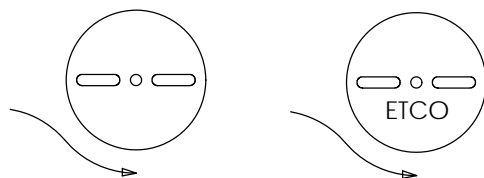


P/C	DESCRIPTION	DIM 'X'	MAT'L	UL	SA
00890	R175-6-HB	Ø.145	NOTE 1	X	X
00900	R175-6-THB	Ø.145	NOTE 2	X	X
00919	R175-8-HB	Ø.171	NOTE 1	X	X
00920	R175-8-THB	Ø.171	NOTE 2	X	X
00930	R175-10-HB	Ø.197	NOTE 1	X	X
00940	R175-10-THB	Ø.197	NOTE 2	X	X
00942	R175-10-COPPER	Ø.197	NOTE 4		

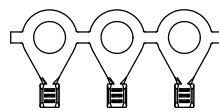
Rev.	Description of Change/ SCN#	Date
2	REDRAWN ON SOLIDWORKS NO CHANGES SCJ ORG.ENG.DWG.DATE: 3-17-93	12-12-02
3	SCN# 140052 SCJ	8-31-06
4	SCN#140229 SCJ	8-28-07



DIRECTION EXITING TOOL,
EARS UP, TO THE BACK



DIRECTION TOWARD APPLICATOR,
EARS UP, TO THE FRONT



UNCONTROLLED COPY

<p>THIRD ANGLE PROJECTION TOLERANCES UNLESS OTHERWISE SPECIFIED INCHES: .XX - ±.030 .XXX - ±.015 ANGLES: ±5°</p>	TOOL NO. 0024	Title: RING TERMINAL		
		DO NOT SCALE DWG.	Drawn By: S.JOHNSON	Date: 12-11-02
ETCO Incorporated Engineered Products 25 Bellows Street Warwick, RI 02888 Phone: (401) 467-2400 Fax: (401) 467-9230 www.ETCO.com		Chk'd/App'd By:	Scale: 10X	Size B
		Dwg. No.: R175 cust		