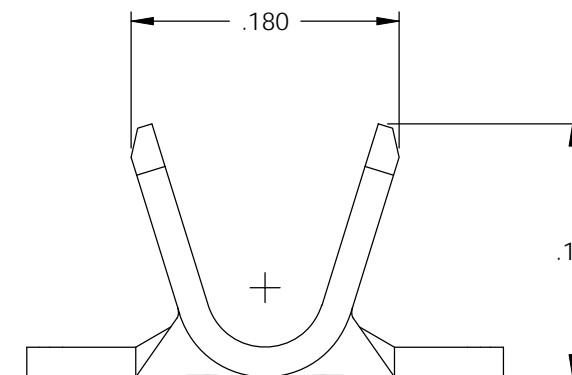
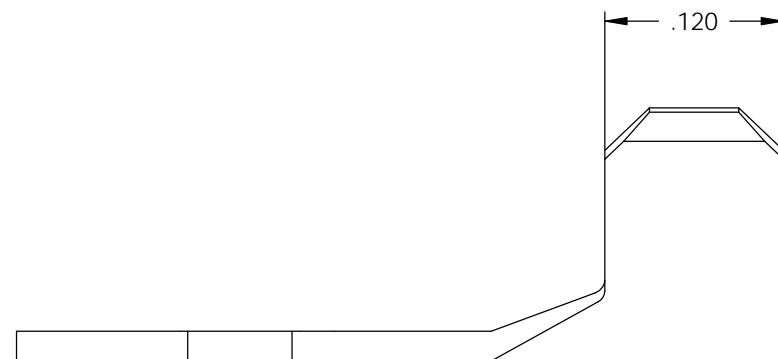
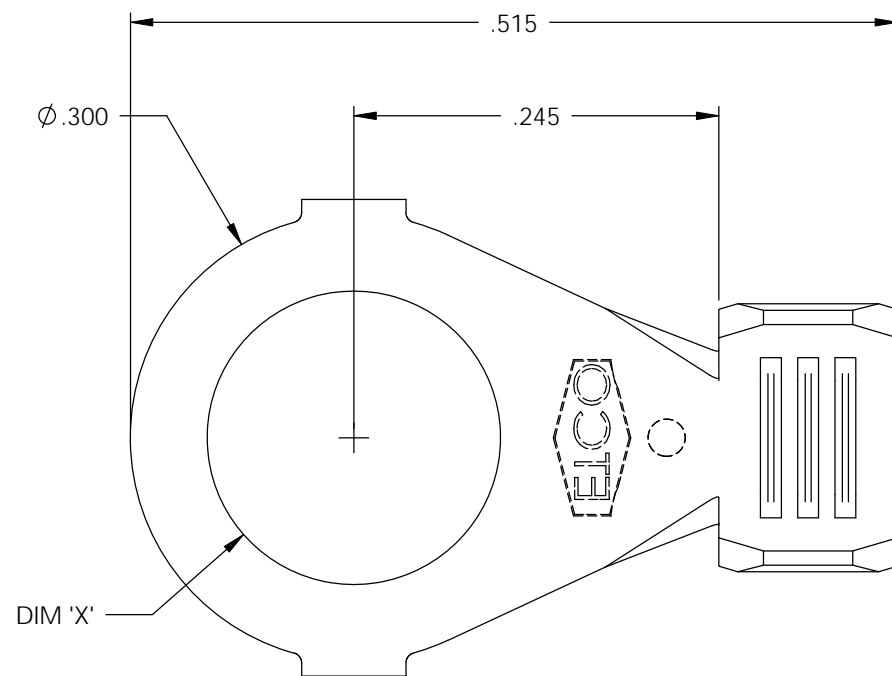


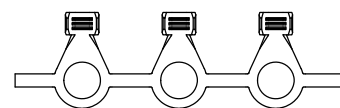
NOTE:

- 1.) MAT'L: .020 THK., BRASS, #2 TEMPER (HALF HARD), PER ETCO METAL CODE NO. 00310.
- 2.) MAT'L: .020 THK., PRE-TINNED BRASS, #2 TEMPER (HALF HARD), PER ETCO METAL CODE NO. 01390.
- 3.) PARTS MAY BE COATED WITH A LIGHT FILM OF LUBRICATION USED IN THE MANUFACTURING PROCESS.
- 4.) WIRE RANGE: 16-14 AWG.

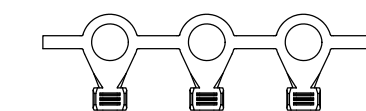
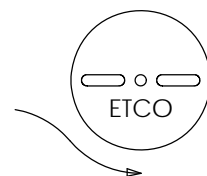
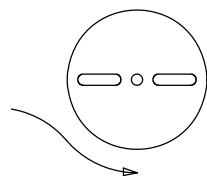


P/C	DESCRIPTION	MAT'L	DIM 'X'	UL	SP
01170	R178-4-HB	NOTE 1	Ø.119	X	X
01171	R178-4-THB	NOTE 2	Ø.119	X	X
01190	R178-6-HB	NOTE 1	Ø.145	X	X
01200	R178-6-THB	NOTE 2	Ø.145	X	X
01210	R178-8-HB	NOTE 1	Ø.171	X	X
01220	R178-8-THB	NOTE 2	Ø.171	X	X
01239	R178-10-HB	NOTE 1	Ø.197	X	X
01240	R178-10-THB	NOTE 2	Ø.197	X	X

Rev.	Description of Change/ SCN#	Date
2	REDRAWN ON SOLIDWORK NO CHANGES SCJ ORG.ENG.DWG.DATE: 11-13-91	12-16-02
3	ADDED P/Cs SCN#140162 SCJ	8-21-07



DIRECTION EXITING TOOL, EARS UP, TO THE BACK



DIRECTION TOWARD APPLICATOR, EARS UP, TO THE FRONT

THIS PRINT IS THE PROPERTY OF ETCO INCORPORATED. NO PART OF THIS DESIGN MAY BE USED IN ANY WAY WITHOUT WRITTEN CONSENT FROM ETCO INCORPORATED.

UNCONTROLLED COPY

<p>THIRD ANGLE PROJECTION TOLERANCES UNLESS OTHERWISE SPECIFIED INCHES: .XX - ±.030 .XXX - ±.015 ANGLES: ±5°</p>	TOOL NO. 0029	Title: RING TERMINAL		
		DO NOT SCALE DWG.	Drawn By: S.JOHNSON	Date: 12-16-02
ETCO Incorporated Engineered Products 25 Bellows Street Warwick, RI 02888 Phone: (401) 467-2400 Fax: (401) 467-9230 www.ETCO.com		Chk'd/App'd By:	Scale: 8X	Size B
		Dwg. No.: R178 cust		