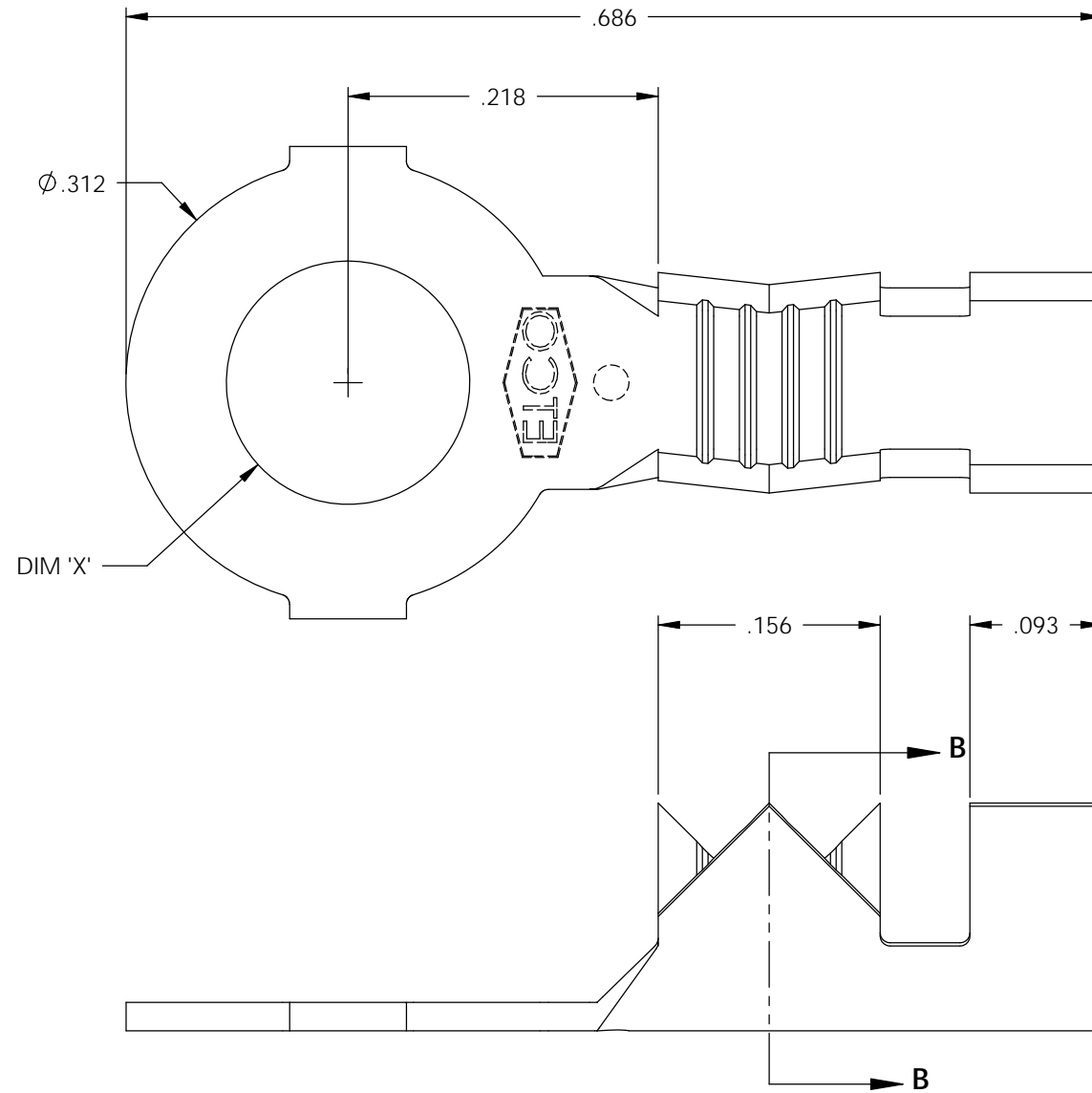


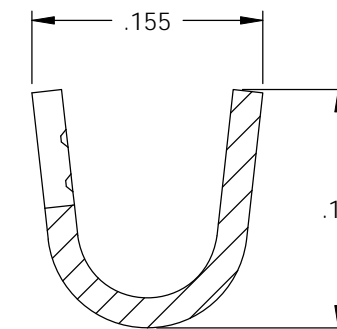
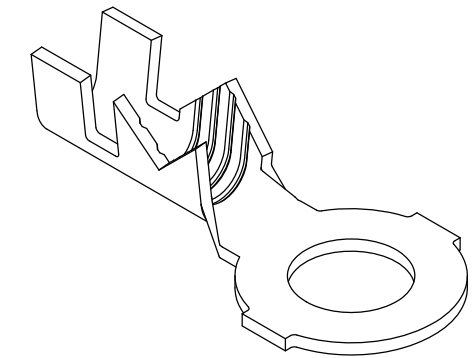
NOTE:

- 1.) MAT'L: .020 THK., BRASS, #2 TEMPER (HALF HARD), PER ETCO METAL CODE NO. 00390.
- 2.) MAT'L: .020 THK., PRE-TINNED BRASS, #2 TEMPER (HALF HARD), PER ETCO METAL CODE NO. 01450.
- 3.) PARTS MAY BE COATED WITH A LIGHT FILM OF LUBRICATION USED IN THE MANUFACTURING PROCESS.
- 4.) WIRE RANGE: 20-14 AWG.
- 5.) INSUL RANGE: ϕ .075-.110

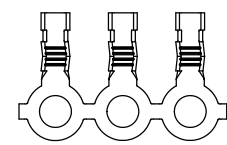
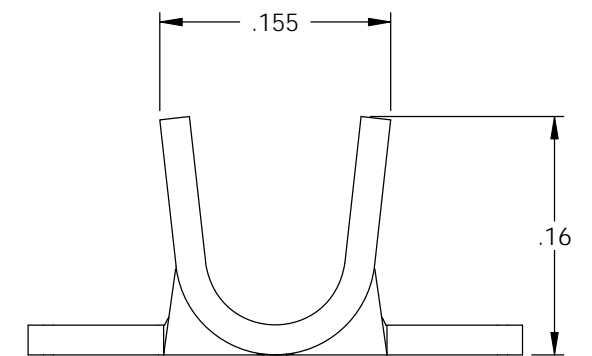


P/C	DESCRIPTION	DIM 'X'	MAT'L	UL	SP
01252	R180-4-HB	ϕ .119	NOTE 1	X	X
01262	R180-4-THB	ϕ .119	NOTE 2	X	X
01272	R180-6-HB	ϕ .145	NOTE 1	X	X
01282	R180-6-THB	ϕ .145	NOTE 2	X	X
01292	R180-8-HB	ϕ .171	NOTE 1	X	X
01302	R180-8-THB	ϕ .171	NOTE 2	X	X
01312	R180-10-HB	ϕ .197	NOTE 1	X	X
01322	R180-10-THB	ϕ .197	NOTE 2	X	X
01323	R180-12-THB	ϕ .223	NOTE 2	X	

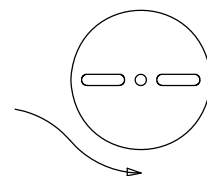
Rev.	Description of Change/ SCN#	Date
1	SCN# 102087 SCJ ORG.ENG.DWG.DATE: 9-2-92	12-16-02
2	ADDED P/Cs SCN#140162 SCJ	8-1-07
3	ECR #688 JMR	4-18-11



SECTION B-B
SCALE 8 : 1



DIRECTION EXITING TOOL,
EARS UP TO THE BACK



DIRECTION TOWARD APPLICATOR,
EARS UP, THE THE FRONT

UNCONTROLLED COPY

<p>THIRD ANGLE PROJECTION TOLERANCES UNLESS OTHERWISE SPECIFIED INCHES: .XX - \pm.030 .XXX - \pm.015 ANGLES: $\pm 5^\circ$</p>	<p>TOOL NO. 0027</p>	<p>Title: ③ RING TERMINAL</p>		
		<p>DO NOT SCALE DWG.</p>	<p>Drawn By: S.JOHNSON</p>	<p>Date: 12-16-02</p>
<p>ETCO Incorporated Engineered Products 25 Bellows Street Warwick, RI 02888 Phone: (401) 467-2400 Fax: (401) 467-9230 www.ETCO.com</p>		<p>Chk'd/App'd By:</p>	<p>Scale: 8X</p>	<p>Size: B</p>
		<p>Dwg. No.: R180 cust</p>		