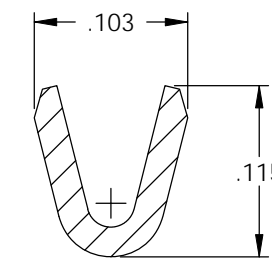
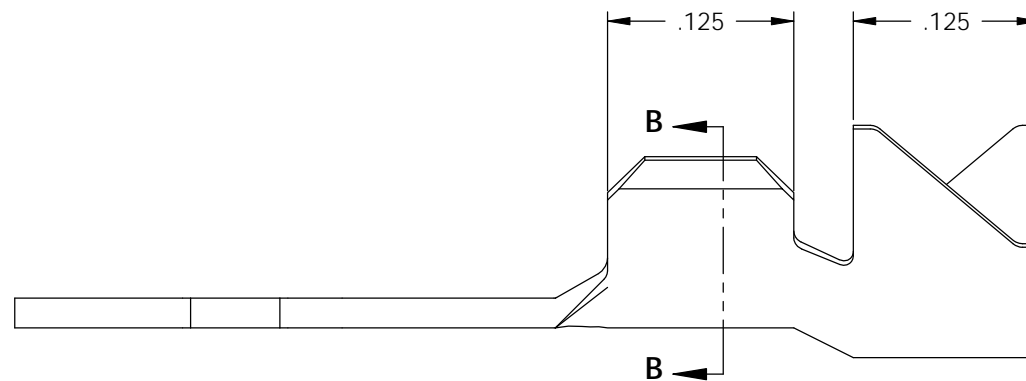
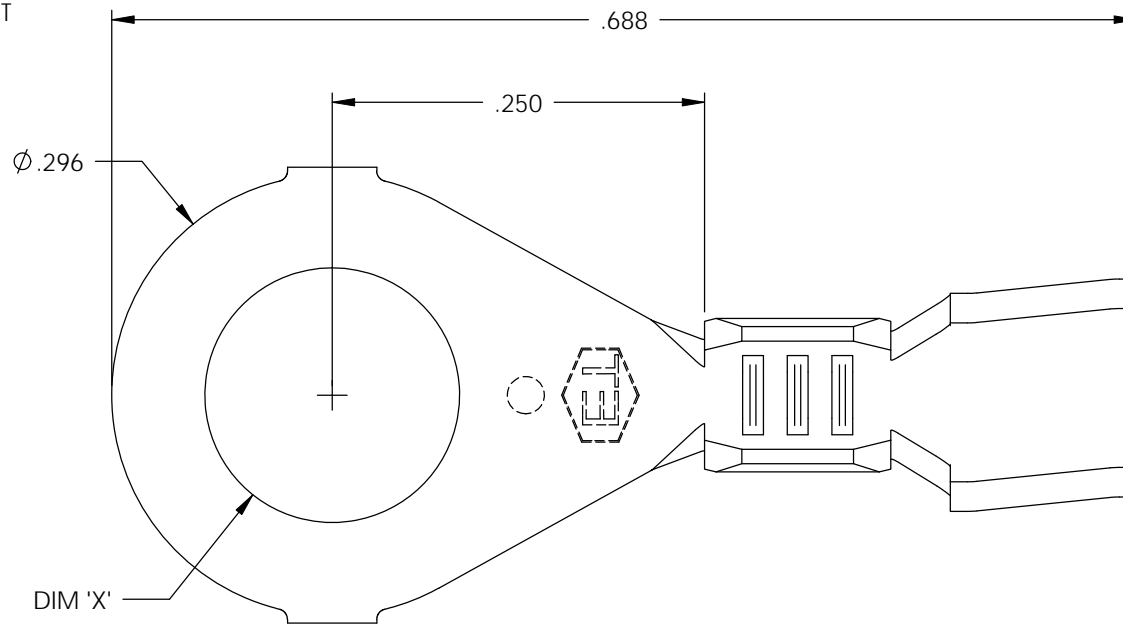
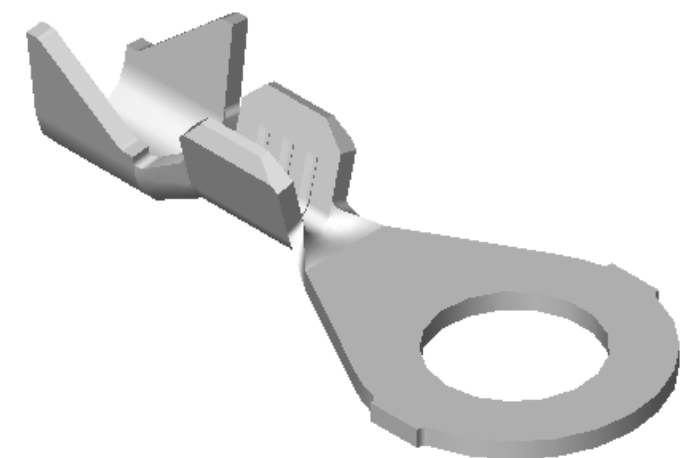
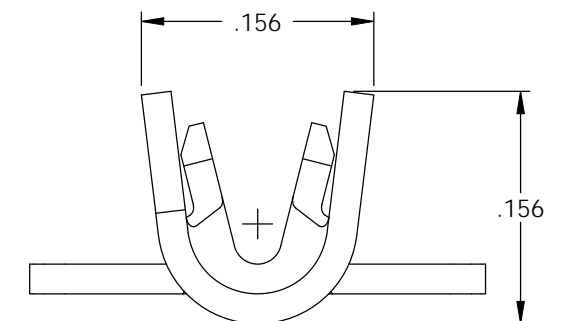


NOTE:

- 1.) MAT'L: .020 THK., BRASS, #2 TEMPER (HALF HARD), PER ETCO METAL CODE NO. 00390.
- 2.) MAT'L: .020 THK., PRE-TINNED BRASS, #2 TEMPER (HALF HARD), PER ETCO METAL CODE NO. 01450.
- 3.) MAT'L: .020 THK., PRE-NICKEL PLATED STEEL, #3 TEMPER (HALF HARD), PER ETCO METAL CODE NO. 03250.
- 4.) PARTS MAY BE COATED WITH A LIGHT FILM OF LUBRICATION USED IN THE MANUFACTURING PROCESS.
- 5.) WIRE RANGE: 22-20 AWG.
- 6.) INSUL RANGE: ϕ .087-.096

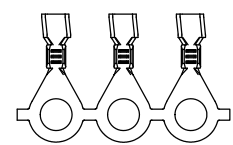


SECTION B-B
SCALE 8 : 1

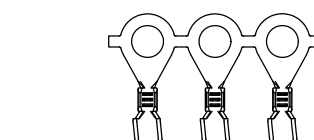
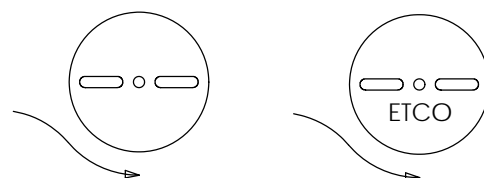


P/C	DESCRIPTION	DIM 'X'	MAT'L	UL	SP
01430	R185-6-HB	ϕ .145	NOTE 1	X	X
01442	R185-6-THB	ϕ .145	NOTE 2	X	X
01450	R185-8-HB	ϕ .171	NOTE 1	X	X
01462	R185-8-THB	ϕ .171	NOTE 2	X	X
01472	R185-10-HB	ϕ .197	NOTE 1	X	X
01475	R185-10-NPS	ϕ .197	NOTE 3		
01482	R185-10-THB	ϕ .197	NOTE 2	X	X

Rev.	Description of Change/ SCN#	Date
1	REDRAWN ON SOLIDWORKS NO CHANGES SCJ ORG.ENG.DWG.DATE: 3-17-93	12-12-02
2	ADDED P/Cs SCN#140162 SCJ	8-21-07



DIRECTION EXITING TOOL,
EARS UP, TO THE BACK



DIRECTION TOWARD APPLICATOR,
EARS UP, TO THE FRONT

UNCONTROLLED COPY

<p>THIRD ANGLE PROJECTION TOLERANCES UNLESS OTHERWISE SPECIFIED INCHES: .XX - \pm.030 .XXX - \pm.015 ANGLES: \pm5°</p>	<p>TOOL NO. 0024</p>	<p>Title: RING TERMINAL</p>		
		<p>DO NOT SCALE DWG.</p>	<p>Drawn By: S.JOHNSON</p>	<p>Date: 12-12-02</p>
<p>ETCO Incorporated Engineered Products 25 Bellows Street Warwick, RI 02888 Phone: (401) 467-2400 Fax: (401) 467-9230 www.ETCO.com</p>		<p>Chk'd/App'd By:</p>	<p>Scale: 8X</p>	<p>Size B</p>
		<p>Dwg. No.:</p>	<p>R185 cust</p>	