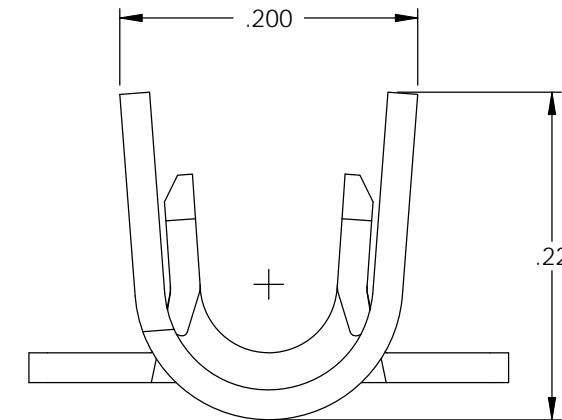
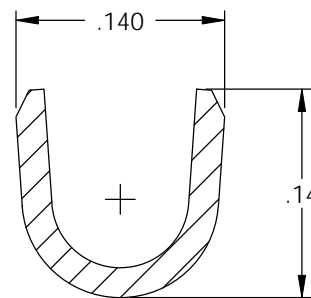
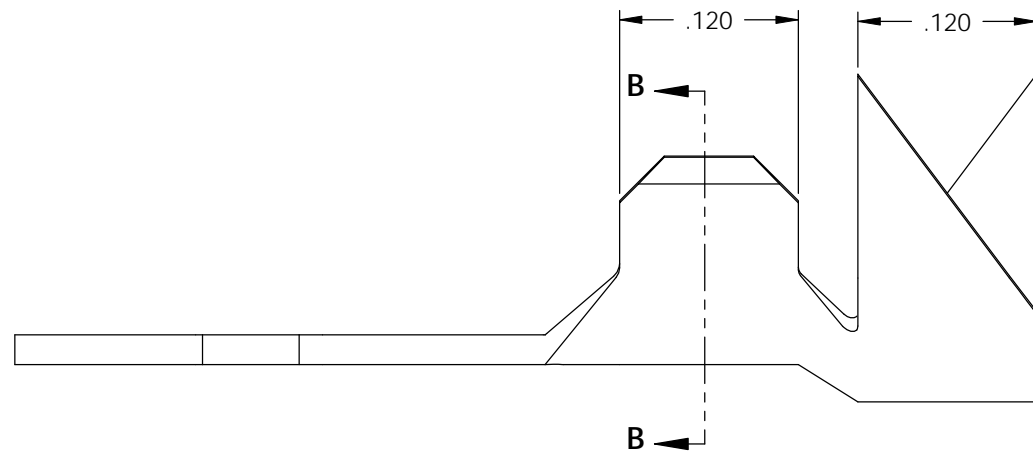
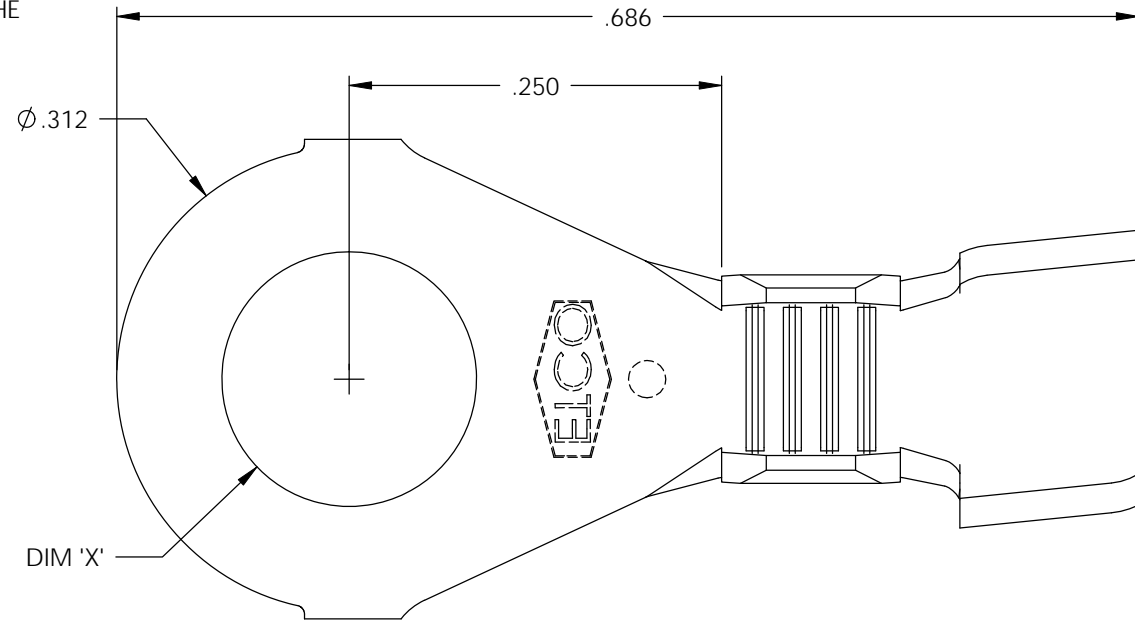


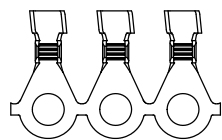
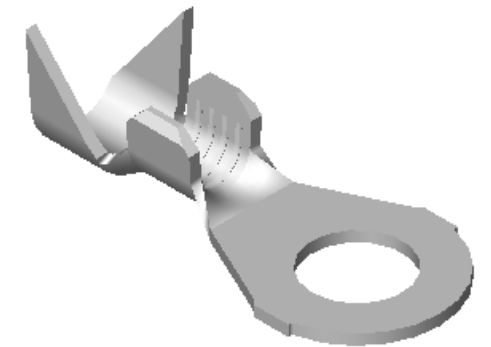
NOTE:

- 1.) MAT'L: .020 THK., BRASS, #2 TEMPER (HALF HARD), PER ETCO METAL CODE NO. 00390.
- 2.) MAT'L: .020 THK., PRE-TINNED BRASS, #2 TEMPER (HALF HARD), PER ETCO METAL CODE NO. 01450.
- 3.) MAT'L: .020 THK., PRE-NICKEL PLATED STEEL, #3 TEMPER (QUARTER HARD), PER ETCO METAL CODE NO. 03250.
- 4.) MAT'L: .020 THK., PRE-COPPER PLATED STEEL, #2 TEMPER (HALF HARD), PER ETCO METAL CODE NO. 02795.
- 5.) PARTS MAY BE COATED WITH A LIGHT FILM OF LUBRICATION USED IN THE MANUFACTURING PROCESS.
- 6.) WIRE RANGE: 20-16 AWG.
- 7.) INSUL RANGE:  $\phi$ .090-.130

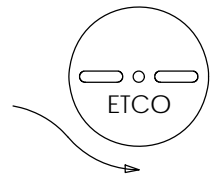
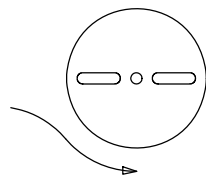


P/C	DESCRIPTION	DIM 'X'	MAT'L	UL	SP
01491	R186-4-HB	$\phi$ .119	NOTE 1	X	X
01500	R186-4-THB	$\phi$ .119	NOTE 2	X	X
01522	R186-6-HB	$\phi$ .145	NOTE 1	X	X
01523	R186-6-THB	$\phi$ .145	NOTE 2	X	X
01541	R186-8-NPS	$\phi$ .171	NOTE 3		
01542	R186-135-HB	$\phi$ .135	NOTE 1		
01549	R186-6-NPS	$\phi$ .145	NOTE 3		
01552	R186-10-HB	$\phi$ .197	NOTE 1	X	X
01560	R186-8-CPS	$\phi$ .171	NOTE 4		
01561	R186-10-NPS	$\phi$ .197	NOTE 3		
01562	R186-8-HB	$\phi$ .171	NOTE 1	X	X
01563	R186-8-THB	$\phi$ .171	NOTE 2	X	X
01564	R186-10-THB	$\phi$ .197	NOTE 2	X	X
01565	R186-12-HB	$\phi$ .223	NOTE 1		

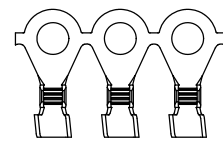
Rev.	Description of Change/ SCN#	Date
1	SCN# 102089 SCJ ORG.ENG.DWG.DATE: 10-28-92	12-16-02
2	ADDED P/Cs SCN#140162 SCJ	8-1-07



DIRECTION EXITING TOOL,  
EARS UP, THE THE BACK



DIRECTION TOWARD APPLICATOR,  
EARS UP, TO THE FRONT



# UNCONTROLLED COPY

<p>THIRD ANGLE PROJECTION TOLERANCES UNLESS OTHERWISE SPECIFIED INCHES: .XX - <math>\pm</math>.030 .XXX - <math>\pm</math>.015 ANGLES: <math>\pm</math>5°</p>	<p>TOOL NO. <b>0028</b></p>	<p>Title: <b>RING TERMINAL</b></p>		
		<p>DO NOT SCALE DWG.</p>	<p>Drawn By: S.JOHNSON</p>	<p>Date: 12-16-02</p>
<p>ETCO Incorporated Engineered Products 25 Bellows Street Warwick, RI 02888 Phone: (401) 467-2400 Fax: (401) 467-9230 www.ETCO.com</p>		<p>Chk'd/App'd By:</p>	<p>Scale: 8X</p>	<p>Size B</p>
		<p>Dwg. No.: <b>R186 cust</b></p>		